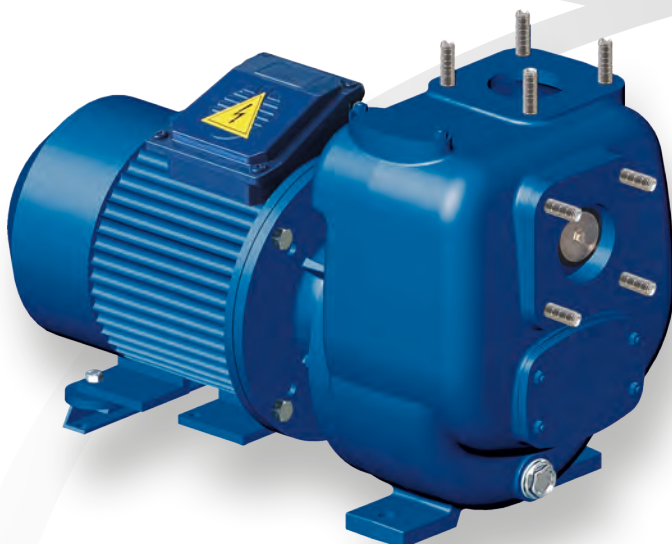


SELF-PRIMING CENTRIFUGAL ELECTRIC PUMPS

RB316

ROBUSTA
Hydraulic System

VIESSE 
POMPE • ITALIA



The self-priming centrifugal pumps "Robusta" are designed to comply to the hardest and heavy duty applications, such as: building, emergency and industrial sectors. The open-blade double-curvature impeller, unique across the world, ensures a superior priming ability voiding the need of a foot valve installation. The high thickness of the pump body and of the impeller blades, allow the handling of more abrasive fluids and large passage of solids.

FEATURES

- ✓ EN-JL1030 cast iron construction according to UNI EN 1561 with modular body.
- ✓ Replaceable screw-less armoured internal volute in EN-JS1030 nodular cast iron according to UNI EN 1563
- ✓ Spheroidal cast iron impeller, designed with open-blade shape.
- ✓ Mechanical seal in high resistance hard metal.
- ✓ Large-size inspection hatches to facilitate cleaning and inspection.
- ✓ Standardised EN1092-1:2003 flanged inlet and outlet with built in threaded rod.

VERSIONS

Code	RB316B	RB316A	RB316O
PUMP			
RPM	2900	2900	2900
P MAX (kW)	4	5.5	7.5
Q MAX (m ³ /h)	90	90	90
H MAX (m)	20	24	28
Ø Inlet/outlet (mm) Inlet / outlet	80 / 80	80 / 80	80 / 80
Ø Impeller (mm) - N. blades	138 - 3	146 - 3	160 - 3
Ø Seal (mm)	32	32	32
Free solids passage MAX size (mm)	35 x 25	35 x 25	35 x 25

ELECTRIC SURFACE NORMALIZED MOTOR

IEC size - RPM - Poles	112M - 2900 - 2	132S - 2900 - 2	132S - 2900 - 2
Power (kW)	4	5.5	7.5
Priming time from 4 m depth (s)	20	18	22
Nominal Current (A)	8.1	10.5	14.3
Voltage (V) - Frequency (Hz)	400 - 50	400 - 50	400 - 50
Oversized el. motor for monobloc version	Yes	Yes	Yes
Protection	IP55	IP55	IP55

PUMP SET UP AVAILABLE

Possible coupling versions (total weight)			
T: Monobloc (kg)	98	110	115
S: Bare shaft pump (kg)	80	80	80
S/T...: Complete pump assembly (kg)	151	163	168

STANDARD MATERIAL OF CONSTRUCTION

Pump body	Cast Iron GJL250
Armored volute	Nodular cast iron GJS400
Impeller	Nodular cast iron GJS400
Mechanical Seal	Silicon Carbide / Viton®
Shaft	Steel C40
Elastomers	Nitrile

Special metallurgies available on demand.

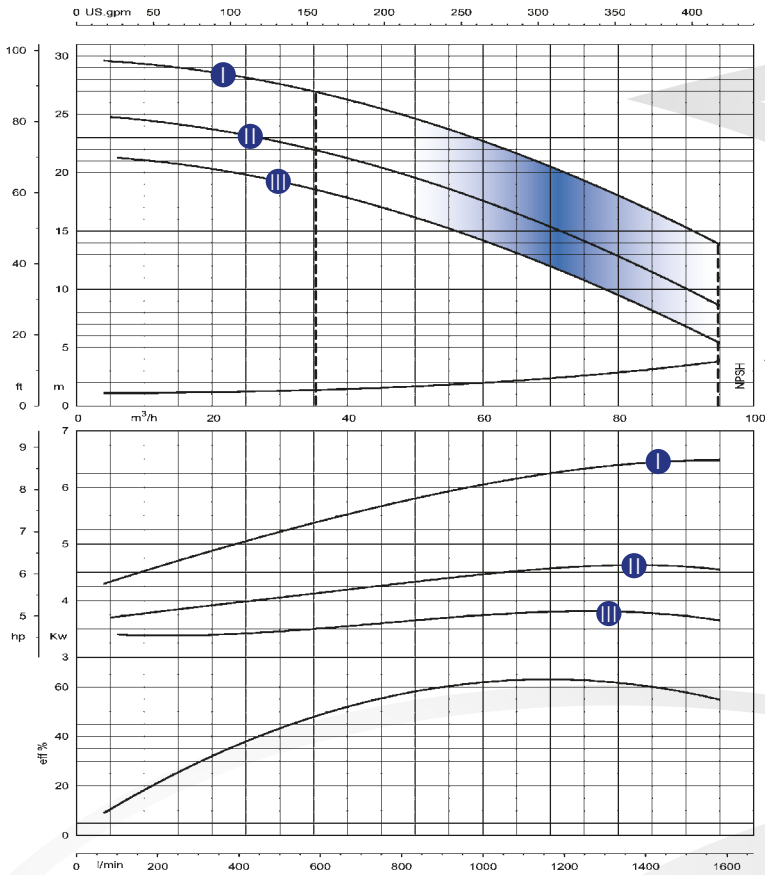


SELF-PRIMING CENTRIFUGAL ELECTRIC PUMPS

RB316



POMPE • ITALIA



PUMP PERFORMANCE RANGE

- I RB316
- II RB316A
- III RB316B

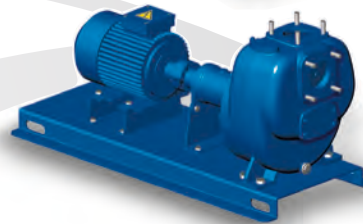
Performances are subjected to variations based on NPSH available.



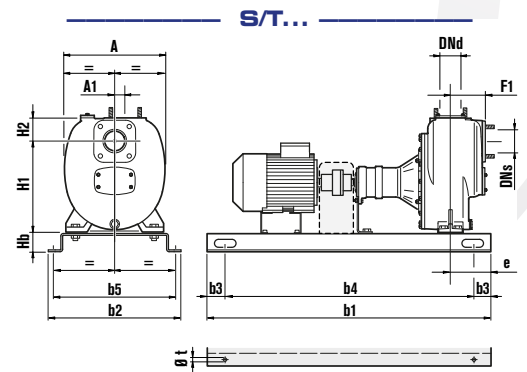
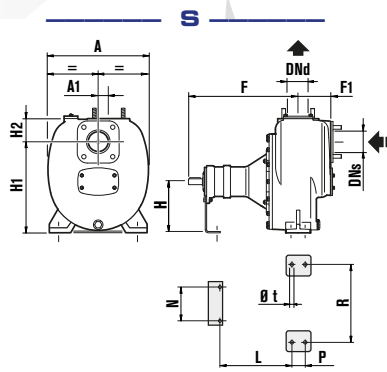
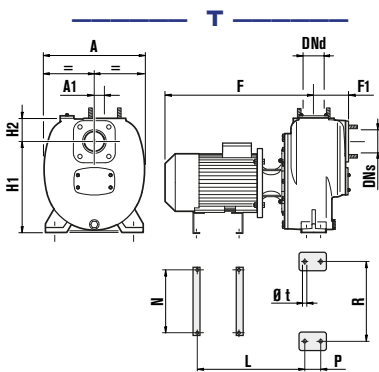
T
MONOBLOC



S
BARE SHAFT PUMP



S/T...
BASE-FRAME
AND COUPLING



DIMENSIONS mm	DNs	DNd	A	A1	b1	b2	b3	b4	b5	e	F	F1	H	H1	H2	Hb	L	N	P	R	ø t
RB316AGT	80	80	350	80							564	156		319	109		422	250		260	18
RB316BGT	80	80	350	80							520	156		319	109		403	250		260	18
RB316OGT	80	80	350	80							564	156		319	109		422	250		260	18
RB316A / B GS	80	80	350	80							437	156	170	319	109		320	152		260	18
RB316AGS/T52	80	80	350	80	1000	450	170	660	400	75		156		319	109	80					17
RB316BGS/T42	80	80	350	80	1000	450	170	660	400	75		156		319	109	80					17
RB316OGS/T72	80	80	350	80	1000	450	170	660	400	75		156		319	109	80					17

All dimensions and data a.m. reported are indicative, not binding and subjected to modifications without notice.