



TWINCROWN CONTROL SYSTEM

SPECIFICATIONS

Positive displacement flowmeters

PD series Flowmeter

TWINCROWN SYSTEM PD series flow meter is a rotary vane type positive displacement meter.

Features

- Superior Accuracy
- Low Pressure Drop
- Accurate Registration
- Long Service Life

Applications

- Refined petroleum products
- Aviation fuels
- Agricultural chemicals
- Paints and coatings
- Foods and beverages
- Petrochemicals
- Pharmaceuticals
- Cosmetics
- Printing Inks
- Textiles



OPERATING SPECIFICATIONS

MAXIMUM FLOW RATE

	GPM	LPM
Continuous rating 2" Standard Trim	100	450
Continuous rating 3" Standard Trim	200	900
Continuous rating 4" Standard Trim	450	1700

MINIMUM FLOW RATE

	GPM	LPM
Continuous rating 2" Standard Trim	10	45
Continuous rating 3" Standard Trim	16	75
Continuous rating 4" Standard Trim	30	130

TEMPERATURE

Standard meter with	
Buna-N / PTFE7	-30 to 60 deg C
Viton:	-30 to 90 deg c

MAX PRESSURE

150 PSI (10.5 BAR)

PD series meter sets new levels of accuracy, reliability and low cost of ownership. Ground-breaking design guarantees long-term calibration stability, coupled with the wide range of sizes, 30 to 150mm (2 in. to 4 in.), with wide range choice of body materials specifically for custom metering required quickly established as the de fact industry standard positive displacement flow meter.

Assured Quality PD meters are designed and manufactured in accordance with international quality procedures and all flowmeters are tested on industry approved rigs to provide the end user with complete assurance of both quality and performance of the meters

MATERIAL OF CONSTRUCTION

	TRIM	HOUSING	INTERNAL	SEALS
Standard	Aluminium	Aluminium	Iron, Steel, stainless steel, Aluminum	Buna viton or PTFE
Special*	Application specific	Application specific	Application specific	Application specific

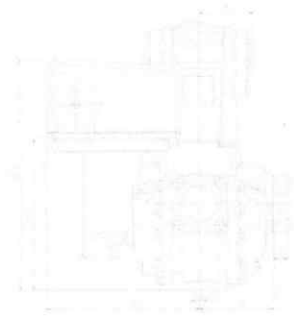
CATALOG CODE

The following guide defines the correct PD meter for a given application

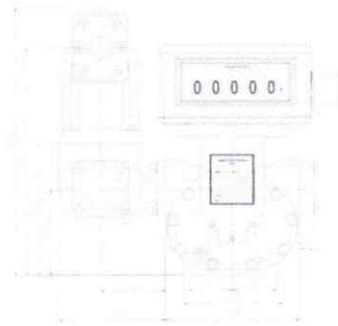
1	2	3	4	5
SERIES	SIZE	CONFIGURATION CODE	TRIM	SPECIALS
M50	2" -20	1- Standard configuration includes Strainer Air eliminator Mechanical counter	Blank Standard configuration Suitable for refined Petroleum products such as Fuel oil, Diesel, gasoline, Ethylene Glycol, Motor oil	1. Electronic counter 2. POD 3. *Configured with pump and motor
M80	3" -30	2 includes Meter Counter	2. *Special application based construction	
M100	4" -40	3 includes Strainer Air eliminator Mechanical counter Preset valve Preset counter		
		4 includes Air eliminator Strainer Meter Mechanical counter with printer		
		5 includes Air eliminator Strainer Meter Mechanical Preset counter Preset valve		
		6. *Special Configuration		

*Please consult factory for more information

DIMENSIONAL DRAWING

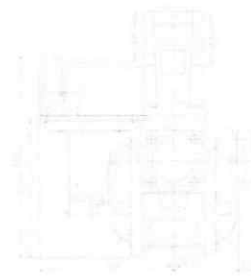


SIDE VIEW

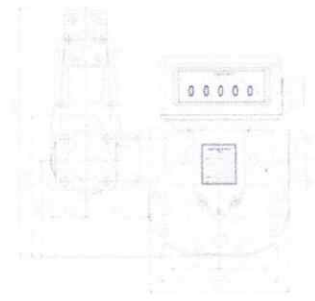


FRONT VIEW

M50



SIDE VIEW



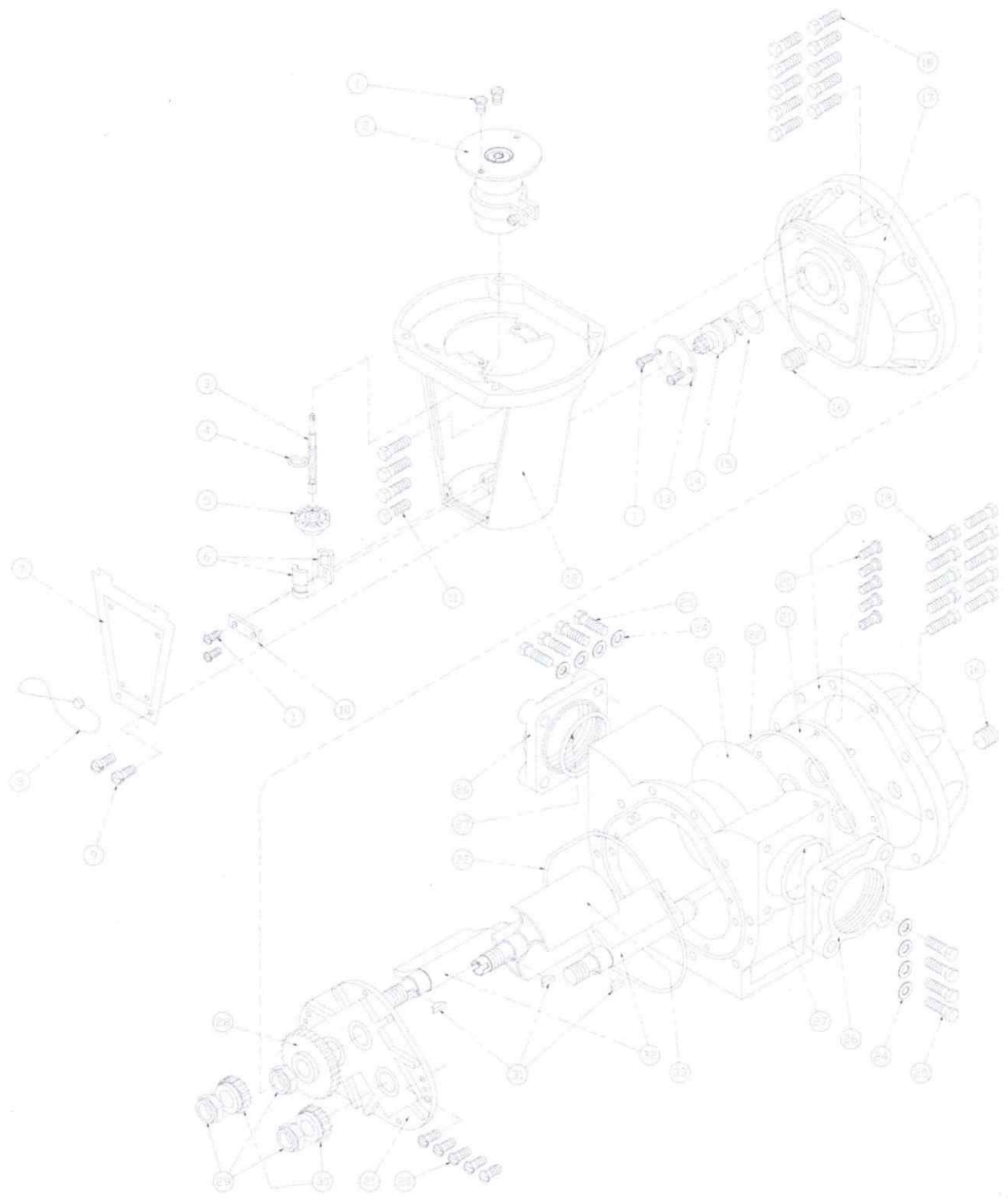
FRONT VIEW

M80

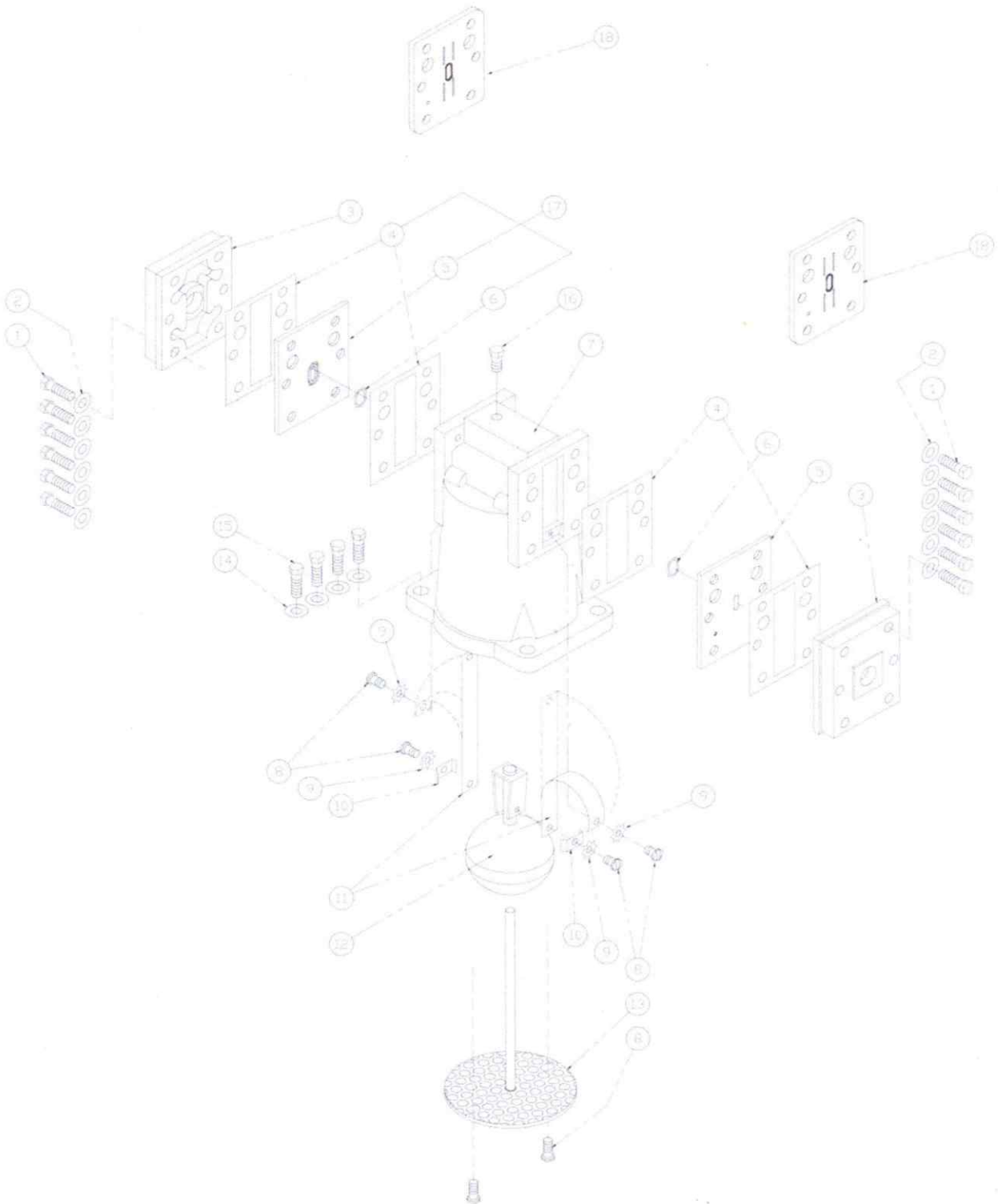
WARRANTY

TWINCROWN SYSTEM warrants that the equipment manufactured and sold by it will, and upon shipment, be free of defects in workmanship or materials. Should and failure to conform to this warranty become apparent during a period of one year after the date of shipment. Upon prompt written notice from the purchaser, correct such nonconformity by repair and replacement, FOB factory of the defective part or parts. Correction in the manner provided above shall constitute a fulfillment of all liabilities with respect to the quality of the equipment.

Meter Assembly



Air Eliminator Assembly



Meter Assembly

Item	Description	Qty
1	Round Head Screw	6
2	Adjuster Assembly	1
3	Drive Shaft	1
4	E-Ring	1
5A	Acetal Face Gear, STD	1
5B	Brass Face Gear, High Temperature	1
6A	Acetal Bushing, STD	2
6B	Brass Bushing, High Temperature	2
7	Adjuster Cover Plate	1
8	Seal Wire	1
9	Drilled Head Screw	2
10	Drive Shaft Retainer	1
11	Head Mount Screw	4
12	Register Support	1
13	Packing Retaining Plate	1
14A	2:1 Packing Capsule Assy., STD	1
14B	1:1 Packing Capsule Assy.	1
15	Packing O-ring	1
16	Plug	2
17	Front Cover	1
18	Cap Screw	20
19	Rear Cover	1
20	Round Head Screw	10
21	Bearing Plate	2
22	Cover O-ring	2
23	Housing	1
24	Flat Washer	8
25	Cap Screw	8
26	NPT Flange	2
27	Flange O-ring	2
28	Blocking Gear	1
29	Rotor Lock Nut	3
30	Displacement Gear	2
31	Rotor Key	3
32	Displacement Rotor	2
33	Blocking Rotor	1

Air Eliminator Assembly

Item	Description	Qty
1	Cap Screw	12
2	Ring Washer	12
3	Outlet Cover	2
4	Plate Seal	4
5	Valve Plate	2
6	O-ring	2
7	Air Eliminator Housing	1
8	Screw	6
9	Split Lock Washer	2
10	Retaining Clip	2
11	Reed Valve	2
12	Float Assembly	1
13	Diffuser and Shaft Assembly	1
14	Flat Washer	4
15	Cap Screw	4
16	Plug	1
17	Valve Plate Kit	2
18	Encapsulated Valve Plate	2