



TWINCROWN CONTROL SYSTEM

SPECIFICATIONS

Positive displacement flowmeters

PD series Flowmeter

TWINCROWN SYSTEM PD series flow meter is a rotary vane type positive displacement meter.

Features

- Superior Accuracy
- Low Pressure Drop
- Accurate Registration
- Long Service Life

Applications

- Refined petroleum products
- Aviation fuels
- Agricultural chemicals
- Paints and coatings
- Foods and beverages
- Petrochemicals
- Pharmaceuticals
- Cosmetics
- Printing inks
- Textiles



Meter for Flammable Liquid

PD series meter sets new levels of accuracy, reliability and low cost of ownership. Ground-breaking design guarantees long-term calibration stability, coupled with the wide range of sizes, 30 to 150mm (2 in.to 4 in.), with wide range choice of body materials specifically for custom metering required quickly established as the de fact industry standard postive displacement flow mter.

Assured Quality PD meters are designed andmanufactured in accordance with international qualitt procedures and all fowmetrs are tested on industry approved rigs to provide the end user with complete assurance of both quality and performance of the meters.

OPERATING SPECIFICATIONS

MAXIMUM FLOW RATE		
	GPM	LPM
Continuous rating 2" Standard Trim	100	550
Continuous rating 3" Standard Trim	200	900
Continuous rating 4" Standard Trim	450	1700

MINIMUM FLOW RATE		
	GPM	LPM
Continuous rating 2" Standard Trim	10	45
Continuous rating 3" Standard Trim	16	75
Continuous rating 4" Standard Trim	30	130

TEMPERATURE	
Standard meter with	
Buna-N/PTFE7	-30 to 60 deg C
Viton:	-30 to 90 deg c

MAX PRESSURE
150 PSI (10.5 BAR)

MATERIAL OF CONSTRUCTION				
	TRIM	HOUSING	INTERNAL	SEALS
Standard	Aluminium	Aluminium	Iron, Steel, stainless steel Aluminum	Buna viton or PTFE
Special*	Application specific	Application specific	Application specific	Application specific



CATALOG CODE

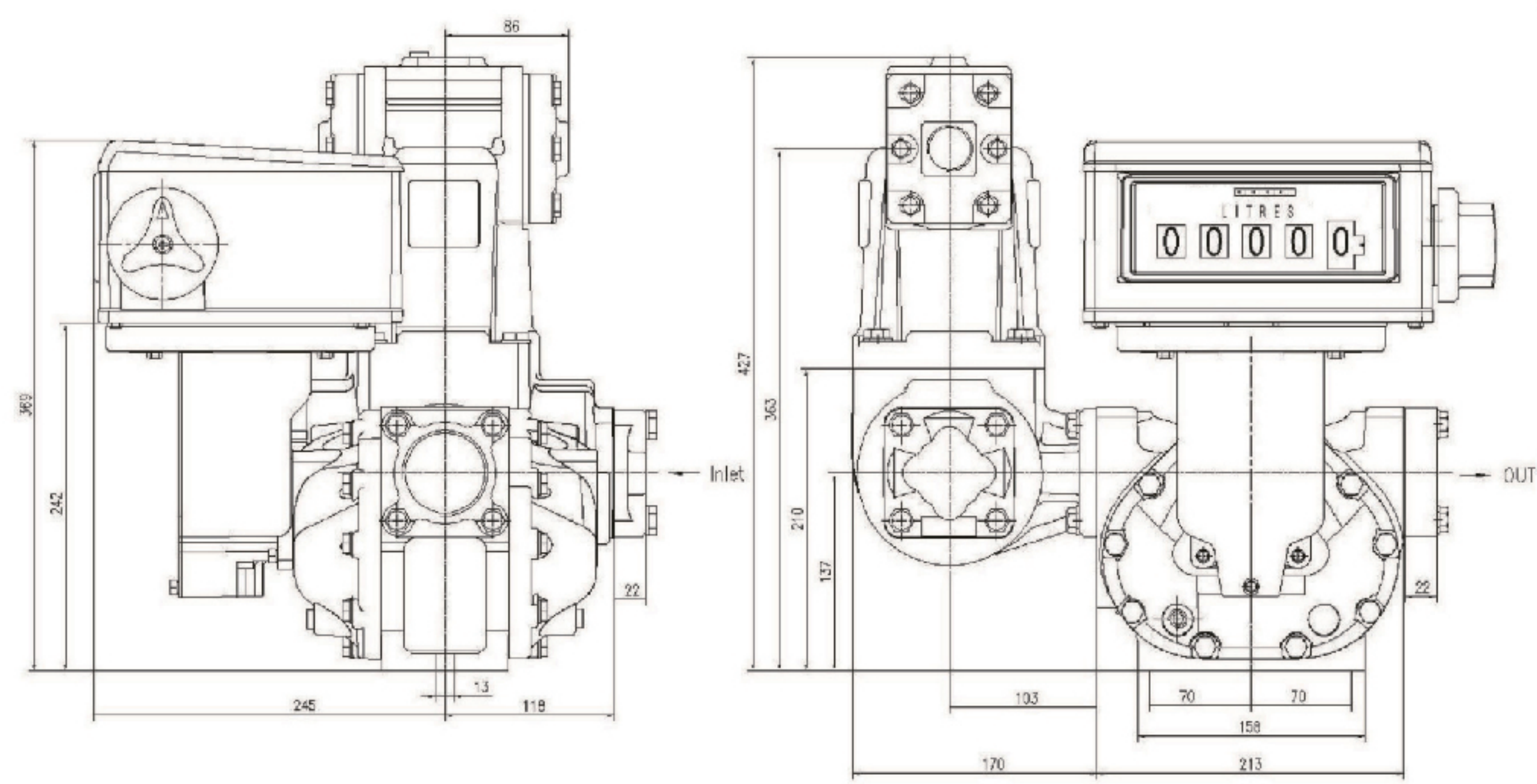
The following guide defines the correct PD meter for a given application

1	2	3	4	5
SERIES	SIZE	CONFIGURATION CODE	TRIM	SPECIALS
M50	2" -20	1- Standard configuration includes Strainer Air eliminator Mechanical counter	Blank Standard configuration Suitable for refined Petroluem products such as Fuel oil, Diesel, gasoline, Ethylene Glycol, Motor oil	1. Electronic counter 2.POD 3. *Configured with pump and motor
M80	3" -30	2 includes Meter Counter	2.*Special application based construction	
M100	4" -40	3 includes Strainer Air eliminator Mechanical counter Present valve Present counter		
		4 includes Air eliminator Strainer Meter Mechanical counter with printer		
		5 includes Air eliminator Strainer Meter Mechanical Preset counter Preset valve		
		6.*Special Configuration		

*Please consult factory for more information



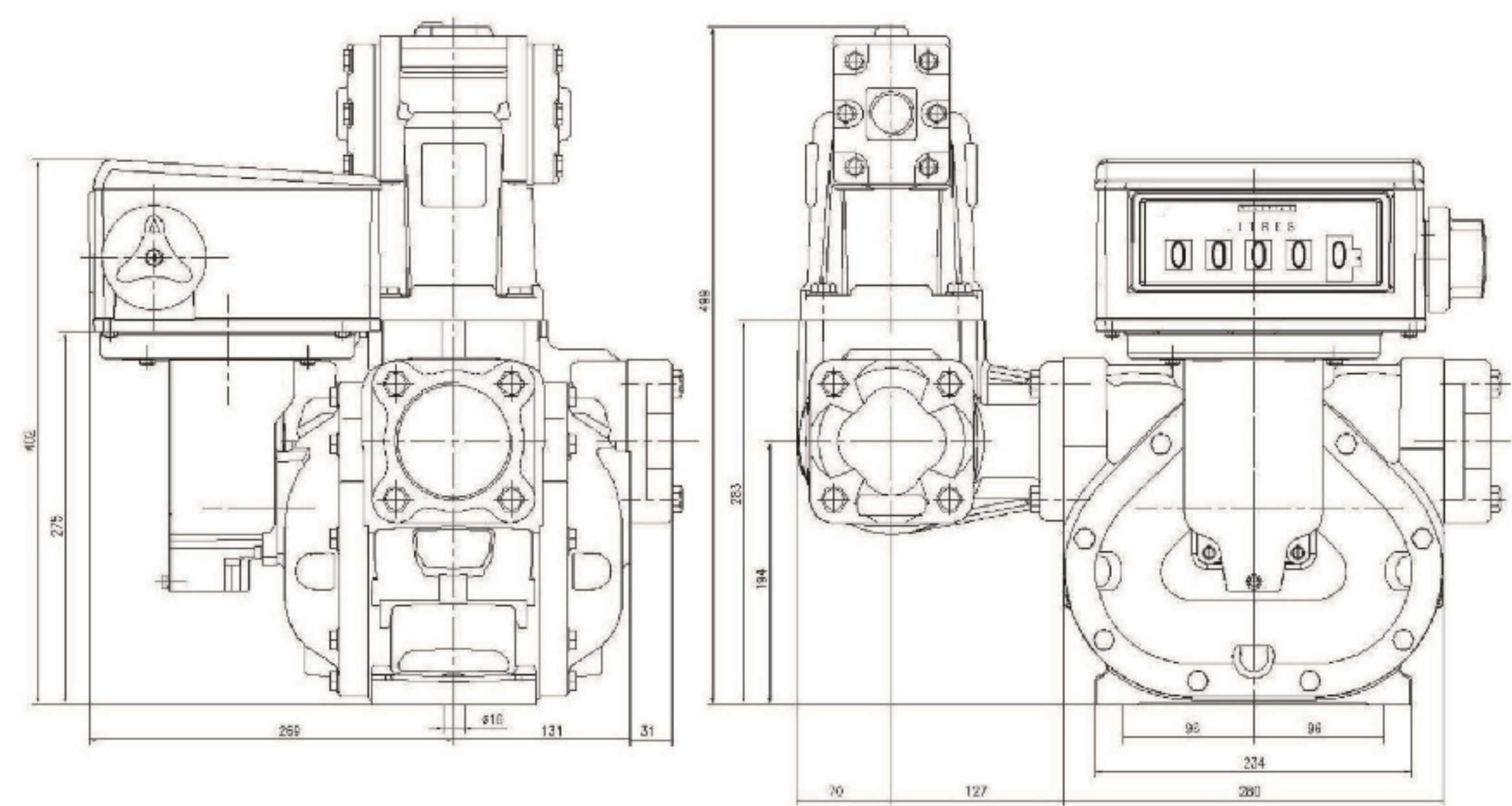
DIMENSIONAL DRAWING



SIDE VIEW

FRONT VIEW

M50



SIDE VIEW

FRONT VIEW

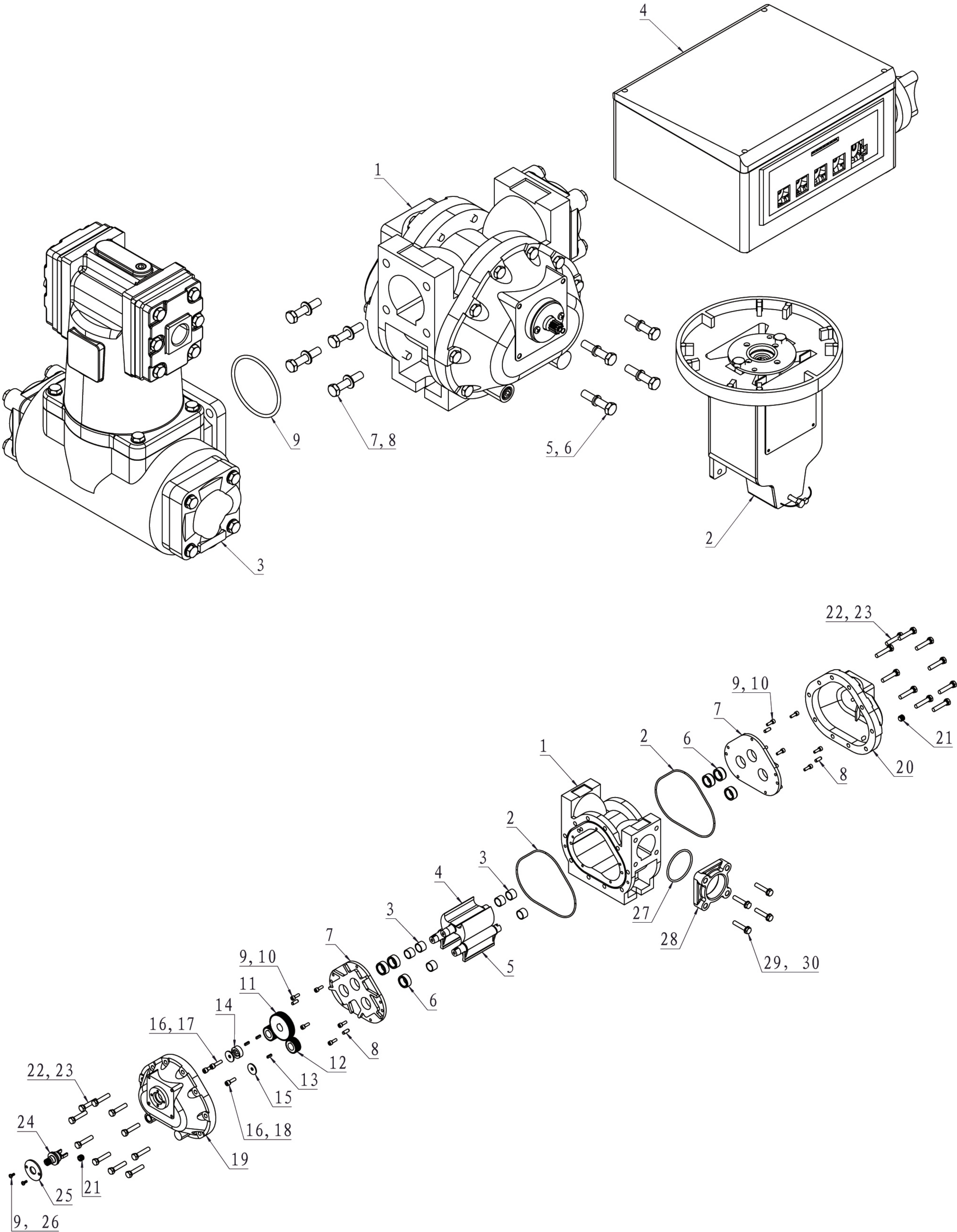
M80

WARRANTY

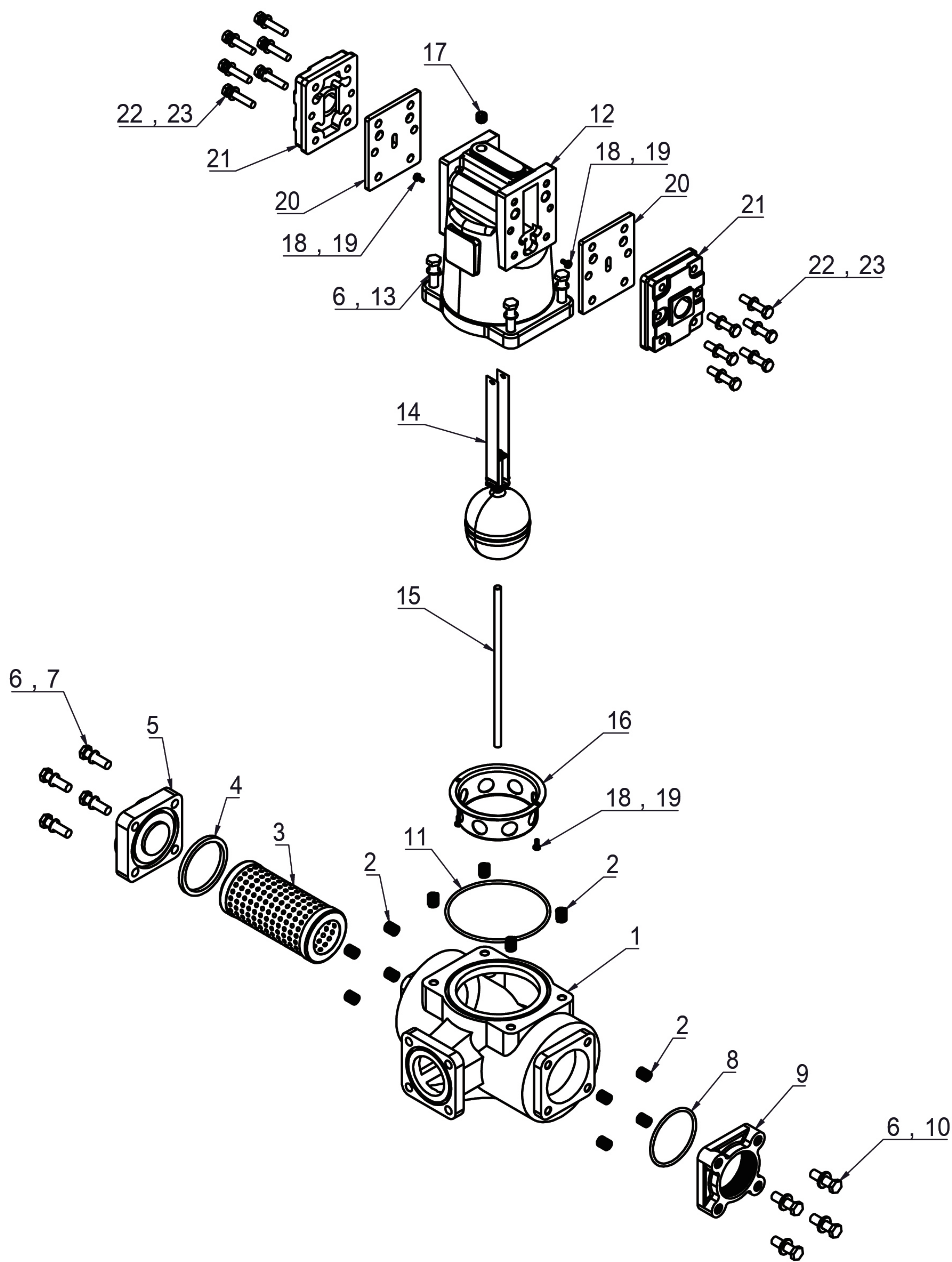
TWINCROWN SYSTEM warrants that the equipment manufactured and sold by it will, and upon shipment, be free of defects in workmanship or materials. Should and failure to conform to this warranty become apparent during a period of one year after the date of shipment. Upon prompt written notice from the purchaser, correct such nonconformity by repair and replacement, FOB factory of the defective part or parts. Correction in the manner provided above shall constitute a fulfillment of all liabilities with respect to the quality of the equipment.



Meter Assembly



Air Eliminator Assembly



Meter Assembly

Item	Description	Qty
1	Flow meter body assembly	1
2	Counter bracket assembly	1
3	Air Eliminator& Strainer assembly	1
4	Mechanical counter assembly	1
5	Spring washer	4
6	Internal hex screw	4
7	Flat washer	4
8	External hex screw	4
9	O-ring	1

Item	Description	Qty
1	Flow meter body	1
2	O ring	2
3	Shaft journal	6
4	Rotor	1
5	Blade	2
6	Graphite bushing	6
7	Bearing seat	2
8	Cylindrical pin	4
9	Spring washer	12
10	Internal hex screw	10
11	Rotor gear large	1
12	Blade gear small	2
13	Type B flat key	3
14	Dial plate	1
15	Butterfly washer	2
16	Spring washer	3
17	Internal hex screw	1
18	Internal hex screw	2
19	Front cover	1
20	Rear cover	1
21	Internal hex plug	2
22	Flat washer	20
23	External hex screw	20
24	Drive seal assembly	1
25	Seal seat pressure plate	1
26	Crosshead screw	2
27	O ring	1
28	Inlet and outlet flange	1
29	Flat washer	4
30	External hex screw	4

Air Eliminator Assembly

Item	Description	Qty
1	Filter housing	1
2	Wire thread insert M10x1.5-2D	8
3	Filter mesh (60 mesh)	1
4	Rectangular seal Φ65x Φ76x5.5	1
5	Filter end cap	1
6	Flat washer M10x Φ20x1.5	12
7	External hex bolt M10x35	4
8	O-ring seal (Inner diameter Φ69x3.55)	1
9	Inlet and outlet flange	1
10	External hex bolt M10*40	4
11	O-ring seal (Outer diameter Φ125x3.55)	1
12	Separator housing	1
13	External hex bolt M10x30	4
14	Float assembly	1
15	Float guide rod	1
16	Float filter screen	1
17	Internal hex plug NPT 1/4	1
18	Flat washer M4x Φ9x0.8	4
19	Crosshead screw M4x10	4
20	Valve plate	2
21	Separator side cover	2
22	Flat washer M8x Φ16x1.5	12
23	External hex bolt M8x40	12