



et EQUIPTANK



GASSO

ISO Certificate 9001:2008



CONTENTS

| | |
|---|-----------|
| * Overfill prevention equipments | 5 |
| * Optic sensors | 5 |
| * Cable | 11 |
| * Sockets | 12 |
| * Dummy | 14 |
| * Ground Bolt | 15 |
| | |
| * Manhole covers | 16 |
| * 20" Manhole Covers | 16 |
| * 16" Manhole Covers | 22 |
| * Collar rings | 27 |
| * Gaskets | 28 |
| * Dip Stick Tubes | 30 |
| * Dip Sticks | 31 |
| | |
| * Safety Valves | 32 |
| * 5 Effect Safety Valve | 32 |
| * Internal Safety Valves | 34 |
| * External Safety Valves | 38 |

CONTENTS

| | |
|--|------------|
| * Vapor recovery equipments | 40 |
| * Vapor recovery valves | 40 |
| * Hoses | 48 |
| * Support Valves | 50 |
| * Vapor recovery adaptors | 56 |
| * Bottom loading equipments | 65 |
| * API Valves | 65 |
| * API Gravity Drop Adaptors | 78 |
| * Bottom Valves | 87 |
| * 4” Pneumatic Manifold | 108 |
| * 3” Ball valves | 110 |
| * Pneumatic System | 114 |
| * Control Panel | 114 |
| * Hose | 116 |
| * Emergency Brake Button | 117 |
| * Filter Regulator/Lubricator | 118 |
| * Product Indicator | 119 |
| * Precintank ICC | 120 |

2 Wire Optic Overfill Sensor

Art. DT2.03



Design for overfill prevention during loading operation of fuel tankers.

Manufactured in compliance with 94/9/CE (ATEX) and European EN13922:2003 regulations regarding overfill prevention systems.

CE test certificate type LOM 04ATEX2117.

IP protection degree 65.

Temperature range: -40°C / +60°C

CHARACTERISTICS

For tankers of up to 8 compartments.

For tankers of less compartments our electronic simulator of compartments (DUMMY) model SD7.03 is used, which simulates up to 7 compartments.

Optic sensor of immediate response.

Immediate authorization at connection without waiting periods.

Maximum reliability with continuous self-check as required by EN13922 regulation.

Sturdy construction.

Last generation electronics for more reliability and endurance.

Invers polarity protection

Compatible with all the 2 wire thermistor and optic controllers.

Intrinsically safe.

Certified for use in zone zero.

CONSTRUCTION MATERIALS:

Aluminium alloys.

Borosilicate glass.

Gaskets in fluoroelastomer.

2 Wire Optic Overfill Sensor

Art. DT2.03

Adjustable height.

Detection height

5" → 135 to 180 mm

7" → 180 to 230 mm

15" → 355 a 400 mm

Other heights under request.

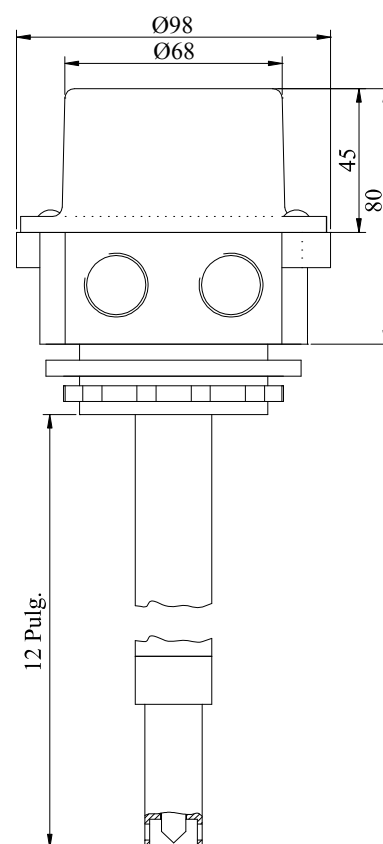
Wire hole

* PG16 european electrical thread

* M20 x 1,5 thread

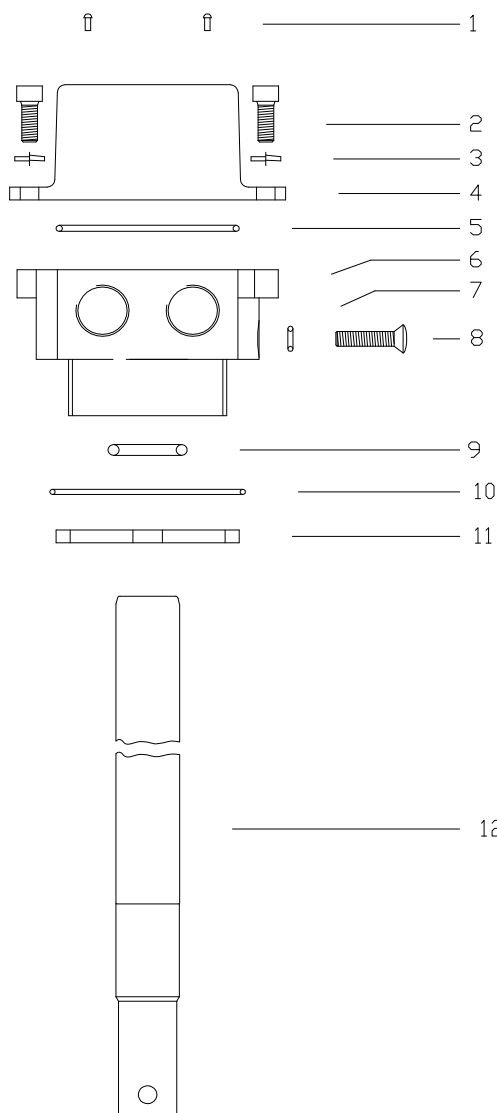
* Special fabrication of other types of threads.

Weight: 0,95 kg



2 Wire Optic Overfill Sensor

Art. DT2.03



| Fig. | Qty. | Description | Art. |
|------|------|-----------------------|----------|
| 1 | 2 | Plate fixing rivet | 781211 |
| 2 | 2 | Allen screw | 781205 |
| 3 | 2 | Glover washer | 781206 |
| 4 | 1 | Detector cap | 781102 |
| 5 | 1 | Cap gasket | 781204 |
| 6 | 1 | Body | 781101 |
| 7 | 1 | Fixing screw gasket | 781212 |
| 8 | 1 | Cane fixing screw | 781215 |
| 9 | 1 | Cane gasket | 781203 |
| 10 | 1 | Body gasket | 781214 |
| 11 | 1 | Fixing nut | 781122 |
| 12 | 1 | DT2 tip with 5" cane | 7815042C |
| | 1 | Connection accesories | 781131C |

OPTIONS:

DT2 sensor tip kit and cane lengths:

| | |
|---------------|-----------------|
| Art. 7815042C | 5" cane length |
| Art. 7815043C | 15" cane length |
| Art. 7815044C | 7" cane length |

5 Wire Optic Overfill Sensor

Art. DT5.03



Design for overfill prevention during loading operation of fuel tankers.

Manufactured in compliance with 94/9/CE (ATEX) and European EN13922:2008 regulations regarding overfill prevention systems.

CE test certificate type LOM 04ATEX2117.

Ip protection degree 65.

Temperature range: -40°C / +60°C

CHARACTERISTICS

Optic sensor of immediate response.

Immediate authorization at connection without waiting periods.

Maximum reliability with continuous auto check as required by EN13922 regulation.

Sturdy construction.

Last generation electronics for more reliability and endurance.

Invers polarity protection

Compatible with all the 5 wire controllers.

CONSTRUCTION MATERIALS:

Aluminium alloys.

Borosilicate glass.

Gaskets in fluoroelastomer.

5 Wire Optic Overfill Sensor

Art. DT5.03

Adjustable height.

Detection height

5" → 135 to 180 mm

7" → 180 to 230 mm

15" → 355 to 400 mm

Other heights under request.

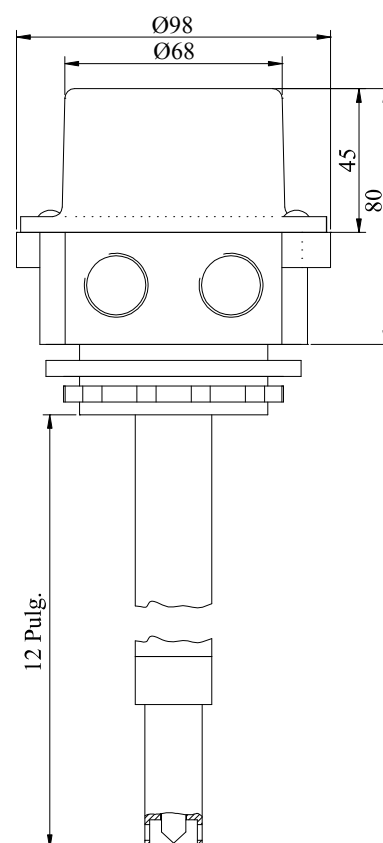
Wire hole

PG16 european electrical thread

M20 x 1,5 thread

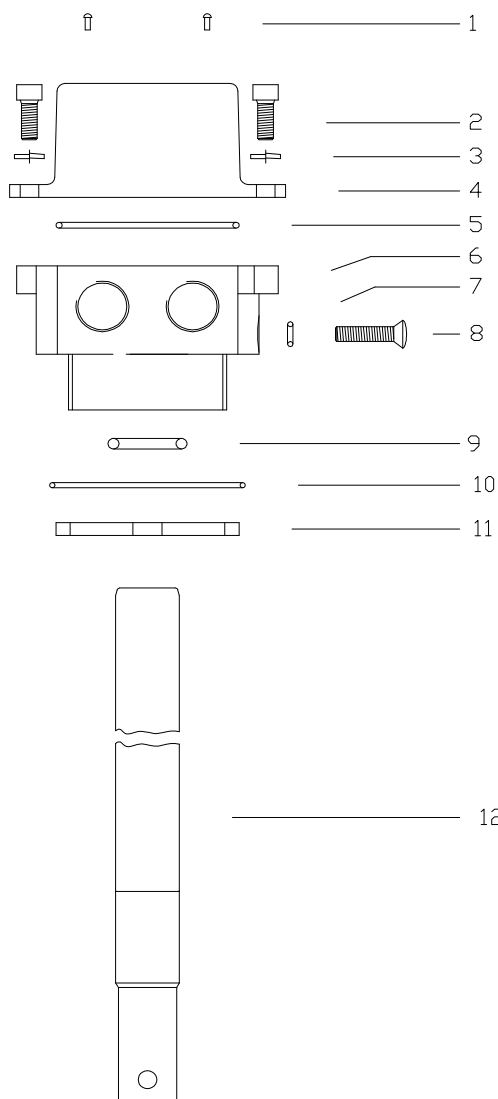
Special fabrication of other types of threads.

Weight: 0,95 kg



5 Wire Optic Overfill Sensor

Art. DT5.03



| Fig. | Qty. | Description | Art. |
|------|------|-----------------------|----------|
| 1 | 2 | Sheet fixing rivet | 781211 |
| 2 | 2 | Allen screw | 781205 |
| 3 | 2 | Gloover washer | 781206 |
| 4 | 1 | Detector cap | 781102 |
| 5 | 1 | Cap gasket | 781204 |
| 6 | 1 | Body | 781101 |
| 7 | 1 | Fixing screw gasket | 781212 |
| 8 | 1 | Cane fixing screw | 781215 |
| 9 | 1 | Cane gasket | 781203 |
| 10 | 1 | Body gasket | 781214 |
| 11 | 1 | Fixing nut | 781122 |
| 12 | 1 | DT5 tip with 5" cane | 7815045C |
| | 1 | Connection accesories | 781131C |

OPTIONS:

DT5 sensor tip kit and cane lengths:

| | |
|---------------|-----------------|
| Art. 7815045C | 5" cane lenght |
| Art. 7815046C | 15" cane lenght |
| Art. 7815047C | 7" cane lenght |

Overfill sensor cable

Art. CDT5L

Characteristics of the overfill sensor cable Art. CDT5L.

PUR > 440P 5 x 1 Approved in compliance with regulation 73/23 EEC (Low Voltage Directive)

Exterior cover (blue > RAL 5015) EQUIPTANK branded

Conductive colors: white, gray, blue, green, yellow

Internal guide in plastic.

Working temperature in flexion: -40°C to +90°

EG KONFORMITÄTSERKLÄRUNG
EC DECLARATION OF CONFORMITY

Dokument-Nr. / Monat / Jahr **E 0012800 – B1 / 10 / 98**
Document No. / month / year

Wir erklären in alleiniger Verantwortung, daß das Erzeugnis:
We declare under our sole responsibility, that the product:

PUR Steuerleitung
PUR Control Cable

ÖLFLEX® 440 P

den Bestimmungen der EG-RICHTLINIE 73/23 EWG (Niederspannungsrichtlinie) entspricht.
follows the provisions of EC Directive 73 / 23 EEC (Low Voltage Directive).

Die Übereinstimmung wird mit der Einhaltung folgender Normen nachgewiesen:
Compliance with the standards below proves the conformity of the designated product.

In Acc. to:

HD 22.10 S1 / VDE 0282-10
HD 21.13 S1 / VDE 0281-13
Werknorm W 0012800

Datum der erstmaligen Anbringung der CE Kennzeichnung: **97**
Date of first fixing of the CE label:

Stuttgart, den 14.10.98
U.S.LAPP GmbH
Kabeltechnik

S. Schönbauer

Registergericht: Amtsgericht Stuttgart HRB 12720

Geschäftsführer: Andreas Lapp, Dr. Ewald Bertsch, Armin Heß
Vorsitzende des Aufsichtsrats: Frau Ursula Lisa Lapp

Flame retardant (IEC 60332.1)

Microbe and hidrólisis resistant

Halogen free

Conductives with TPE isolation and

cabled by layers

Tension test 3000V

Tested according to VDE.

Socket

Series BE10/BE11



WEIGHT: 1,3 Kg

Compatible with all existing controller models.
Designed for optimum connection with the truck.
Manufactured in compliance with European regulation EN13922:2003 (interchangeable with API RP-1004).

4 hook socket 10 pin female connector.

3 hook socket 6 pin female connector.

This element is part of the overfill prevention system which has the LOM 04ATEX2118 certificate.

CHARACTERISTICS:

For use with 2 wire sensors (optic and thermistor) and 5 wire optic sensors.
The dummy can be lodge inside the case.

As an option it can be supplied with a interlocking pneumatic switch for the vapor recovery hose.

Includes a ground connection pin.

Sturdy construction.

MATERIALS:

Body in aluminium alloy.

Elastomer plug with fastening cable.

Hard anodize treatment for better resistance and endurance.

WIREHOLE:

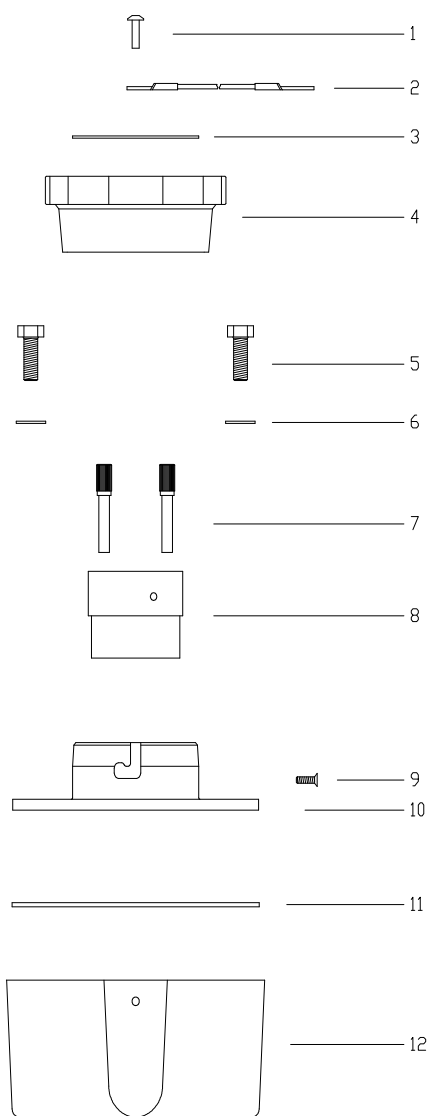
M20 X 1,5 thread

PG16 European electric thread

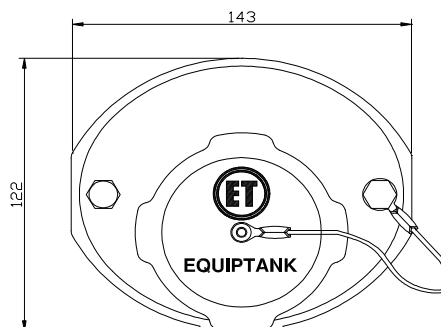


Socket

Series BE10/BE11



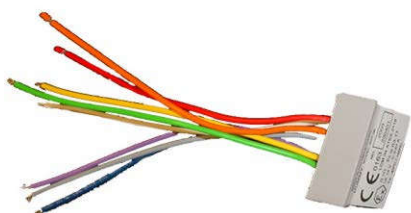
| Fig. | Qty | Description | Art. |
|------|-----|---------------------------|---------|
| 1 | 1 | Base cap | 782209C |
| 2 | 2 | Fixing screw | 782301 |
| 3 | 2 | Fixing washer | 782302 |
| 4 | 10 | Connection pins | 782208 |
| 4 | 1 | socket insulation | 782203 |
| 5 | 1 | Insulation blocking screw | 782307 |
| 6 | 1 | Socket base | 782202 |
| 7 | 1 | Socket base gasket | 782210 |
| 8 | 1 | PG16 socket casing | 782201 |
| | 1 | Connection accesories | 783003C |



| Art. | N° Pins | N° Hooks | Thread type | Pneumat c switch |
|-----------|---------|----------|-------------|------------------|
| BE10.03 | 10 | 4 | PG16 | NO |
| BE10.03M | 10 | 4 | M20 | NO |
| BE10.03N | 10 | 4 | NPT | NO |
| BE10.03MS | 10 | 4 | M20 | YES |
| BE11.03 | 6 | 3 | M20 | NO |
| BE11.03MS | 6 | 3 | M20 | YES |

Simulator (DUMMY)

Art. SD7.03



Manufactured in compliance with
European regulation EN13922:2003
(interchangeable with API RP-1004)
CE test certificate type LOM 04ATEX2118
IP protection degree 65

CHARACTERISTICS:

Simulates up to 7 compartments.

Use of only one Dummy for 1 and 2 compartment tankers.

Maximum reliability.

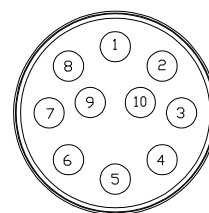
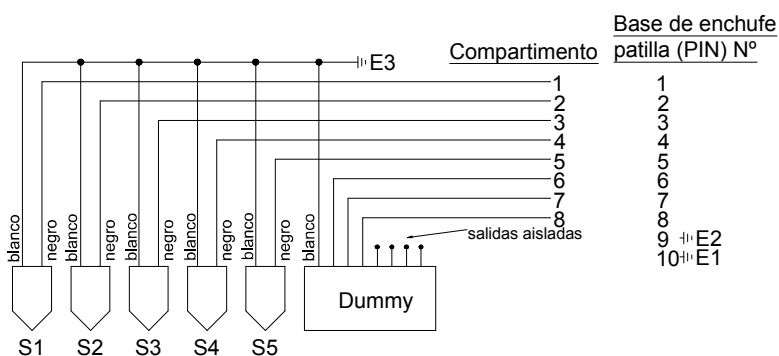
Sturdy construction.

Encapsulated electronic circuit in epoxy resin, in a container box.

Last generation electronics for more reliability and endurance.

Invers polarity protection

Compatible with all the 2 wire thermistor and optic controllers.



Ground bolt

Art. GB2/5



Weight: 0,06Kg

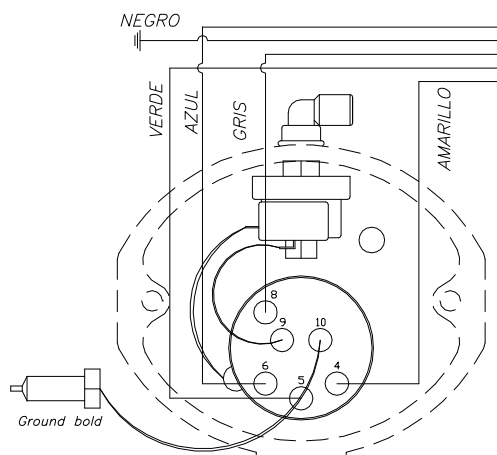
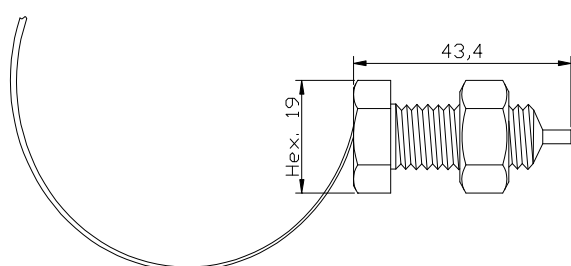
CHARACTERISTICS:

Prevents loading while the ground bolt is not properly connected.

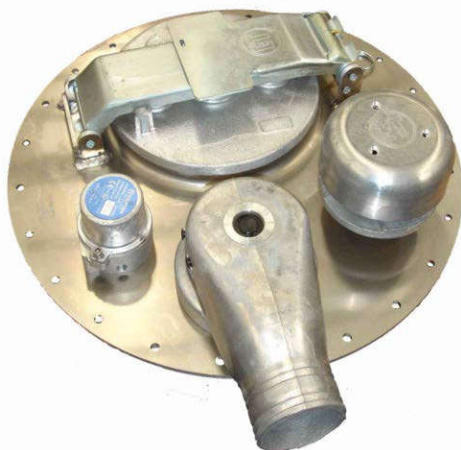
Stops the loading operation automatically if the ground bolt breaks at any momento of said operation.

Of easy installation.

Directly wired to EQUIPTANK's overfill prevention socket series BE11.



DN500 Bolted Manhole cover for fuel and by-products: Bottom Loading



Equiptank's PAF type DN500 Manhole covers, for fuel and by-product transportation, are design and manufactured in accordance with European, ADR and API RP1004 regulations.

BVQI certified according to UNE-EN 13314 and UNE-EN 13317 regulations.

The manhole cover is fixed to the collar ring by means of 24 steel screws (could be stainless steel).

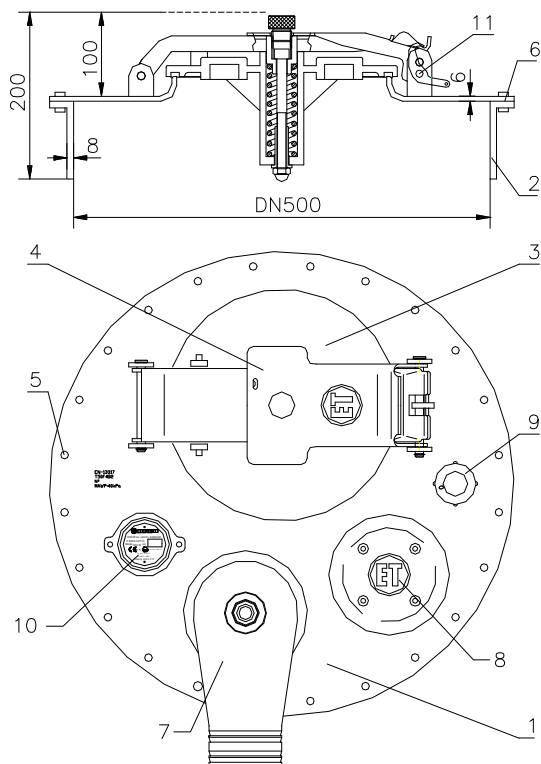
The DN 10" loading mouth doubles as a safety valve calibrated to an opening pressure of 30kPa, or optionally to 50 kPa (other calibrations under demand). This manhole cover complies with all the requirements for bottom loading and vapour recovery.

As an option, a secondary block for the closing system of the loading mouth can be supplied.

The manhole covers can incorporate the following elements:

- * 2" external safety valve. Art. VSB50B.
- * Internal safety valve. Art. VSRI5014.
- * Sequential vapor recovery valve. Art. 601000S / 602000S
- * Pressure relieve cap Art. 100100.
- * Cover bridge lock (closing system).
- * Overfill prevention optic sensor (Series DT5 / DT2).

DN500 Bolted Manhole cover for fuel and by-products: Bottom Loading



| Nº | DESCRIPTION |
|----|----------------------------------|
| 1 | Manhole cover. |
| 2 | Drilled collar ring (24xM8). |
| 3 | 10" PAF cover Calib 300±35 mbar. |
| 4 | Quick closing system. |
| 5 | Screws (24). |
| 6 | Collar ring gasket. |
| 7 | Sequential vapor recovery valve. |
| 8 | 2" external safety valve. |
| 9 | Pressure relieve cap |
| 10 | Overfill sensor. |
| 11 | Fixing mechanism. |

Materials:

A-430-B treated steel, 4 mm / 6 mm thickness

AISI-304 stainless steel, 4 mm thickness

AW5186 aluminium 6 mm / 8 mm thickness



DN500 Bolted Manhole cover for fuel and by-products: Top Loading



EQUIPTANK's PAF type DN500 Manhole covers, for fuel and by-product transportation, are design and manufactured in accordance with European, ADR and API RP1004 regulations. BVQI certified according to UNE-EN 13314 and UNE-EN 13317 regulations.

The manhole cover is fixed to the collar ring by means of 24 steel screws (could be stainless steel).

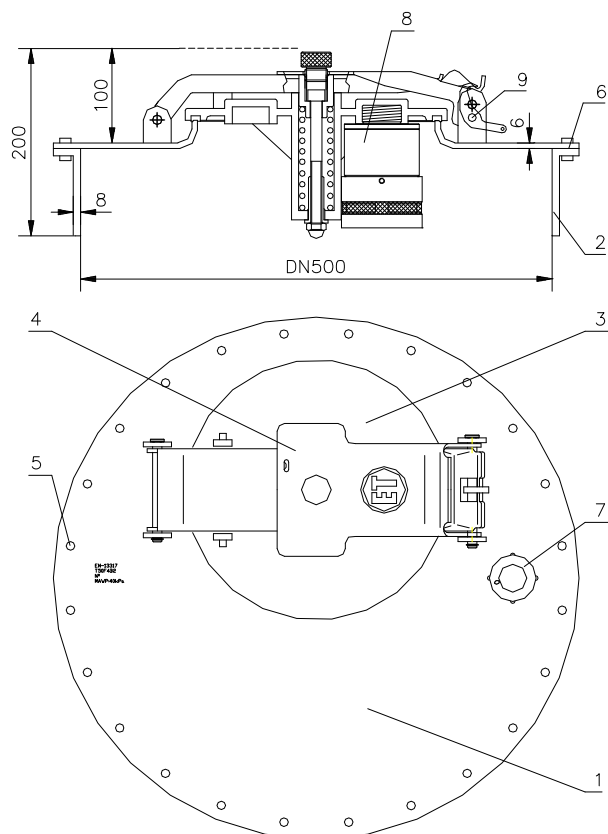
The DN 10" loading mouth doubles as a safety valve calibrated to an opening pressure of 30kPa, or optionally to 50 kPa (other calibrations under demand). This manhole cover complies with all the requirements for bottom loading and vapour recovery.

As an option, a secondary block for the closing system of the loading mouth can be supplied.

The Manhole covers can incorporate the following elements:

- * Internal safety valve Art. VSRI5014. Complies with UNE EN 14595 regulations. BVQI-E certified with certificate N° 5000661-J2-CPI.
- * Pressure relieve cap Art. 100100.
- * Cover bridge lock (closing system).

DN500 Bolted Manhole cover for fuel and by-products: Top Loading



| Nº | DESCRIPTION. |
|----|----------------------------------|
| 1 | Manhole cover. |
| 2 | Drilled collar ring (24xM8) |
| 3 | 10" PAF cover Calib: 300±35 mbar |
| 4 | Quick closing system. |
| 5 | Screws (24). |
| 6 | Collar ring gasket. |
| 7 | Pressure relieve cap |
| 8 | 1 1/4" internal safety valve |
| 9 | Fixing mechanism |

Materials:

A-430-B treated steel, 4 mm / 6 mm thickness

AISI-304 stainless steel, 4 mm thickness

AW5186 aluminium 6 mm / 8 mm thickness



DN500 Clamped Manhole cover for fuel and by-products



Equiptank's PAF type DN500 Manhole covers, for fuel and by-product transportation, are design and manufactured in accordance with European, ADR and API RP1004 regulations. The cover is fixed to the collar ring by means of a steel clamp.

The DN 10" loading mouth doubles as a safety valve calibrated to an opening pressure of 30kPa, or optionally to 50 kPa (other

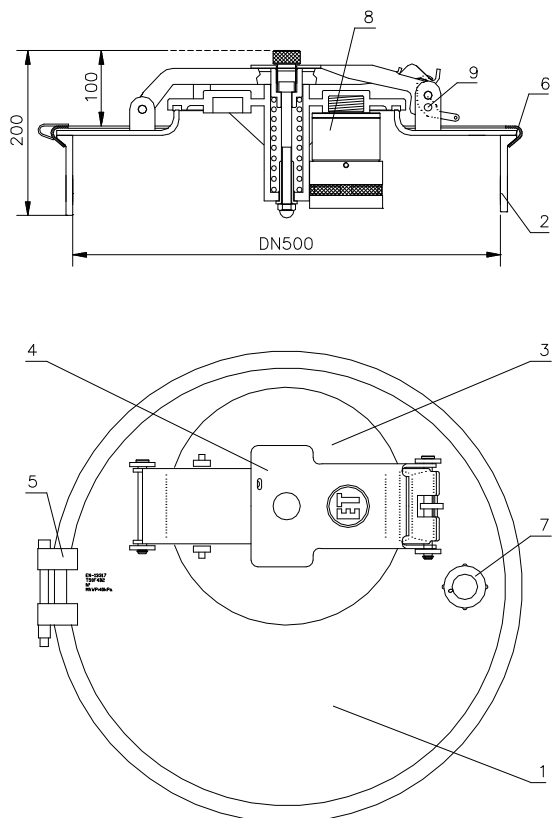
calibrations under request)

As an option, a secondary block for the closing system of the loading mouth can be supplied.

The Manhole cover can incorporate the following elements:

- * Internal safety valve Art. VSRI5014. Complies with UNE EN 14595 regulations. BVQI-E certified with certificate N° 5000661-J2-CPI.
- * Pressure relieve cap Art. 100100.
- * Cover bridge lock (closing system).
- * 2" External safety valve Art. VSB50B
- * Vapor recovery valve. Art. 601000S / 602000S
- * Overfill sensor

DN500 Clamped Manhole cover for fuel and by-products



| Nº | DESCRIPTION. |
|----|----------------------------------|
| 1 | Manhole cover. |
| 2 | Collar ring |
| 3 | 10" PAF Cover Calib: 300±35 mbar |
| 4 | Quick closing system. |
| 5 | Clamp |
| 6 | Collar ring gasket. |
| 7 | Pressure relieve cap |
| 8 | 1 1/4" internal safety valve |
| 9 | Fixing mechanism |

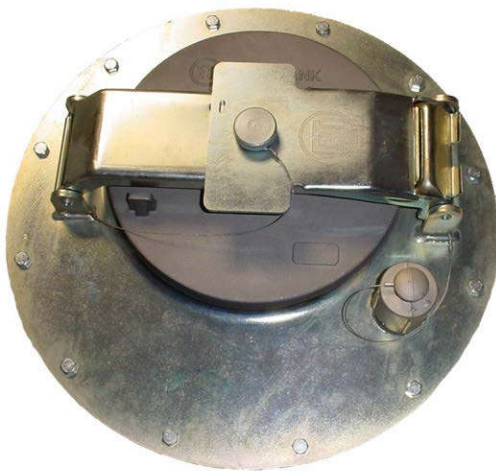
Materials:

A-430-B treated steel, 4 mm / 6 mm thickness

AISI-304 stainless steel, 4 mm thickness (under request)

AW5186 aluminium 6 mm / 8 mm thickness (under request)

DN400 Bolted Manhole cover for fuel and by-products



EQUIPTANK's PAF type DN400 Manhole covers, for fuel and by-product transportation, are design and manufactured following the highest international quality standards. The manhole cover is fixed to the collar ring by means of 12 steel screws (could be stainless steel).

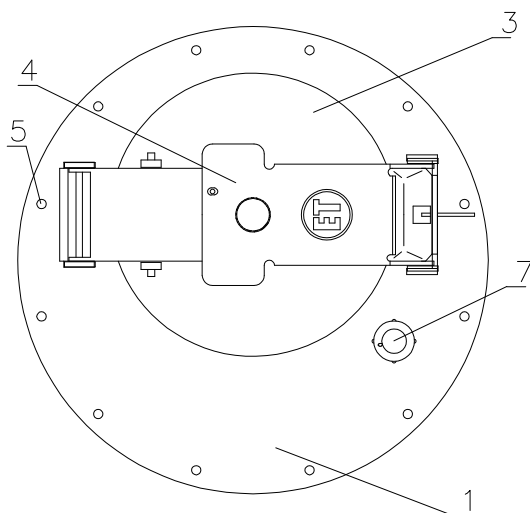
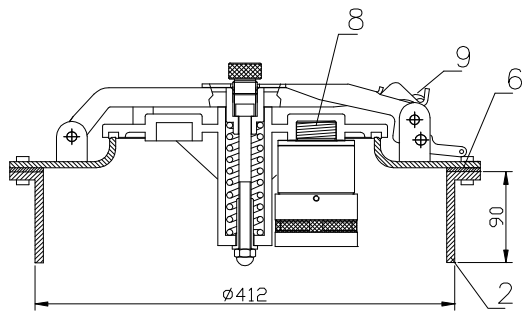
The DN 10" loading mouth doubles as a safety valve calibrated to an opening pressure of 30kPa, or optionally to 50 kPa (other calibrations under request)

As an option, a secondary block for the closing system of the loading mouth can be supplied.

The Manhole cover can incorporate the following elements:

- * Internal safety valve Art. VSRI5014. Complies with UNE EN 14595 regulations. BVQI-E certified with certificate N° 5000661-J2-CPI.
- * Pressure relieve cap Art. 100100.
- * Cover bridge lock (closing system).
- * Vapor recovery valve Art. 602000S.
- * Overfill sensor

DN400 Bolted Manhole cover for fuel and by-products



| Nº | DESCRIPTION. |
|----|----------------------------------|
| 1 | Manhole cover. |
| 2 | Drilled collar ring (12xM8) |
| 3 | 10" PAF Cover Calib: 300±35 mbar |
| 4 | Quick closing system. |
| 5 | Screws (12). |
| 6 | Collar ring gasket. |
| 7 | Pressure relieve cap |
| 8 | 1 1/4" internal safety valve |
| 9 | Fixing mechanism |

Materials:

A-430-B treated steel, 4 mm / 6 mm thickness

AISI-304 stainless steel, 4 mm thickness (under request)

AW5186 aluminium 6 mm.

DN400 Clamped Manhole cover for fuel and by-products



Equiptank's PAF type DN400 Manhole covers, for fuel and by-product transportation, are design and manufactured following the highest international quality standards.

The cover is fixed to the collar ring by means of a steel clamp.

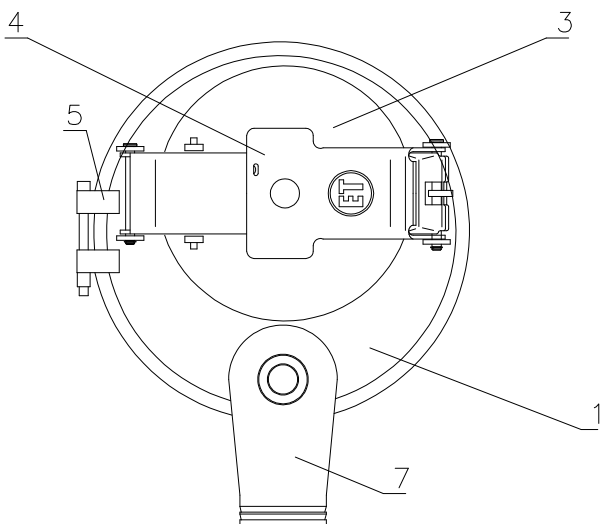
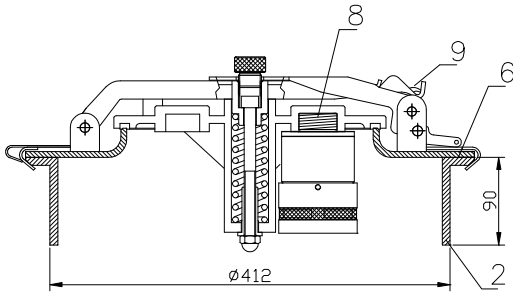
The DN 10" loading mouth doubles as a safety valve calibrated to an opening pressure of 30kPa, or optionally to 50 kPa (other calibrations under request)

As an option, a secondary block for the closing system of the loading mouth can be supplied.

The Manhole cover can incorporate the following elements:

- * Internal safety valve Art. VSRI5014. Complies with UNE EN 14595 regulations. BVQI-E certified with certificate N° 5000661-J2-CPI.
- * Pressure relieve cap Art. 100100.
- * Cover bridge lock (closing system).
- * Vapor recovery valve Art. 602000S
- * Overfill sensor

DN400 Clamped Manhole cover for fuel and by-products



| N° | DESCRIPTION. |
|----|----------------------------------|
| 1 | Manhole cover. |
| 2 | Collar ring |
| 3 | 10" PAF cover Calib: 300±35 mbar |
| 4 | Quick closing system. |
| 5 | Clamp |
| 6 | Collar ring gasket. |
| 7 | Vapor recovery valve |
| 8 | 1 1/4" internal safety valve |
| 9 | Fixing mechanism |

Materials:

A-430-B treated steel, 4 mm / 6 mm thickness
 AISI-304 stainless steel, 4 mm thickness (under request).

Manhole covers for fuel and by-products

EXAMPLE E 5 A 6 S S 0 E 0 N

PRODUCTO FAMILY

E = Bolted Manhole cover
T = Clamped Manhole cover

DIAMETER

4 = Nominal diameter 400mm (16")
5 = Nominal diameter 500mm (20")

MATERIAL

A = Aluminium
F = Iron
I = Stainless steel

THICKNESS

4 = 4 mm
6 = 6 mm
8 = 8 mm

OVERFILL SENSOR HOUSING

S = With overfill sensor housing
0 = Without overfill sensor housing

VAPOR RECOVERY VALVE HOUSING

S = With vapor recovery valve 601000S housing
A = With vapor recovery valve 602000S housing
0 = Without vapor recovery valve housing

INTERNAL SAFETY VALVE HOUSING

I = With internal safety valve VSRI5014 housing
F = With internal safety valve 450000 housing
0 = Without internal safety valve housing

EXTERNAL SAFETY VALVE HOUSING

E = With external safety valve VSB50B housing
R = With external safety valve 401100 housing
L = With external safety valve 460000 housing
0 = Without external safety valve housing

PRESSURE RELIEVE CAP

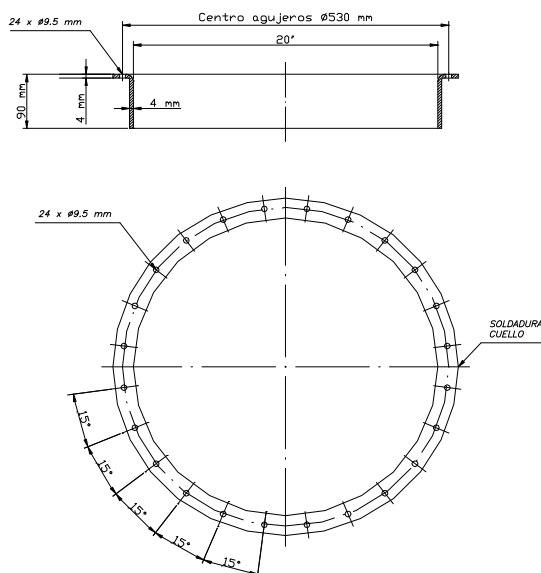
T = With pressure relieve cap housing
0 = Without pressure relieve cap housing

GASKET

N = Nitrile (NBR)
V = Fluoroelastomer ("Vitón")
E = EPDM
B = Low temperature

EQUIPTANK's Manhole cover collar rings

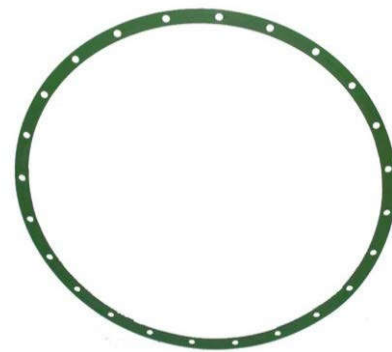
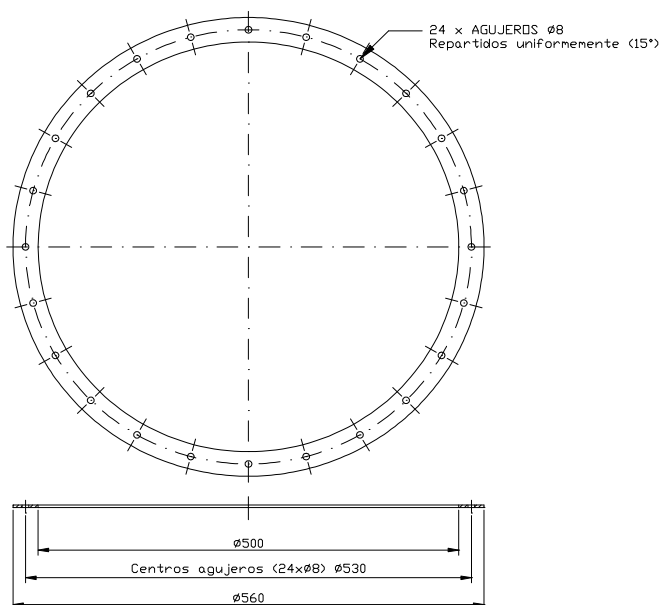
| Art. | Thickness | Material | Type | DN |
|---------|-----------|----------------|---------|-----|
| 100002 | 8 mm | Aluminium | Clamped | 400 |
| 140002 | 6 mm | Aluminium | Clamped | 500 |
| 140002H | 4 mm | Steel | Bolted | 500 |
| 140002I | 4 mm | Stainles Steel | Bolted | 500 |
| 160002 | 8 mm | Aluminium | Bolted | 500 |
| 160002H | 6 mm | Steel | Bolted | 500 |
| 170002 | 8 mm | Aluminium | Bolted | 400 |
| 17005H | 4 mm | Steel | Bolted | 400 |
| 170006H | 4 mm | Steel | Clamped | 400 |
| 180002 | 8 mm | Aluminium | Bolted | 600 |



Art. 160002H
6mm steel bolted collar ring
 Weight: 6 kg

EQUIPTANK's Manhole cover gaskets

| Art. | Material | Type | DN |
|-----------|----------|---------|-----|
| 100012 | NBR | Clamped | 500 |
| 100012A | EPDM | Clamped | 500 |
| 160012S3 | NBR | Bolted | 500 |
| 160012S3V | VITON | Bolted | 500 |
| 170011N | NBR | Clamped | 400 |
| 170011V | VITON | Clamped | 400 |
| 170012 | NBR | Bolted | 400 |
| 170012S2V | VITON | Bolted | 400 |
| 180012 | NBR | Bolted | 600 |



Art. 160012S3V
“Vitón” Collar ring gasket
 Weight: 0,18 kg

Bolted collar ring gasket

Art. 160012S3

Assembly instructions for gasket Art. 160012S3:



The bolted collar ring gasket, Article 160012S3 has an assembly position. The conic relief of each hole can clearly be seen in the picture.

The side with the conic relief has to be assembled over the top side of the collar ring, as seen in the picture.



Once the gasket is firmly set on the collar ring, EQUIPTANK's DN500 manhole cover is placed, and the 24 steel bolts tightened in a symmetrical way in order to obtain a safe set up of the gasket.

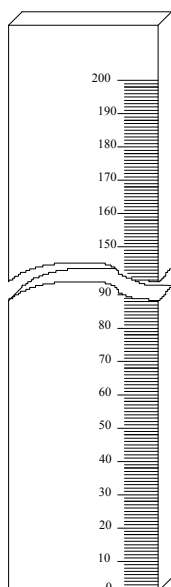
Dip stick tube

Art. 100117 / 100122

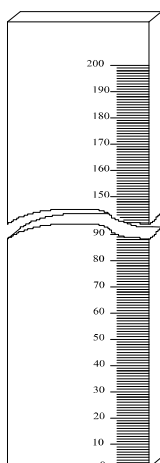


| Article | Description |
|------------------------------|--|
| 100117 | Aluminium dip stick tube 1700 mm lenght. |
| 100122 | Aluminium dip stick tube 2200 mm length. |
| Other lenghts under request. | |

Graph level dipstick



| Article | Description |
|---------------------------------|---|
| C302000 | Brass level dipstick calibrated 2000 mm |
| C302200 | Brass level dipstick calibrated 2200 mm |
| Other dimensions under request. | |



| Article | Description |
|---------------------------------|---|
| C302000I | Stainless steel level dipstick calibrated 2000 mm |
| C302200I | Stainless steel level dipstick calibrated 2200 mm |
| Other dimensions under request. | |

5 effect Safety Valve

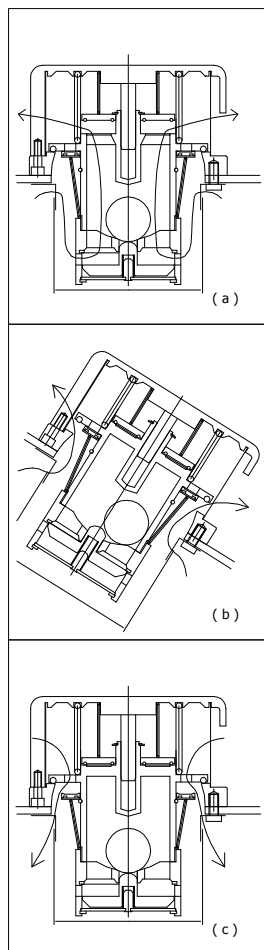
Art. 401100



Complies with specifications of **Order number 24340** of October 16th 1996 of the Ministry of Industry and Energy.
Complies with specifications of **norm NFM 88-111**.

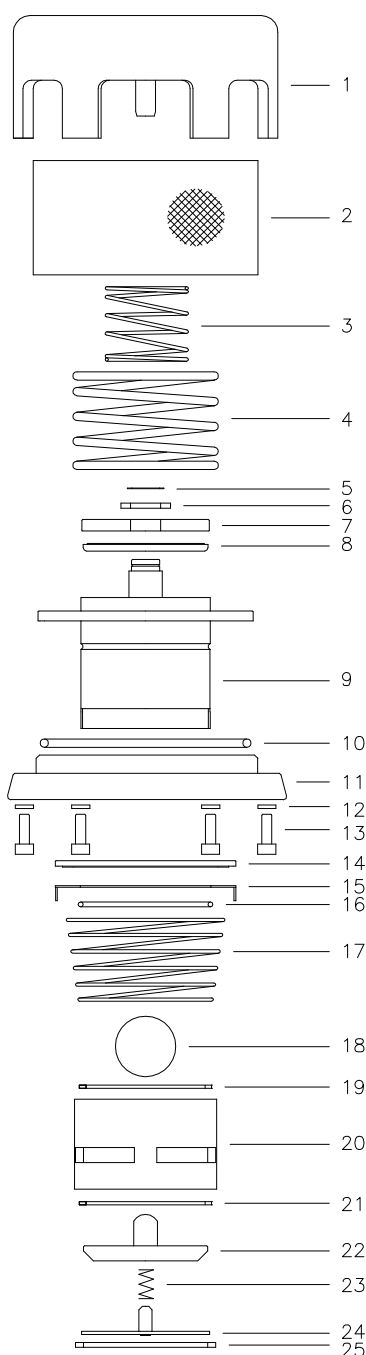
Weight: 2,9 Kg

- Aeration: (a) 55-90 mbar (5.5-9 kPa)
- Pressure: (b) 220-275 mbar (22-27.5 kPa)
- Overturn angle: (b) 27°-37°
- Vacuum: (c) 10-15 mbar (1-1.5 kPa)
- Flame arrester mesh in stainless steel



5 effect Safety Valve

Art. 401100



| Fig. | Qty. | Description | Art. |
|------|------|---------------------------|----------|
| 1 | 1 | Hood | 401002 |
| 2 | 1 | Flame arrester | 400045 |
| 3 | 1 | Low pressure spring | 401022 |
| 4 | 1 | Long high pressure spring | 401024 |
| 5 | 1 | Seeger washer | 400088 |
| 6 | 1 | Washer | 400087 |
| 7 | 1 | Low pressure disc | 400055 |
| 8 | 1 | Low pressure gasket | 400050 |
| 9 | 1 | Body | 401001 |
| 10 | 1 | High pressure body gasket | 400026 |
| 11 | 1 | Flange | 401105 |
| 12 | 6 | Screw head gasket | 401181 |
| 13 | 6 | Hood fixing screw | 400080 |
| 14 | 1 | Vacuum gasket | 400031 |
| 15 | 1 | Vacuum gasket disc | 400040V2 |
| 16 | 1 | Seal ring | 400033 |
| 17 | 1 | Vacuum spring | 400020 |
| 18 | 1 | Ball | 400018 |
| 19 | 1 | Body gasket | 400035 |
| 20 | 1 | Overturn body | 400004 |
| 21 | 1 | Overturn clapper gasket | 400030 |
| 22 | 1 | Overturn clapper | 400010 |
| 23 | 1 | Overturn clapper spring | 400023 |
| 24 | 1 | Low lid disc | 400015 |
| 25 | 1 | Low lid seeger disc | 400025 |

ACCESSORIES:

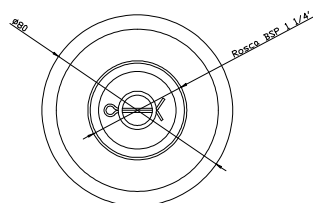
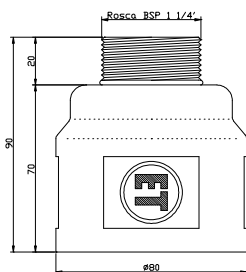
| | |
|---------------------|-------------|
| Flange flat gasket | Art. 400029 |
| Flange gasket | Art. 401129 |
| Blind flange | Art. 400092 |
| Anti wave deflector | Art. 400090 |

1 1/4" INTERNAL SAFETY VALVE

Art. 450000



Weight: 0,55 Kg



CHARACTERISTICS:

Complies with specifications of NFM 88-111 regulation.

Internally fitted.

1 ¼ BSP thread.

MATERIALS:

Body in treated lightweight aluminium alloy.

Springs and components in stainless steel and treated steel.

Gaskets in fluoroelastomer.

FUNCTIONS:

Aeration: 55-90 mbar (5.5-9 kPa)

Pressure: 220-275 mbar (22-27.5 kPa)

Overturm angle: 27°-37°

Vacuum: 10-15 mbar (1-1.5 kPa)

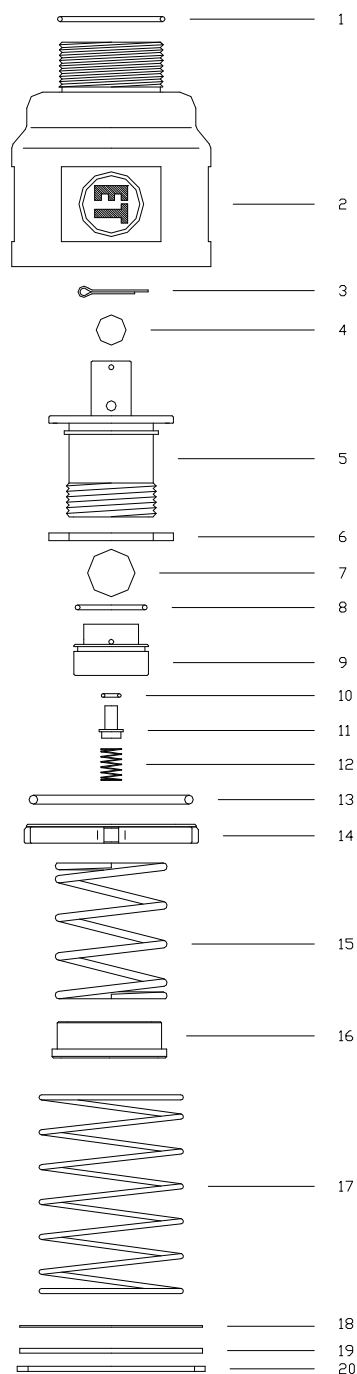
Flame arrester mesh.

Other pressures under request.



1 1/4" Internal Safety Valve

Art. 450000



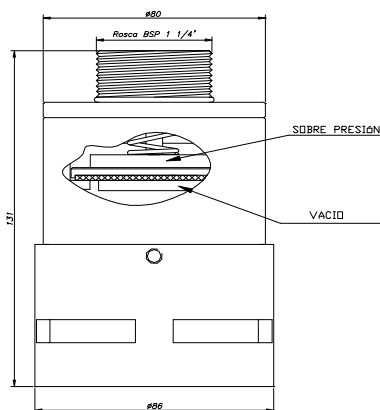
| Fig. | Qty. | Description | Art. |
|------|------|----------------------|--------|
| 1 | 1 | 1 1/4" thread gasket | 450076 |
| 2 | 1 | Body | 450001 |
| 3 | 1 | Cotter pin | 450080 |
| 4 | 1 | Low pressure ball | 450060 |
| 5 | 1 | Internal body | 450005 |
| 6 | 1 | High pressure gasket | 450072 |
| 7 | 1 | Overturn ball | 450055 |
| 8 | 1 | Ball housing gasket | 450073 |
| 9 | 1 | Ball housing body | 450015 |
| 10 | 1 | Overturn gasket | 450070 |
| 11 | 1 | Overturn clapper | 450050 |
| 12 | 1 | Overturn spring | 450065 |
| 13 | 1 | Vacuum gasket | 450071 |
| 14 | 1 | Gasket case | 450020 |
| 15 | 1 | High pressure spring | 450067 |
| 16 | 1 | Internal body lid | 450010 |
| 17 | 1 | Vacuum spring | 450071 |
| 18 | 1 | Flame arrester | 450030 |
| 19 | 1 | Valve lid | 450025 |
| 20 | 1 | Valve lid ring | 450085 |

1 1/4" Internal Safety Valve

Art. VSRI5014



Weight: 1,8 Kg



CHARACTERISTICS:

Complies with UNE EN 14595 regulation.
BVQI-E certified with certificate N°
5000661-J2-CPI.

The valve is fitted in the 10" PAF cover
(internally).

MATERIALS:

Body and components in treated and
anodized lightweight aluminium alloy.

Springs and components in stainless steel
and treated steel

Gaskets in fluoroelastomer.

Pre-established pressures.

FUNCTIONS:

Pressure relieve.

Vacuum.

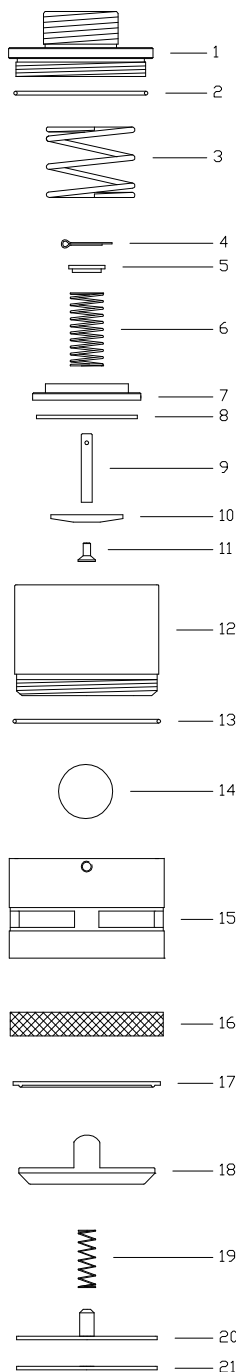
Flame arrester.

Overturn.



1 1/4" Internal Safety Valve

Art. VSRI5014



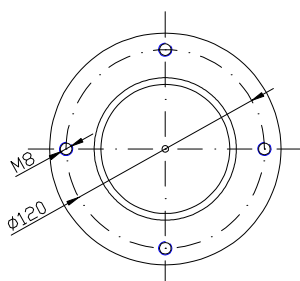
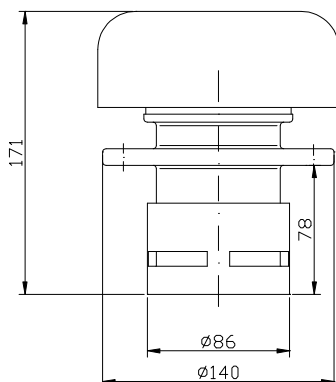
| Fig. | Qty. | Description | Art. |
|------|------|-------------------------|----------|
| 1 | 1 | 1 1/4" threaded lid | 480002 |
| 2 | 1 | Threaded lid gasket | 480053 |
| 3 | 1 | Pressure spring | 480020 |
| 4 | 1 | Cotter pin | 480030 |
| 5 | 1 | Vacuum washer | 480016 |
| 6 | 1 | Vacuum spring | 480021 |
| 7 | 1 | Closing saucer | 480010V2 |
| 8 | 1 | Closing gasket | 480054 |
| 9 | 1 | Saucer axle | 470015 |
| 10 | 1 | Vacuum saucer | 480011 |
| 11 | 1 | Disc fixing screw | 480031 |
| 12 | 1 | Body | 480001 |
| 13 | 1 | Body gasket | 400035 |
| 14 | 1 | Ball | 400018 |
| 15 | 1 | Overturn body | 400004 |
| 16 | 1 | Flame arrester | 480090 |
| 17 | 1 | Overturn clapper gasket | 400030 |
| 18 | 1 | Overturn clapper | 400010 |
| 19 | 1 | Overturn clapper spring | 400023 |
| 20 | 1 | Lower lid disc | 400015 |
| 21 | 1 | Lower lid seeger disc | 400025 |

2" External Safety Valve

Art. VSB50B



Weight: 1,85 Kg



CHARACTERISTICS:

Complies with UNE EN 14595 regulation.

BVQI-E certified with certificate N° 5000661-J1-CPI.

MATERIALS:

Body and components in treated and anodized lightweight aluminium alloy.

Springs and components in stainless steel and treated steel

Gaskets in fluoroelastomer.

Pre-established pressures.

The valve is flanged to the cover.

FUNCTIONS:

Pressure relieve.

Vacuum.

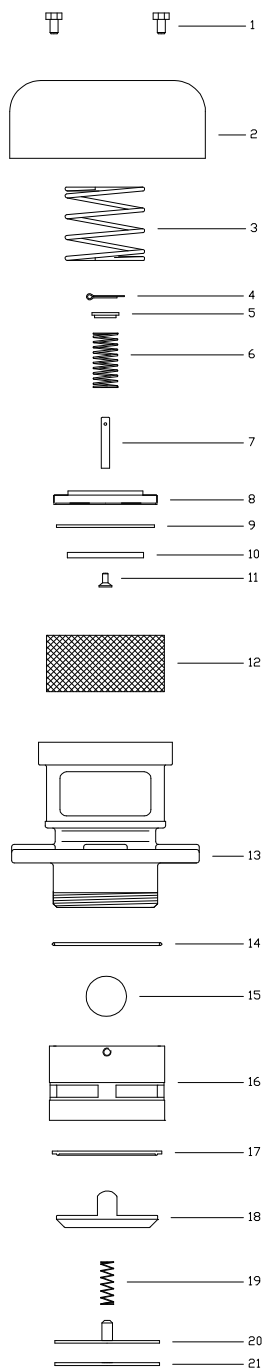
Flame arrester.

Overturn.



2" External Safety Valve

Art. VSB50B



| Fig. | Qty. | Description | Art. |
|------|------|-------------------------|--------|
| 1 | 4 | Hood fixing screw | 470051 |
| 2 | 1 | Hood | 650005 |
| 3 | 1 | Pressure spring | 470020 |
| 4 | 1 | Cotter pin | 480030 |
| 5 | 1 | Vacuum washer | 480016 |
| 6 | 1 | Vacuum spring | 480021 |
| 7 | 1 | Closing saucer | 470010 |
| 8 | 1 | Closing gasket | 470030 |
| 9 | 1 | Saucer axle | 470015 |
| 10 | 1 | Vacuum saucer | 470011 |
| 11 | 1 | Disc fixing screw | 480031 |
| 12 | 1 | Flame arrester | 470040 |
| 13 | 1 | Body | 470001 |
| 14 | 1 | Body gasket | 400035 |
| 15 | 1 | Ball | 400018 |
| 16 | 1 | Overturn body | 400004 |
| 17 | 1 | Overturn clapper gasket | 400030 |
| 18 | 1 | Overturn clapper | 400010 |
| 19 | 1 | Overturn clapper spring | 400023 |
| 20 | 1 | Lower lid disc | 400015 |
| 21 | 1 | Lower lid seeger disc | 400025 |



ACCESSORIES:

Flat flange gasket Art. 470035

3" sequential pneumatic vapor recovery valve" Art. 601000S



CHARACTERISTICS:

Complies with EN 13082 regulation.
BVQI-E certified with certificate N° 5000661-B-CPI.

Pneumatically activated

Incorporates a sequential opening and return switch to feed an operative valve in the system.

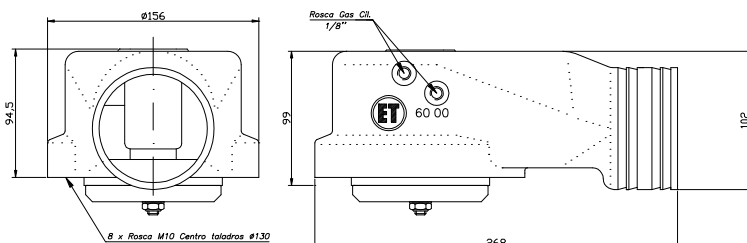
Body pressure tested at 500 KPa



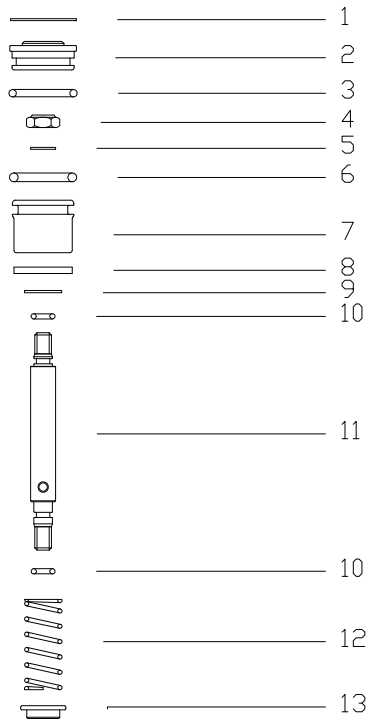
MATERIALS:

Body and componentes in treated and anodized lightweight aluminium alloys.
Internal components in stainless steel.
Gaskets in fluoroelastomer / Nitrile.

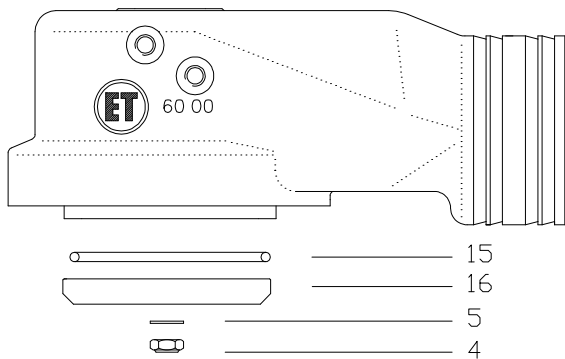
Weight: 2,15 Kg



3" Sequential pneumatic vapor recovery valve Art. 601000S



| Fig. | Qty. | Description | Art. |
|------|------|--------------------------|--------|
| 1 | 1 | Seeger butt | 600051 |
| 2 | 1 | Butt | 600017 |
| 3 | 1 | Butt gasket | 600042 |
| 4 | 2 | Self locking nut | 600055 |
| 5 | 2 | Self locking nut washer | 600032 |
| 6 | 1 | Sequential piston o-ring | 600044 |
| 7 | 1 | Sequential piston | 600047 |
| 8 | 1 | Piston flat gasket | 600048 |
| 9 | 1 | Flat gasket washer | 600034 |
| 10 | 2 | Axle gasket | 600041 |
| 11 | 1 | Sequential piston axle | 600011 |
| 12 | 1 | Spring | 600025 |
| 13 | 1 | Housing guide | 600020 |
| 14 | 1 | Body | 601001 |
| 15 | 1 | Closing gasket | 600040 |
| 16 | 1 | Closing saucer | 600005 |



| ACCESSORIES | |
|--------------------|-------------|
| Flange flat gasket | Art. 600043 |
| Flange gasket | Art. 601043 |
| Blind flange | Art. 600090 |

3" Sequential pneumatic vapor recovery valve with mesh Art. 601100S



CHARACTERISTICS:

Complies with EN 13082 regulation.
BVQI-E certified with certificate N° 5000661-B-CPI.

Pneumatically activated

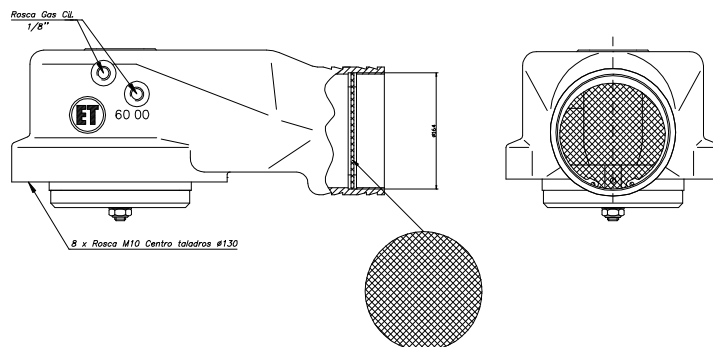
Incorporates a sequential opening and return switch to feed an operative valve in the system.

Body pressure tested at 500 KPa

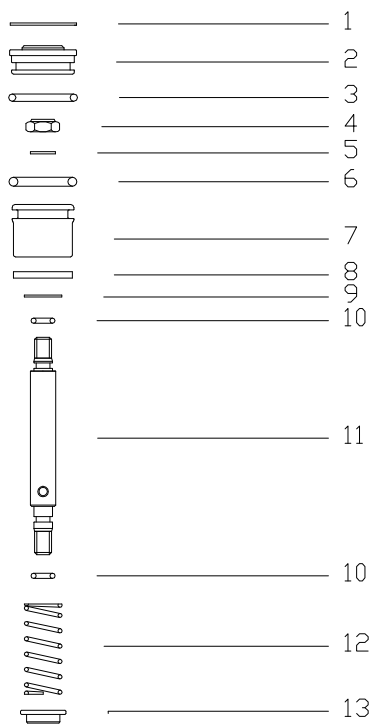
MATERIALS:

Body and componentes in treated and anodized lightweight aluminium alloys.
Internal components in stainless steel.
Gaskets in fluoroelastomer / Nitrile.

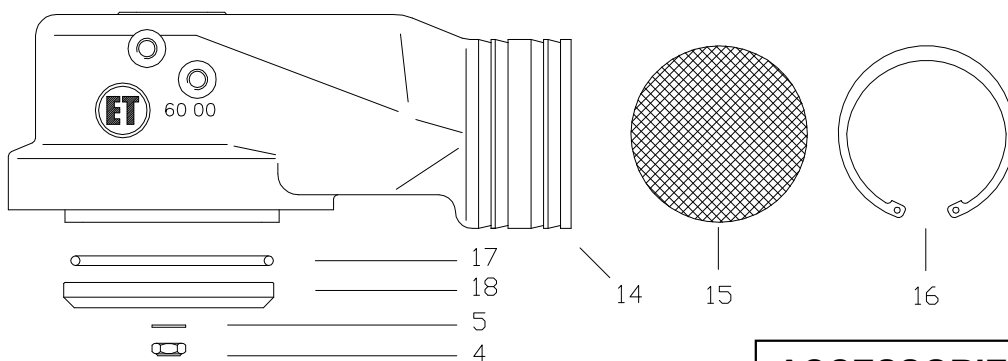
Weight: 2,15 Kg



3" Sequential pneumatic vapor recovery valve with mesh Art. 601100S



| Fig | Qty. | Description | Art. |
|-----|------|--------------------------|--------|
| 1 | 1 | Seeger butt | 600051 |
| 2 | 1 | Butt | 600017 |
| 3 | 1 | Butt gasket | 600042 |
| 4 | 2 | Self locking nut | 600055 |
| 5 | 2 | Self locking nut washer | 600032 |
| 6 | 1 | Sequential piston o-ring | 600044 |
| 7 | 1 | Sequential piston | 600047 |
| 8 | 1 | Piston flat gasket | 600048 |
| 9 | 1 | Flat gasket washer | 600034 |
| 10 | 2 | Axle gasket | 600041 |
| 11 | 1 | Sequential piston axle | 600011 |
| 12 | 1 | Spring | 600025 |
| 13 | 1 | Housing guide | 600020 |
| 14 | 1 | Body | 601001 |
| 15 | 1 | Flame arrester | 601106 |
| 16 | 1 | Seeger flame arrester | 601107 |
| 17 | 1 | Closing gasket | 600040 |
| 18 | 1 | Closing saucer | 600005 |



ACCESSORIES

| | |
|--------------------|-------------|
| Flange flat gasket | Art. 600043 |
| Flange gasket | Art. 601043 |
| Blind flange | Art. 600090 |

3" Sequential pneumatic vapor recovery valve with decompression Art. 601500S



Weight: 2,20 Kg

CHARACTERISTICS:

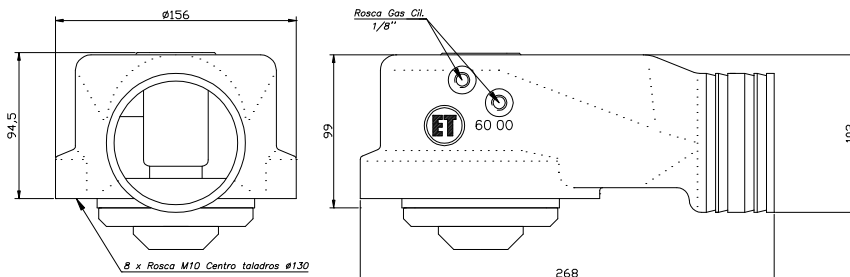
Complies with EN 13082 regulation.
BVQI-E certified with certificate N° 5000661-B-CPI.

Pneumatically activated
Incorporates a sequential opening and return switch to feed an operative valve in the system.

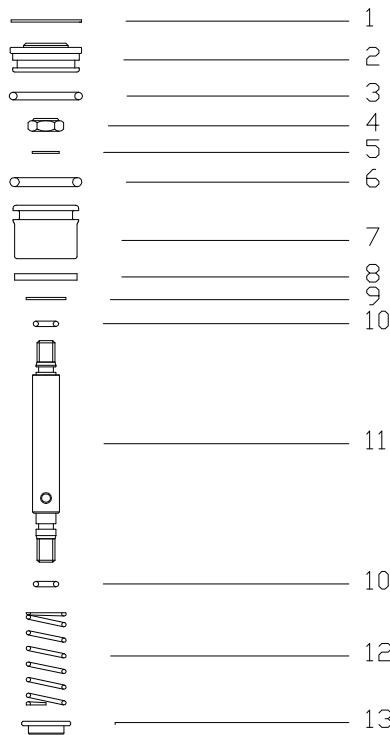
Body pressure tested at 500 KPa
Decompression saucer.

MATERIALS:

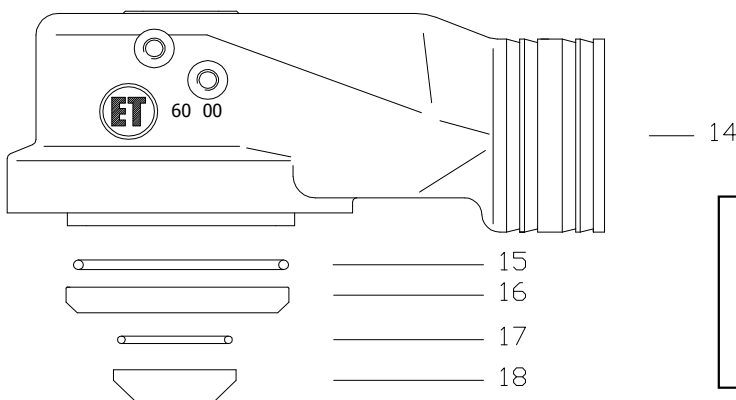
Body and componentes in treated and anodized lightweight aluminium alloys.
Internal components in stainless steel.
Gaskets in fluoroelastomer / Nitrile.



3" Sequential pneumatic vapor recovery valve with decompression Art. 601500S



| Fig. | Qty. | Description | Art, |
|------|------|--------------------------|--------|
| 1 | 1 | Seeger butt | 600051 |
| 2 | 1 | Butt | 600017 |
| 3 | 1 | Butt gasket | 600042 |
| 4 | 1 | Self locking nut | 600055 |
| 5 | 1 | Self locking nut washer | 600032 |
| 6 | 1 | Sequential piston o-ring | 600044 |
| 7 | 1 | Sequential piston | 600047 |
| 8 | 1 | Piston flat gasket | 600048 |
| 9 | 1 | Flat gasket washer | 600034 |
| 10 | 2 | Axle gasket | 600041 |
| 11 | 1 | Decompression axle | 600511 |
| 12 | 1 | Spring | 600025 |
| 13 | 1 | Housing guide | 600020 |
| 14 | 1 | Body | 601001 |
| 15 | 1 | Clsing gasket | 600040 |
| 16 | 1 | Decompression saucer | 600505 |
| 17 | 1 | Decompression gasket | 600570 |
| 18 | 1 | Decompression clapper | 600506 |



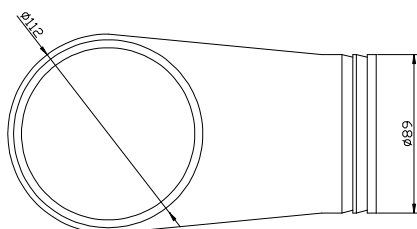
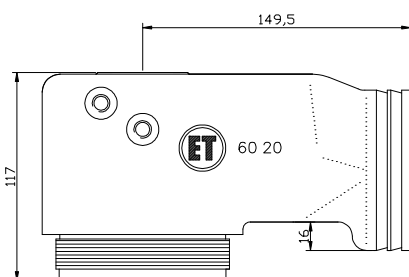
ACCESSORIES

| | |
|--------------------|-------------|
| Flange flat gasket | Art. 600043 |
| Flange gasket | Art. 601043 |
| Blind flange | Art. 600090 |

3" Sequential pneumatic vapor recovery valve Art. 602000S



Weight: 1,65Kg



CHARACTERISTICS:

Pneumatic command

Incorporates a sequential opening and return switch to feed an operative valve in the system.

Body pressure test at 500 KPa.

Of easy fixing to EQUIPTANK's manhole cover.

MATERIALS:

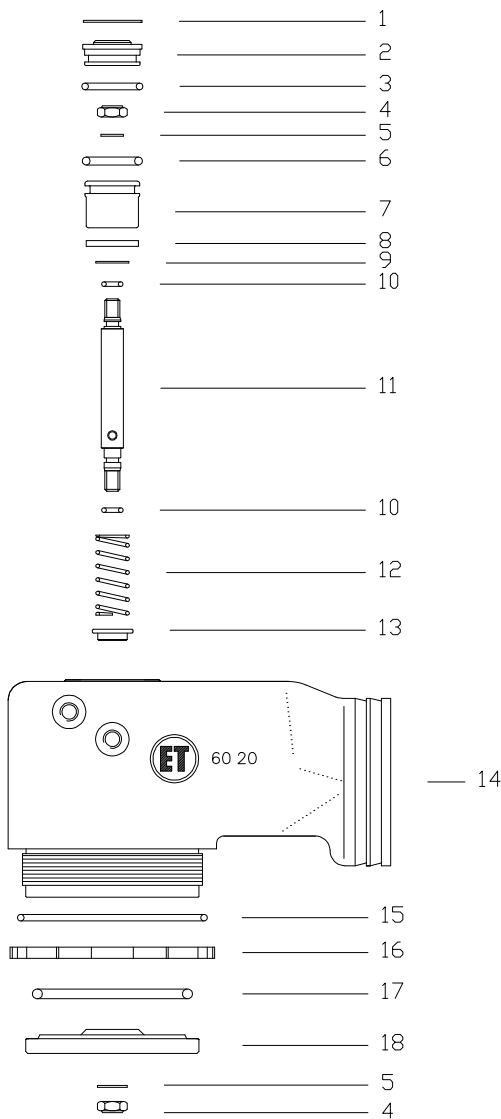
Body and components in aluminium alloy, treated and anodized.

Internal components in stainless steel.

Gaskets in fluoroelastomer / Nitrile.



3" Sequential pneumatic vapor recovery valve Art. 602000S



| Fig. | Qty. | Description | Art. |
|------|------|--------------------------|--------|
| 1 | 1 | Seeger butt | 600051 |
| 2 | 1 | Butt | 600017 |
| 3 | 1 | Butt gasket | 600042 |
| 4 | 2 | Self locking nut | 600055 |
| 5 | 2 | Self locking nut washer | 600032 |
| 6 | 1 | Sequential piston o-ring | 600044 |
| 7 | 1 | Sequential piston | 600047 |
| 8 | 1 | Piston flat gasket | 600048 |
| 9 | 1 | Flat gasket washer | 600034 |
| 10 | 2 | Axle gasket | 600041 |
| 11 | 1 | Sequential piston axle | 650011 |
| 12 | 1 | Spring | 600025 |
| 13 | 1 | Housing guide | 600020 |
| 14 | 1 | Body | 602001 |
| 15 | 1 | Body gasket | 602009 |
| 16 | 1 | Fixing nut | 602008 |
| 17 | 1 | Closing gasket | 602010 |
| 18 | 1 | Closing saucer | 602005 |

VAPOR HOSE SLEEVE 90x110x150 NBR

Art. 600087N

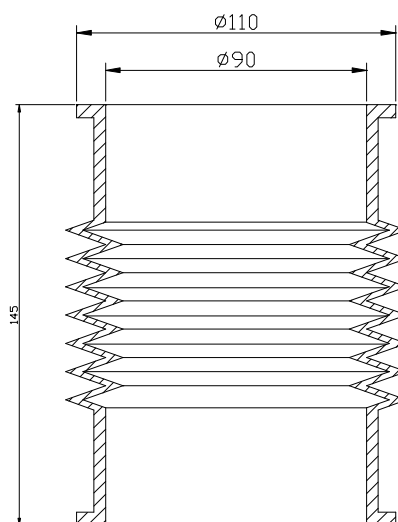
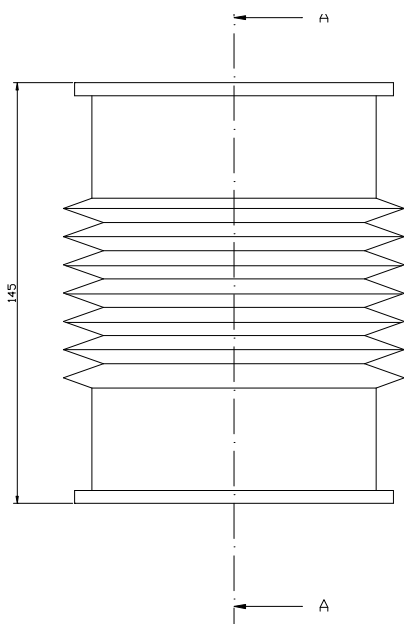


Molded vapor hose, manufactured with high content NBR.

Designed to connect the vapor recovery valves to the vapor pipe (or collector).

ACCESORIES:

Art. 600088 Clip



SECCI6N A-A

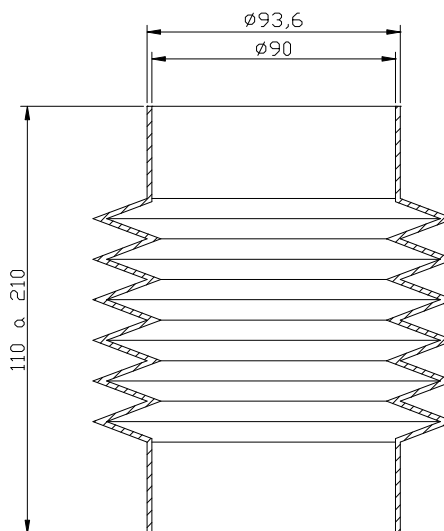
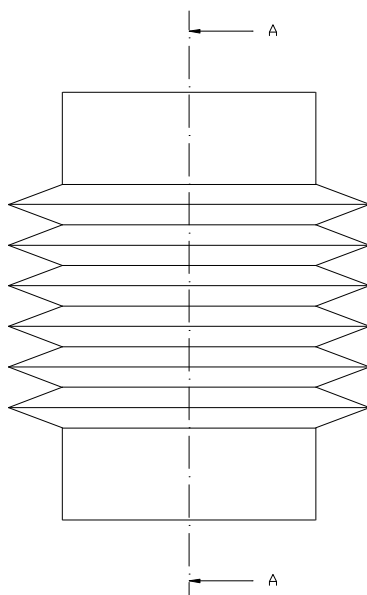
HOSE SLEEVE Art. HC90X170N



Molded vapor hose, manufactured with high content NBR.

Designed to connect the vapor recovery valves to the vapor pipe (or collector).

ACCESORIES:
Art. 600088 Clip



SECCIÓN A-A

3" DN80 Support Valve

Art. 651000



Weight: 1,65 Kg

CHARACTERISTICS:

Complies with specification of order number 24340 of October 16th 1996 of the Ministry of Industry and Energy.

Pneumatic command.

Can be mounted vertically or horizontally.

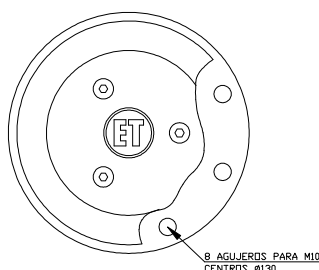
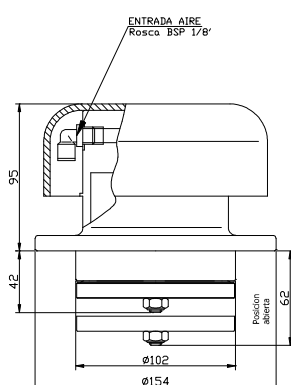
Body pressure tested at 500 KPa.

MATERIALS:

Body and components in treated lightweight aluminium alloy.

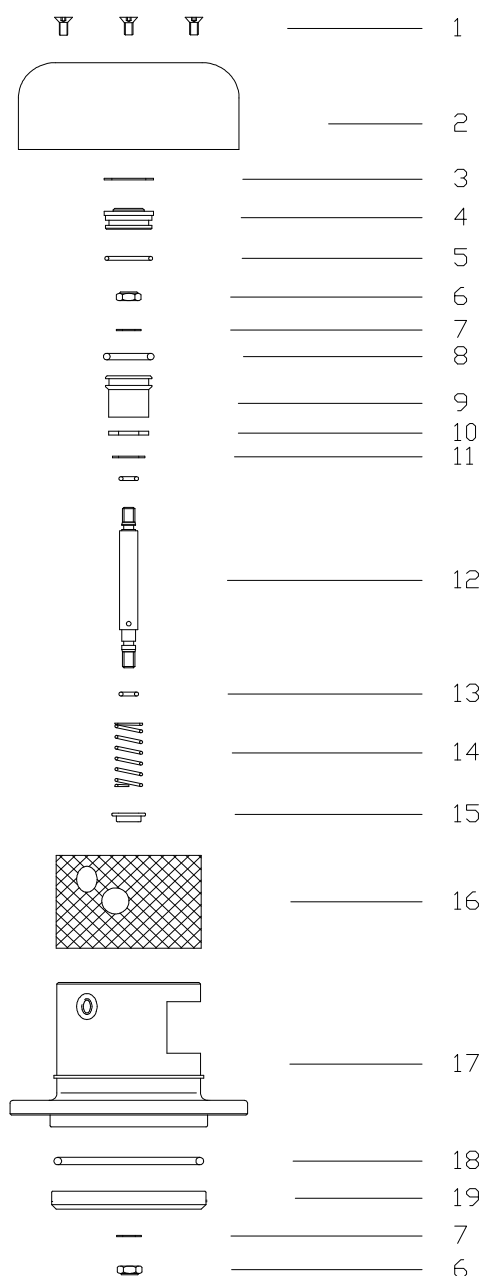
Axle and spring in stainless steel.

Gaskets in fluoroelastomer / Nitrile.



3" DN80 Support Valve

Art. 651000



| Fig. | Qty. | Description | Art. |
|------|------|--------------------------|--------|
| 1 | 3 | Screw | 650008 |
| 2 | 1 | Protection hood | 650005 |
| 3 | 1 | Seeger butt | 600051 |
| 4 | 1 | Butt | 600017 |
| 5 | 1 | Butt gasket | 600042 |
| 6 | 2 | Self locking nut | 600055 |
| 7 | 2 | Self locking nut washer | 600032 |
| 8 | 1 | Sequential piston o-ring | 600044 |
| 9 | 1 | Sequential piston | 600047 |
| 10 | 1 | Piston flat gasket | 600048 |
| 11 | 1 | Flat gasket washer | 600034 |
| 12 | 2 | Axle gasket | 600041 |
| 13 | 1 | Sequential piston axle | 650011 |
| 14 | 1 | Spring | 600025 |
| 15 | 1 | Housing guide | 600020 |
| 16 | 1 | Flame arrester | 650070 |
| 17 | 1 | Body | 650001 |
| 18 | 1 | Junta cierre | 600040 |
| 19 | 1 | Platillo cierre | 600005 |

ACCESSORIES

Flange gasket Art. 650091
 Flange Art. 650090

3" DN80 Sequential Support Valve

Art. 652000



CHARACTERISTICS:

Complies with specification of order number 24340 of October 16th 1996 of the Ministry of Industry and Energy.

Pneumatic command.

Can be mounted vertically or horizontally.

Body pressure tested at 500 KPa.

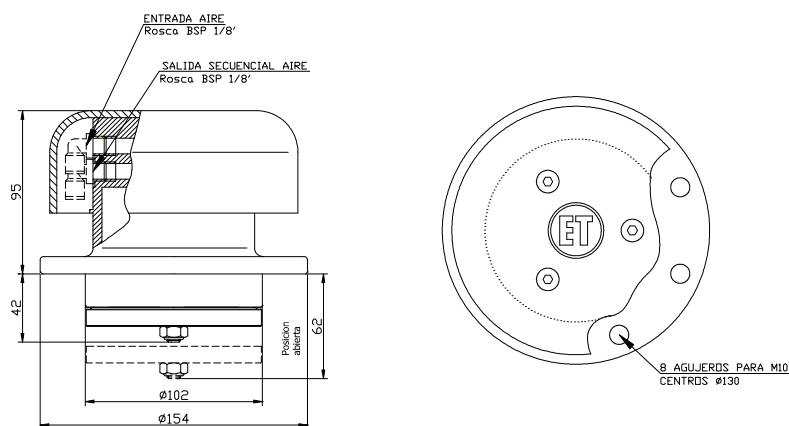
MATERIALS:

Body and components in treated lightweight aluminium alloy.

Axle and spring in stainless steel.

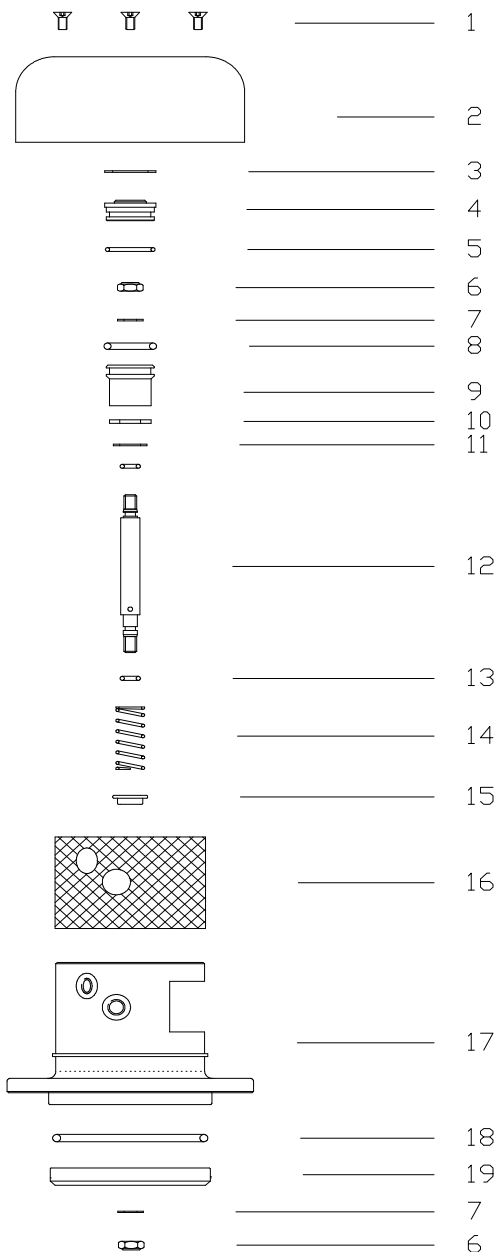
Gaskets in fluoroelastomer / Nitrile.

Weight: 1,65 Kg



3" DN80 Sequential Support Valve

Art. 652000



| Fig. | Qty. | Description | Art. |
|------|------|--------------------------|--------|
| 1 | 3 | Screw | 650008 |
| 2 | 1 | Proteccion hood | 650005 |
| 3 | 1 | Seeger butt | 600051 |
| 4 | 1 | Butt | 600017 |
| 5 | 1 | Butt gasket | 600042 |
| 6 | 2 | Self locking nut | 600055 |
| 7 | 2 | Self locking nut washer | 600032 |
| 8 | 1 | Sequential piston o-ring | 600044 |
| 9 | 1 | Sequential piston | 600047 |
| 10 | 1 | Piston flat gasket | 600048 |
| 11 | 1 | Flat gasket washer | 600034 |
| 12 | 2 | Axle gasket | 600041 |
| 13 | 1 | Sequential piston axle | 650011 |
| 14 | 1 | Spring | 600025 |
| 15 | 1 | Housing guide | 600020 |
| 16 | 1 | Flame arrester | 650070 |
| 17 | 1 | Body | 650001 |
| 18 | 1 | Closing gasket | 600040 |
| 19 | 1 | Closing saucer | 600005 |

ACCESSORIES

| | |
|---------------|-------------|
| Flange gasket | Art. 650091 |
| Flange | Art. 650090 |

3" DN80 Support valve normally open

Art. 653000



Weight: 1,65 Kg

CHARACTERISTICS:

Complies with specification of order number 24340 of October 16th 1996 of the Ministry of Industry and Energy.

Sequential pneumatic command.

Can be mounted vertically or horizontally.

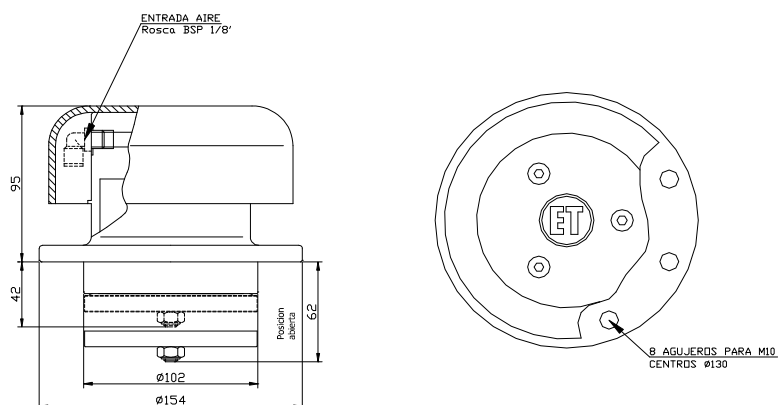
Body pressure tested at 500 KPa.

MATERIALS:

Body and components in treated lightweight aluminium alloy.

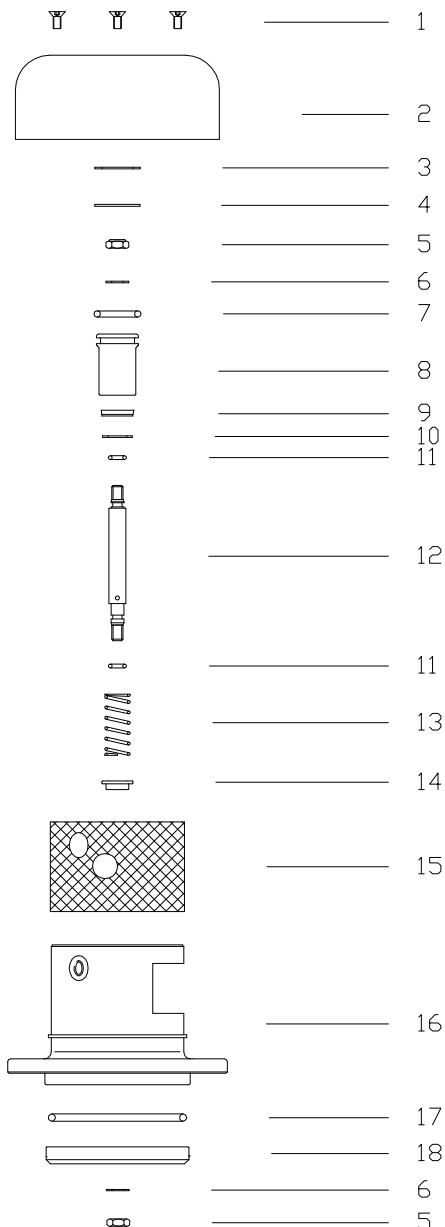
Axle and spring in stainless steel.

Gaskets in fluoroelastomer / Nitrile.



3" DN80 Support valve normally open

Art. 653000



| Fig. | Qty. | Description | Art. |
|------|------|--------------------------|--------|
| 1 | 3 | Screw | 650008 |
| 2 | 1 | Protection hood | 650005 |
| 3 | 1 | Seeger butt | 600051 |
| 4 | 1 | Butt | 653017 |
| 5 | 2 | Self locking nut | 600055 |
| 6 | 2 | Self locking nut washer | 600032 |
| 7 | 1 | Sequential piston o-ring | 600044 |
| 8 | 1 | Long sequential piston | 653047 |
| 9 | 1 | Seal | 653034 |
| 10 | 1 | Flat gasket washer | 600034 |
| 11 | 2 | Axle gasket | 600041 |
| 12 | 1 | Sequential piston axle | 650011 |
| 13 | 1 | Spring | 600025 |
| 14 | 1 | Housing guide | 653020 |
| 15 | 1 | Flame arrester | 650070 |
| 16 | 1 | Body | 653001 |
| 17 | 1 | Closing gasket | 600040 |
| 18 | 1 | Closing saucer | 600005 |

ACCESSORIES

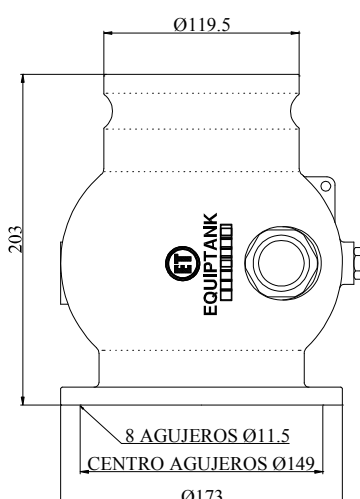
| | |
|---------------|-------------|
| Flange gasket | Art. 650091 |
| Flange | Art. 650090 |

Vapor recovery Adaptor

Art. 660000



Weight: 2,96 Kg



CHARACTERISTICS:

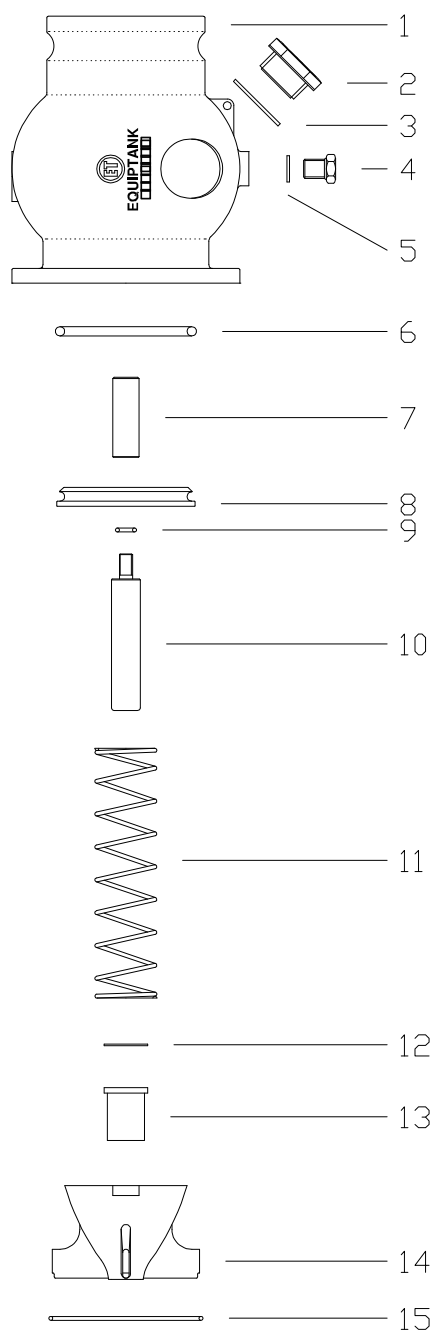
Complies with EN 13081 regulation.
BVQI-E certified with certificate N° 5000661-H-CPI.
Complies with API RP1004 regulation.
Outlet connector in accordance to MIL-C-27487
Sightglass for product detection in the line.
Purge hole with plug for increase security.
Maximum flow design. Minimum loss of load.
Body pressure tested at 500 KPa.

MATERIALS:

Body and components in treated and anodized lightweight aluminium alloy.
Internal components in lightweight aluminium alloy.
Spring in stainless steel.
Gaskets in fluoroelastomer / Nitrile.

Vapor recovery Adaptor

Art. 660000



| Fig. | Qty. | Description | Art, |
|------|------|----------------------|--------|
| 1 | 1 | Body | 660001 |
| 2 | 1 | Sightglass | 660085 |
| 3 | 1 | Sightglass gasket | 660086 |
| 4 | 1 | Plug | 940036 |
| 5 | 1 | Plug gasket | 940037 |
| 6 | 1 | Shutter gasket | 740070 |
| 7 | 1 | Top axle | 660011 |
| 8 | 1 | Shutter saucer | 660005 |
| 9 | 1 | Bottom axle gasket | 940044 |
| 10 | 1 | Guide axle | 660010 |
| 11 | 1 | Spring | 660060 |
| 12 | 1 | Seeger housing guide | 740080 |
| 13 | 1 | Housing guide | 740065 |
| 14 | 1 | Shutter guide body | 660015 |
| 15 | 1 | Elastic ring | 740063 |



ACCESSORIES

Plug Art. 686000
Interlock Art. 745200

Long push-button Interlock

Art. 745200



CHARACTERISTICS:

3 way mechanical valve activated by means of a push button.

Fitted on the 4" vapor recovery adaptor.

Maximum working pressure 1000kPa.

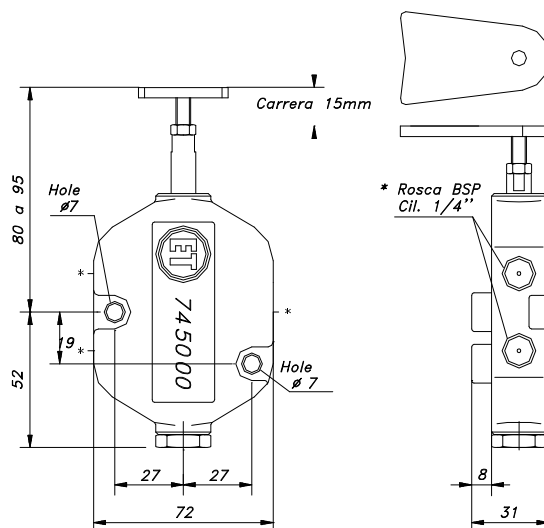
MATERIALS:

Body in treated lightweight aluminium alloy.

Components in brass and steel.

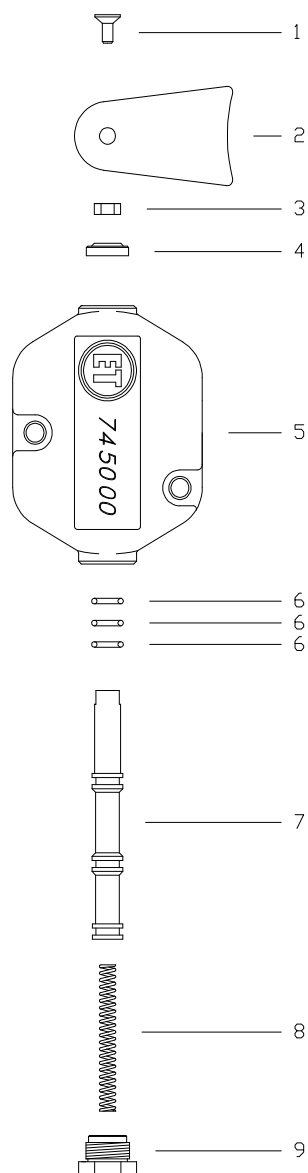
Gaskets in NBR.

Weight: 0,3 Kg

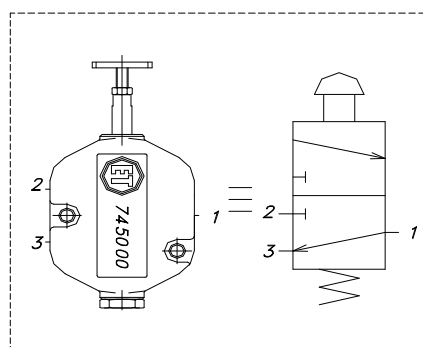


Long push-button Interlock

Art. 745200



| Fig. | Qty. | Description | Art, |
|------|------|---------------------|--------|
| 1 | 1 | Screw | 745049 |
| 2 | 1 | Push-button | 745012 |
| 3 | 1 | Check nut | 745052 |
| 4 | 1 | Dust cover | 745065 |
| 5 | 1 | Body | 745001 |
| 6 | 3 | Distribution gasket | 745060 |
| 7 | 1 | Distribution axle | 745005 |
| 8 | 1 | Spring | 745015 |
| 9 | 1 | Plug | 745020 |



Vapor recovery Adaptor

Art. 680000



Weight: 1,85Kg

CHARACTERISTICS:

Complies with API RP1004 regulation

Connector outlet in accordance with MIL-C-27487

4" BSP female thread

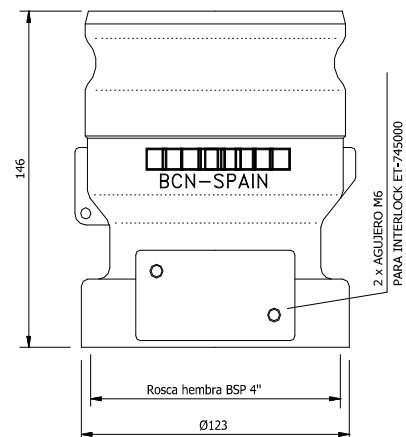
MATERIALS:

Body in treated and anodized lightweight aluminium alloy.

Components in treated lightweight aluminium alloy.

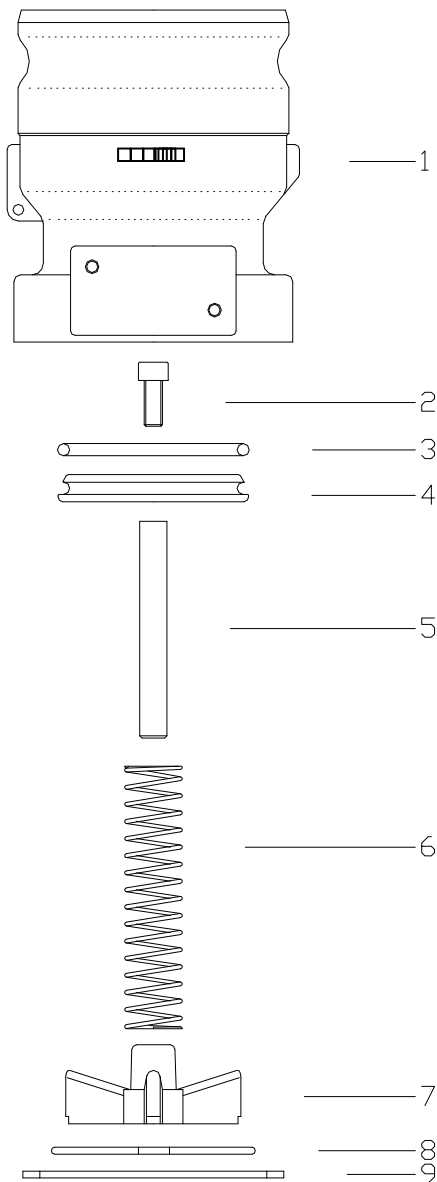
Spring in stainless steel.

Gaskets in fluoroelastomer / Nitrile / "Maclatan".



Vapor recovery Adaptor

Art. 680000



| Fig. | Qty. | Description | Art. |
|------|------|----------------------|--------|
| 1 | 1 | Body | 680001 |
| 2 | 1 | Closing saucer | 680005 |
| 3 | 1 | Shutter axle | 680010 |
| 4 | 1 | Shutter guide | 680015 |
| 5 | 1 | Shutter spring | 680020 |
| 6 | 1 | Fixing ring | 680025 |
| 7 | 1 | Shutter gasket | 680030 |
| 8 | 1 | 4" flat gasket | 680035 |
| 9 | 1 | Shutter saucer screw | 680040 |

ACCESSORIES

| | |
|-----------------|-------------|
| Plug | Art. 686000 |
| M4'-H3' Bushing | Art. 680090 |
| Interlock | Art. 745100 |

Vapor recovery Adaptor Cap

Art. 686000



Weight: 0,58 Kg

CHARACTERISTICS:

Design in accordance to API-RP1004 regulation.

As an option it can mount two brass cam arms (ref: 686200)

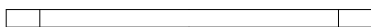
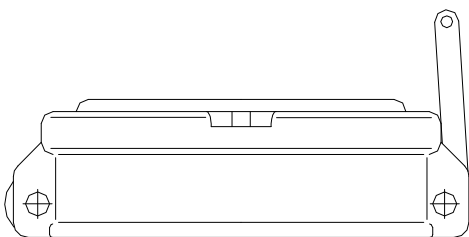
MATERIALS:

Body in lightweight aluminium alloy.

Cam arm in forged brass.

Gasket in Nitrile / "Vitón".

Fastening chain in steel.



ACCESSORIES

Flat gasket Art. 686090

Long push-button Interlock

Art. 745100

CHARACTERISTICS:

3 way mechanical valve activated by means of a push button.

Fitted on the 4" vapor recovery adaptor.

Maximum working pressure 1000kPa.



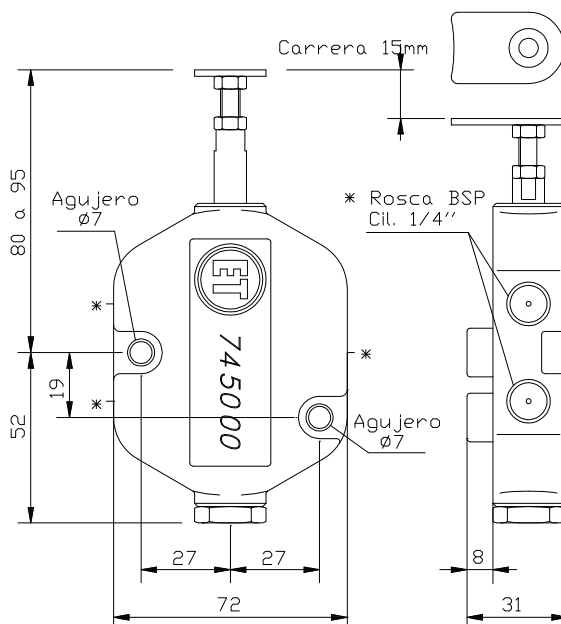
Weight: 0,3Kg

MATERIALS:

Body in treated lightweight aluminium alloy.

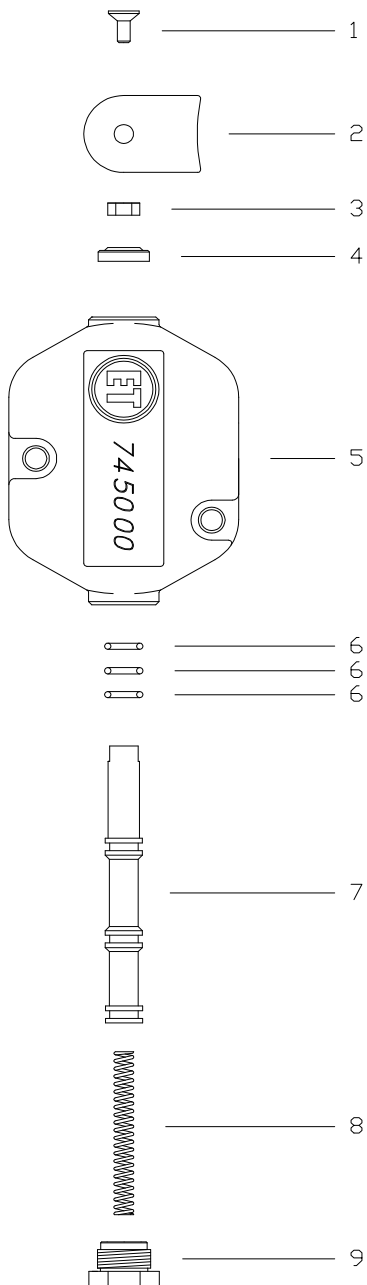
Components in brass and steel.

Gaskets in NBR.

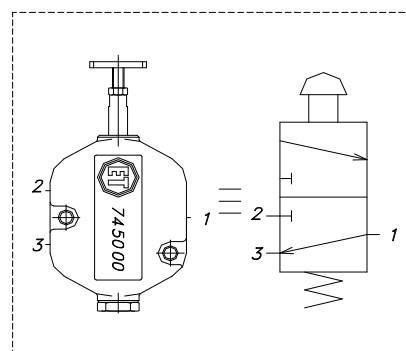


Long push-button Interlock

Art. 745100



| Fig. | Qty. | Description | Art. |
|------|------|---------------------|--------|
| 1 | 1 | Screw | 745049 |
| 2 | 1 | Push-button | 745011 |
| 3 | 1 | Check nut | 745052 |
| 4 | 1 | Dust cover | 745065 |
| 5 | 1 | Body | 745001 |
| 6 | 3 | Distribution gasket | 745060 |
| 7 | 1 | Distribution axle | 745005 |
| 8 | 1 | Spring | 745015 |
| 9 | 1 | Plug | 745020 |



4" API loading and unloading valve

Art. 741000



Weight: 4,25 Kg

CHARACTERISTICS:

Complies with API RP-1004 regulation and is compatible with API adaptors.

Complies with EN 13083 regulation.

BVQI-E certified with certificate N° 5000661-F-CPI.

4" TTMA fastening flange

Body pressure tested at 500 KPa.

Connection piece with hard anodization treatment for a longer life.

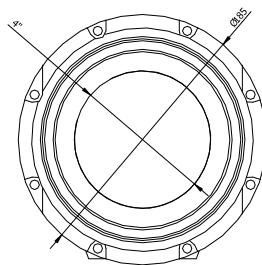
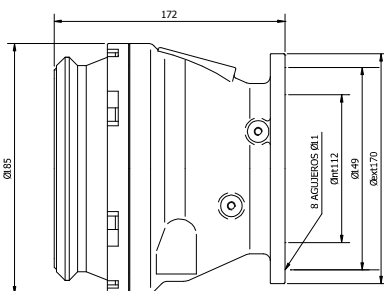
Replaceable

MATERIALS:

Body and components in treated and anodized lightweight aluminium alloy.

Internal components in stainless steel for better endurance and durability.

Gaskets in fluorelastomer / Nitrile.



ACCESSORIES:

4" API Flange Art. 740890F

4" API Cap Art. 746100

Gasket

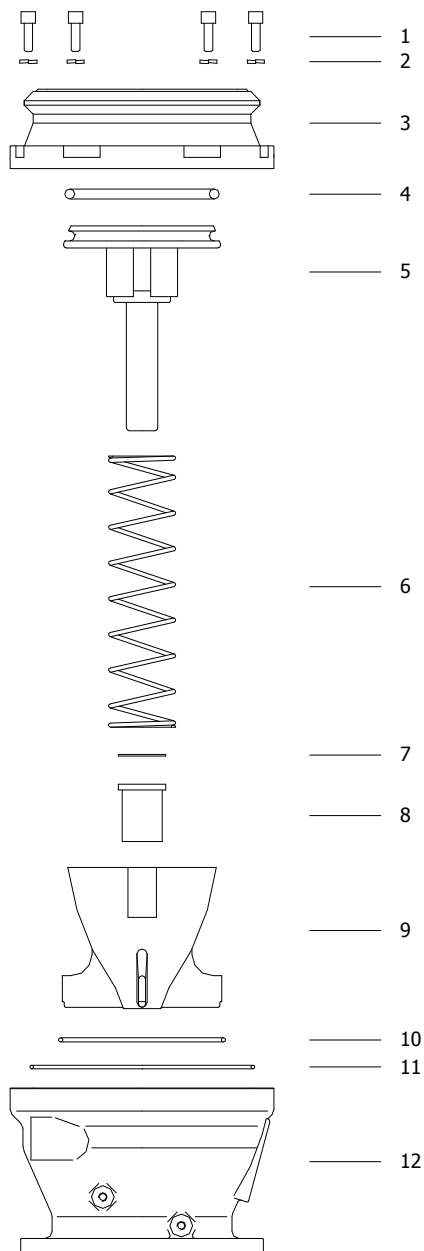
Interlock

Art. 740078 / 740078V

Art. 745000

4" API loading and unloading valve

Art. 741000



| Fig. | Qty. | Description | Art. |
|------|------|-------------------------|---------|
| 1 | 8 | Body-coupling screw | 740085 |
| 2 | 8 | Body-coupling washer | 700085 |
| 3 | 1 | Coupling | 740005 |
| 4 | 1 | Shutter gasket | 740070 |
| 5 | 1 | Shutter | 741010 |
| 6 | 1 | Spring | 740061 |
| 7 | 1 | Seeger housing guide | 740080 |
| 8 | 1 | Shutter housing guide | 740065T |
| 9 | 1 | Shutter body guide | 740015 |
| 10 | 1 | Elastic body guide ring | 740063 |
| 11 | 1 | Body-coupling gasket | 740074 |
| 12 | 1 | Body | 740001 |



ACCESSORIES

Body flange gasket Art. 740078
Interlock Art. 745000

4" API loading and unloading valve with sightglass Art. 741500



Weight: 4,3 Kg

CHARACTERISTICS:

Complies with API RP-1004 regulation and is compatible with API adaptors.

Complies with EN 13083 regulation.

BVQI-E certified with certificate N° 5000661-F-CPI.
4" TTMA fastening flange.

Body pressure tested at 500 KPa.

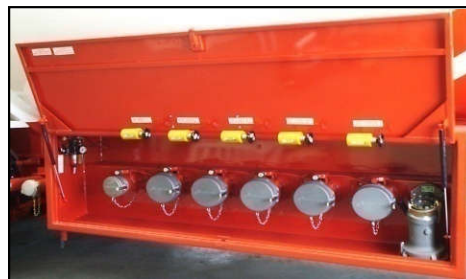
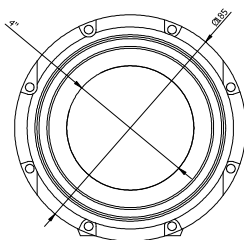
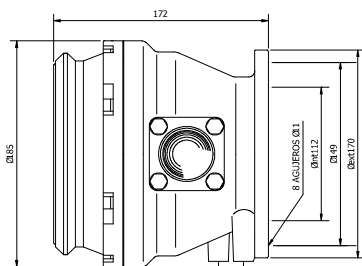
Sightglass allows for product check during loading and unloading

MATERIALS:

Body and components in treated and anodized lightweight aluminium alloy.

Internal components in stainless steel for better endurance and durability.

Gaskets in fluorelastomer / Nitrile.



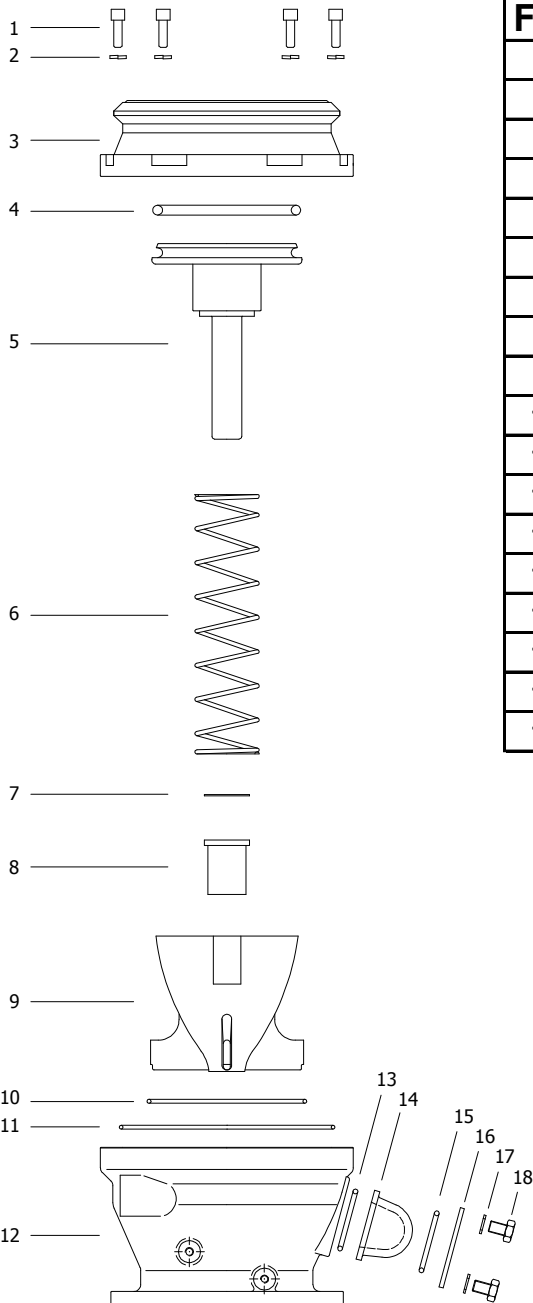
ACCESSORIES:

4" API Flange Art. 740890F
4" API Cap Art. 746100

Gasket
Interlock

Art. 740078 / 740078V
Art. 745000

4" API loading and unloading valve with sightglass Art. 741500



| Fig. | Qty. | Description | Art. |
|------|------|----------------------------|---------|
| 1 | 8 | Body-coupling screw | 740085 |
| 2 | 8 | Body-coupling washer | 700085 |
| 3 | 1 | Coupling | 740005 |
| 4 | 1 | Shutter gasket | 740070 |
| 5 | 1 | Shutter | 741010 |
| 6 | 1 | Spring | 740061 |
| 7 | 1 | Seeger housing guide | 740080 |
| 8 | 1 | Shutter housing guide | 740065T |
| 9 | 1 | Shutter body guide | 740015 |
| 10 | 1 | Elastic body guide ring | 740063 |
| 11 | 1 | Body-coupling gasket | 740074 |
| 12 | 1 | Body | 740001 |
| 13 | 1 | Interior sightglass o-ring | 741514 |
| 14 | 1 | Sightglass | 741505 |
| 15 | 1 | Exterior sightglass o-ring | 741515 |
| 16 | 1 | Sightglass sheet | 741510 |
| 17 | 4 | Sightglass washer | 741525 |
| 18 | 4 | Sightglass screw | 741520 |

ACCESSORIES
 Body flange gasket Art. 740078
 Interlock Art. 745000

4" API loading and unloading valve with handle Art. 742000



Weight: 4,6 Kg

CHARACTERISTICS:

Complies with API RP-1004 regulation and is compatible with API adaptors.

Complies with EN 13083 regulation.

BVQI-E certified with certificate N° 5000661-F-CPI.

4" TTMA fastening flange.

Body pressure tested at 500 KPa.

Handle in cast-iron aluminium with open and close position.

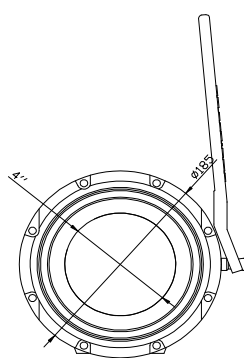
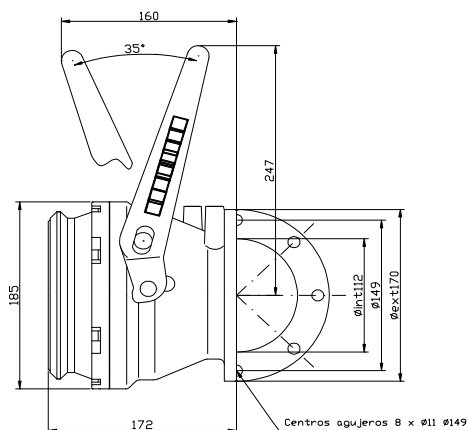
Handle has two opening positions to regulate the unloading flow volume.

MATERIALS:

Body and components in treated and anodized lightweight aluminium alloy.

Internal components in stainless steel for better endurance and durability.

Gaskets in fluoroelastomer / Nitrile.



OPTIONS:

Standard handle

L= 352 mm

Short handle

L= 295 mm

ACCESSORIES:

4" API Flange Art. 740890F

4" API Cap Art. 746100

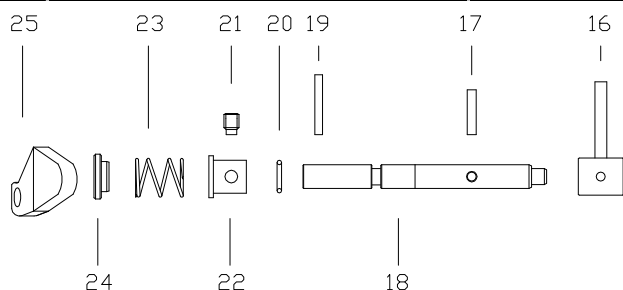
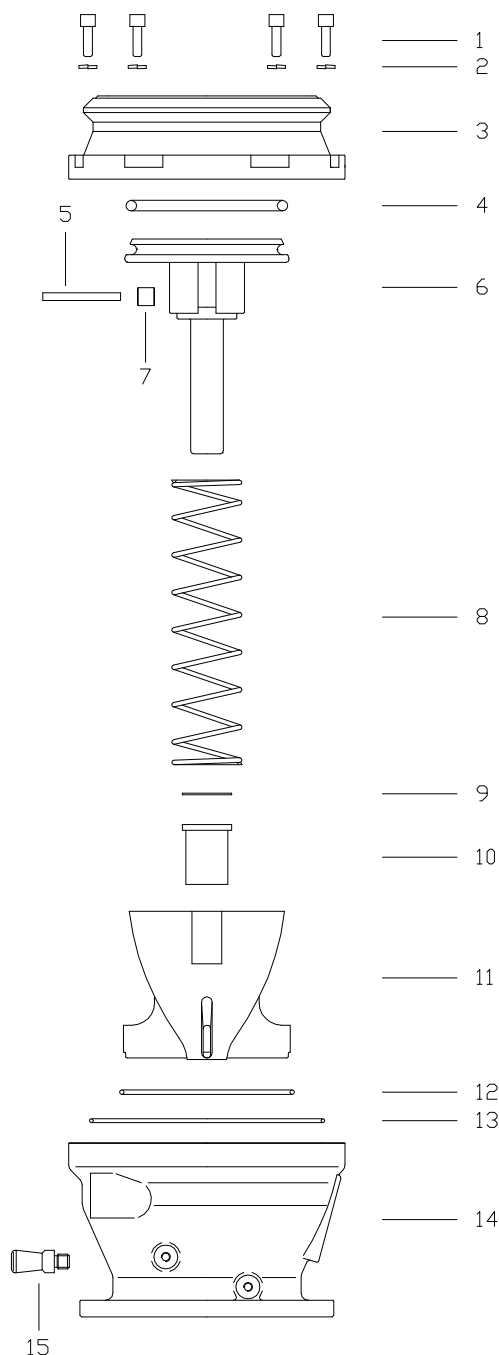
Gasket
Interlock

Art. 740078 / 740078V

Art. 745000

4" API loading and unloading valve with handle Art. 742000

| Fig. | Qty. | Description | Art. |
|------|------|-------------------------|---------|
| 1 | 8 | Body-coupling screw | 740085 |
| 2 | 8 | Body-coupling washer | 700085 |
| 3 | 1 | Coupling | 740005 |
| 4 | 1 | Shutter gasket | 740070 |
| 5 | 1 | Handle cotter pin rivet | 742014 |
| 6 | 1 | Handle shutter | 741010 |
| 7 | 1 | Handle shutter rivet | 742012 |
| 8 | 1 | Spring | 740061 |
| 9 | 1 | Seeger housing guide | 740080 |
| 10 | 1 | Shutter housing guide | 740065T |
| 11 | 1 | Shutter body guide | 740015 |
| 12 | 1 | Elastic body guide ring | 740063 |
| 13 | 1 | Body-coupling gasket | 740074 |
| 14 | 1 | Body | 742001 |
| 15 | 1 | V2 handle stopper | 742056 |
| 16 | 1 | V2 cam arm | 742027C |
| 17 | 1 | V2 cam arm cotter pin | 742028 |
| 18 | 1 | v2 handle axle | 742019 |
| 19 | 1 | Handle cotter pin | 742042 |
| 20 | 1 | Handle axle gasket | 742034 |
| 21 | 1 | Handle axle positioner | 742060 |
| 22 | 1 | V2 handle housing guide | 742038 |
| 23 | 1 | Handle spring | 742043 |
| 24 | 1 | Handle spring housing | 742041 |
| 25 | 1 | Handle | 742030 |



4" API loading and unloading valve with handle and sightglass Art. 742500



Weight: 4,65 Kg

CHARACTERISTICS:

Complies with API RP-1004 regulation and is compatible with API adaptors.

Complies with EN 13083 regulation.

BVQI-E certified with certificate N° 5000661-F-CPI.

4" TTMA fastening flange.

Body pressure tested at 500 KPa.

Sightglass allows for product check during loading and unloading

Handle in cast-iron aluminium with open and close position.

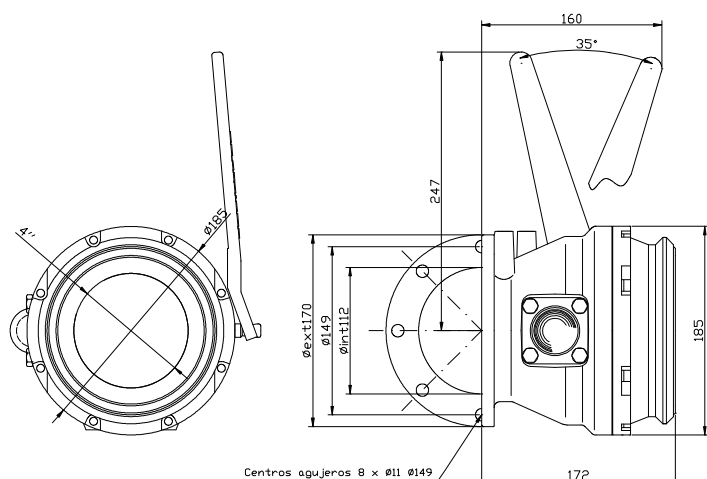
Handle has two opening positions to regulate the unloading flow volume.

MATERIALS:

Body and components in treated and anodized lightweight aluminium alloy.

Internal components in stainless steel for better endurance and durability.

Gaskets in fluorelastomer / Nitrile.



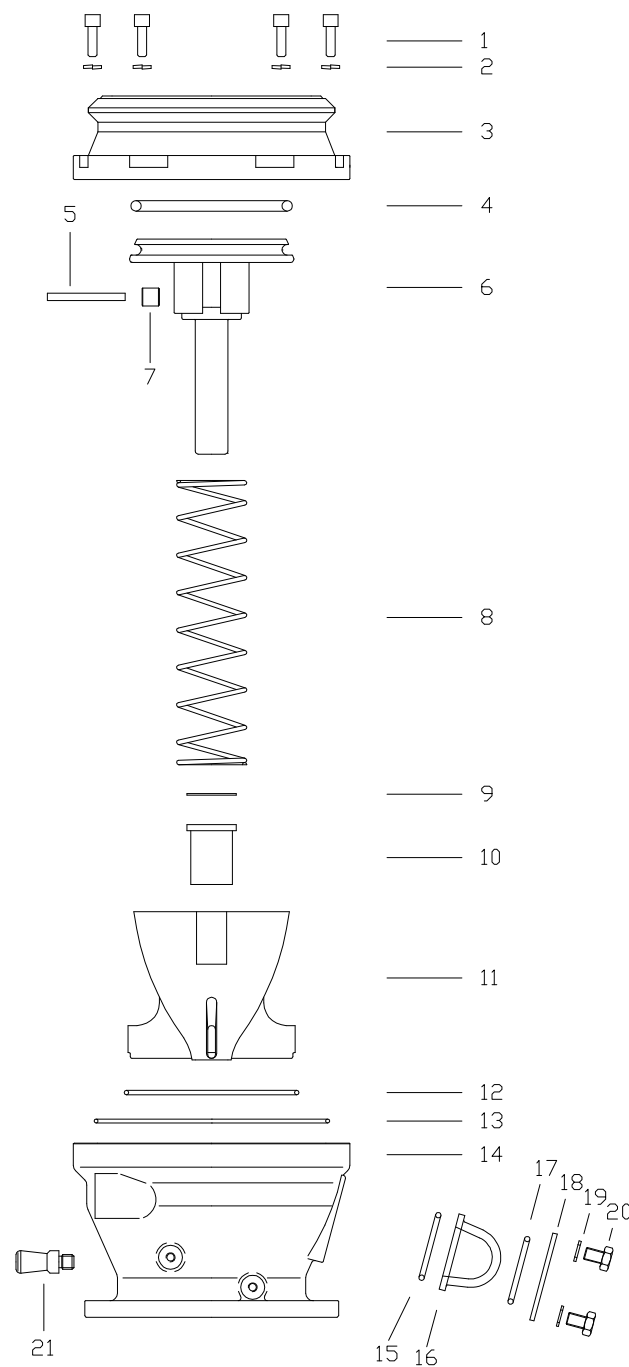
OPTIONS:

Standard handle L= 352 mm

Short handle L= 295 mm

4" API loading and unloading valve with handle and sightglass Art. 742500

| Fig. | Qty. | Description | Art. |
|------|------|----------------------------|---------|
| 1 | 8 | Body-coupling screw | 740085 |
| 2 | 8 | Body-coupling washer | 700085 |
| 3 | 1 | Coupling | 740005 |
| 4 | 1 | Shutter gasket | 740070 |
| 5 | 1 | Handle rivet cotter pin | 742014 |
| 6 | 1 | Handle shutter | 741010 |
| 7 | 1 | Handle rivet shutter | 742012 |
| 8 | 1 | Spring | 740061 |
| 9 | 1 | Seeger housing guide | 740080 |
| 10 | 1 | Shutter housing guide | 740065T |
| 11 | 1 | Shutter body guide | 740015 |
| 12 | 1 | Elastic body guide ring | 740063 |
| 13 | 1 | Body-coupling gasket | 740074 |
| 14 | 1 | Body | 742001 |
| 15 | 1 | Internal sightglass o-ring | 741514 |
| 16 | 1 | Sightglass | 741505 |
| 17 | 1 | External sightglass o-ring | 741515 |
| 18 | 1 | Sightglass sheet | 741510 |
| 19 | 4 | Sightglass washer | 741525 |
| 20 | 4 | Sightglass screw | 741520 |
| 21 | 1 | V2 handle stopper | 742056 |
| 22 | 1 | V2 cam arm | 742027C |
| 23 | 1 | V2 cam arm cotter pin | 742028 |
| 24 | 1 | V2 handle axle | 742019 |
| 25 | 1 | Handle cotter pin | 742042 |
| 26 | 1 | Handle axle gasket | 742034 |
| 27 | 1 | Handle axle positioner | 742060 |
| 28 | 1 | V2 handle housing guide | 742038 |
| 29 | 1 | Handle spring | 742043 |
| 30 | 1 | Handle spring housing | 742041 |
| 30 | 1 | Handle | 742030 |



4" API Cap

Art. 746100



Weight: 0,85 Kg

CHARACTERISTICS:

Design in compliance with API-RP1004 regulation.

Option of a nylon cam arm to reduce wear of the API valve.

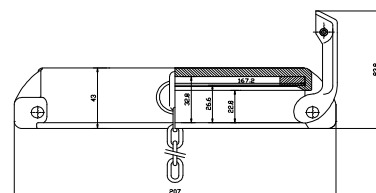
MATERIALS:

Body in lightweight aluminium alloy.

Cam arm in forged brass

Gasket in Nitrile / "Vitón".

Steel fastening chain.



ACCESSORIES

Flat gasket Art. 746030

Nylon Cam arm Art. 746020A

Interlock

Art. 745000



Weight: 0,3 Kg

CHARACTERISTICS:

3 way mechanical valve activated by means of a push button.

Fitted on the API loading/unloading valve

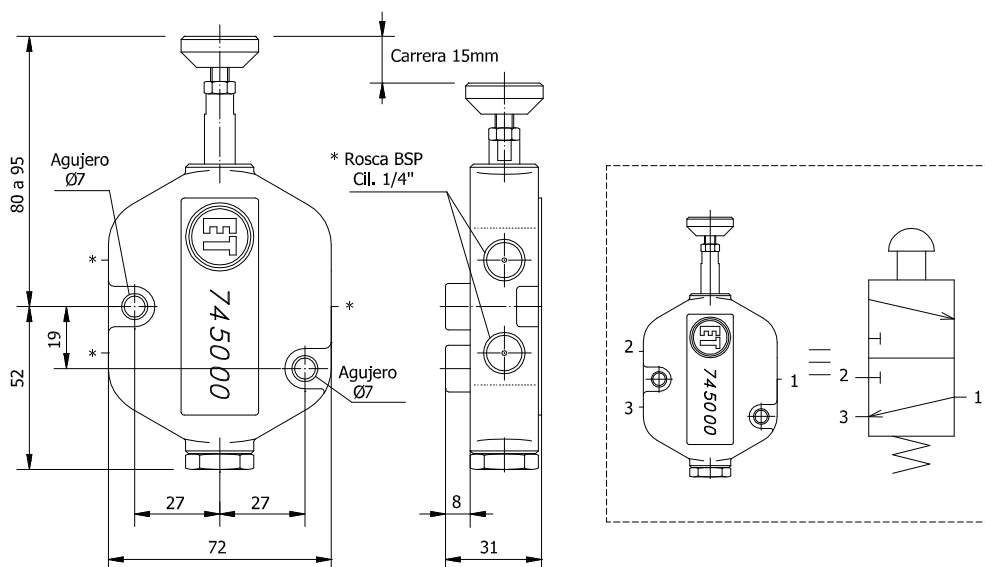
Maximum working pressure 1000kPa.

MATERIALS:

Body in treated lightweight aluminium alloy.

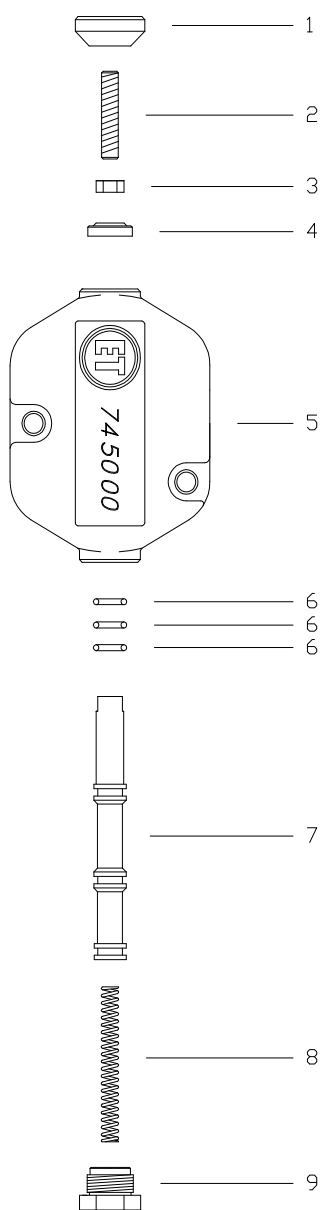
Components in brass and steel.

Gaskets in NBR.



Interlock

Art. 745000



| Fig. | Qty. | Description | Art. |
|------|------|---------------------|--------|
| 1 | 1 | Push-button | 745010 |
| 2 | 1 | Allen stud | 745050 |
| 3 | 1 | Check nut | 745052 |
| 4 | 1 | Dust cover | 745065 |
| 5 | 1 | Body | 745001 |
| 6 | 3 | Distribution gasket | 745060 |
| 7 | 1 | Distribution axle | 745005 |
| 8 | 1 | Spring | 745015 |
| 9 | 1 | Plug | 745020 |

4" See-through Spyhole

Art: 740893



Weight: 0,8 kg

Gives a clear vision of the flow of product.

Of easy installation.

Fitted in between the 4" API loading/unloading valve and the 4" API TTMA flange.

Manufactured in transparent tempered acrylic.

Fastened by means of 8 screws.

GENERAL DIMENSIONS:

Thickness: 44,5mm

External diameter: 174mm

Internal diameter: 102mm

Diameter between centers: 149mm



4" API TTMA Flange

Art: 740890F / 740890H



Weight: 1,68 Kg

Available Materials:

Aluminium alloy

Steel

Art: 740078N / 740078V

NBR body flange gasket (N).

“Vitón” body flange gasket (V).

General dimensions:

Int Ø: 112mm

Ext Ø: 170mm

Ø between holes: 149mm

4" TTMA API flange.

Welded to the tanker's unloading manifold and allows for the adjustment of the 4" API loading/unloading valve, the 4" vapor recovery adaptor and the 4" see-through spyhole.

GENERAL DIMENSIONS:

Thickness: 12 mm.

External diameter: 173 mm.

Internal diameter: 101 mm.

Diameter between centers: 150mm

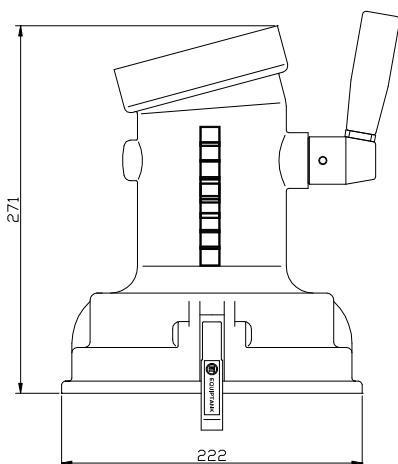


4" API Gravity Drop Adaptor with handle

Art. 764000



Weight: 3,29 Kg



CHARACTERISTICS:

Complies with API RP-1004 regulation.

Complies with EN 13315 regulation.

BVQI-E certified with certificate number 5000661-G-CPI.

4" Female BSP thread

Special mouth design that allows to act directly on the interlock at any position.

Body pressure tested at 500 kPa.

MATERIALS:

Body and components in treated lightweight aluminium alloy.

Axle and handle in stainless steel and reinforced plastic.

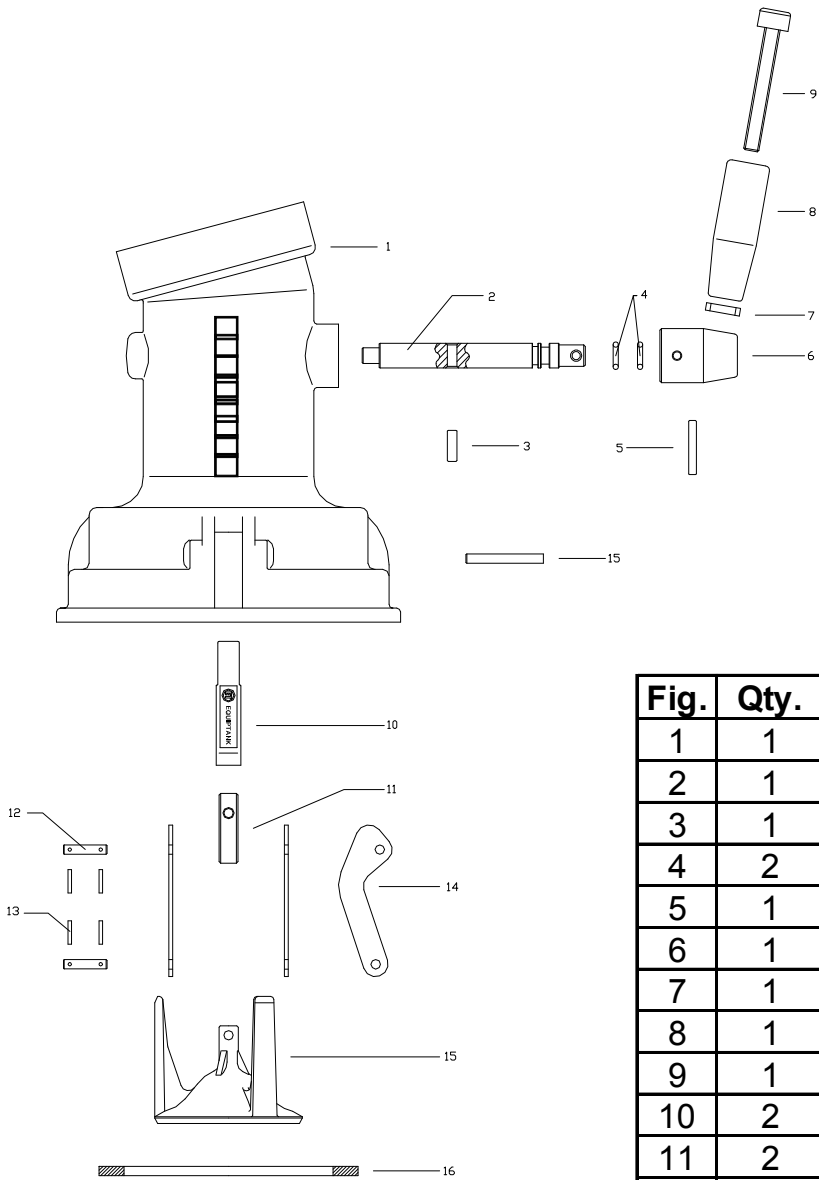
Cam arms in forged brass.

Gaskets in fluoroelastomer.



4" API Gravity Drop Adaptor with handle

Art. 764000



| Fig. | Qty. | Description | Art. |
|------|------|--------------------------|--------|
| 1 | 1 | Body | 764001 |
| 2 | 1 | Handle axle | 764010 |
| 3 | 1 | Handle cotter pin | 764037 |
| 4 | 2 | Handle axle gasket | 764035 |
| 5 | 1 | Cotter pin | 764037 |
| 6 | 1 | Handle base | 764024 |
| 7 | 1 | Handle check nut | 764022 |
| 8 | 1 | Handle | 764020 |
| 9 | 1 | Handle screw | 764021 |
| 10 | 2 | Cam rivet | 746025 |
| 11 | 2 | Cam | 746021 |
| 12 | 1 | Cranck | 764012 |
| 13 | 4 | Plunger cotter pin rivet | 764032 |
| 14 | 2 | Plunger rivet | 764030 |
| 15 | 2 | Piston rod | 764015 |
| 16 | 1 | Plunger | 764005 |
| 17 | 1 | Gasket | 746030 |

ACCESSORIES:

| | |
|-------------------|-------------|
| M4" – M3" Bushing | Art. 764090 |
| Bushing gasket | Art. 764091 |
| Flat gasket | Art. 746030 |

4" API Gravity Drop Adaptor with handle and sightglass Art. 764500



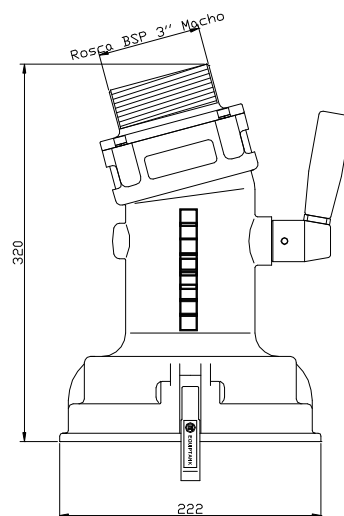
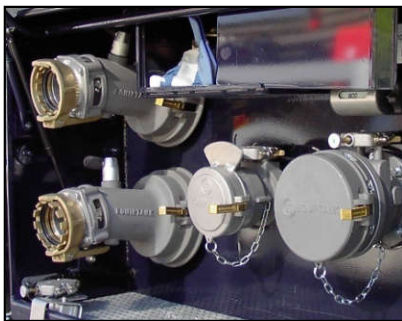
Weight: 5,04 Kg

CHARACTERISTICS:

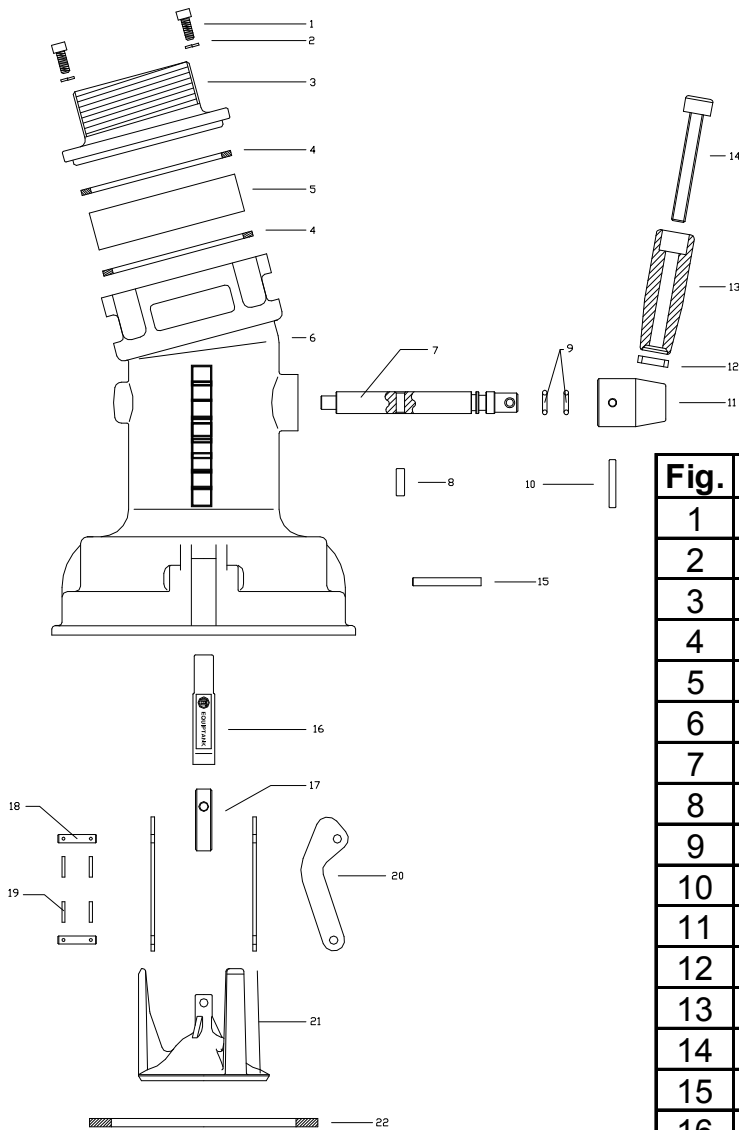
- Complies with API RP-1004 regulation.
- Complies with EN 13315 regulation.
- BVQI-E certified with certificate number 5000661-G-CPI.
- 3" BSP male thread.
- Special mouth design that allows to act directly on the interlock at any position.
- Body pressure tested at 500 kPa.

MATERIALS:

- Body and components in treated lightweight aluminium alloy.
- Axles and handle in stainless steel and reinforced plastic.
- Cams arms in forged brass.
- Sightglass in PYREX crystal.
- Gaskets in fluoroelastomer.



4" API Gravity Drop Adaptor with handle and sightglass Art. 764500



| Fig. | Qty. | Description | Art. |
|------|------|--------------------------|--------|
| 1 | 4 | Bushing screw | 764516 |
| 2 | 4 | Bushing washer | 764517 |
| 3 | 1 | Bushing | 764591 |
| 4 | 2 | Sightglass gasket | 764514 |
| 5 | 1 | Sightglass | 764505 |
| 6 | 1 | Body | 764001 |
| 7 | 1 | Handle axle | 764010 |
| 8 | 1 | Crank cotter pin | 764037 |
| 9 | 2 | Handle axle gasket | 764035 |
| 10 | 1 | Handle cotter pin | 764037 |
| 11 | 1 | Handle base | 764024 |
| 12 | 1 | Handle check nut | 764022 |
| 13 | 1 | Handle | 764020 |
| 14 | 1 | Handle screw | 764021 |
| 15 | 2 | Cam rivet | 746025 |
| 16 | 1 | Cam | 746021 |
| 17 | 1 | Crank | 764012 |
| 18 | 4 | Plunger cotter pin rivet | 764032 |
| 19 | 2 | Pluger rivet | 764030 |
| 20 | 2 | Piston rod | 764015 |
| 21 | 1 | Plunger | 764005 |
| 22 | 1 | Gaket | 746030 |

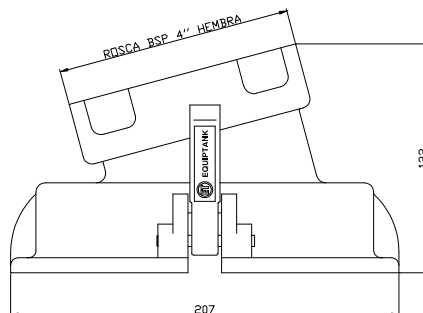
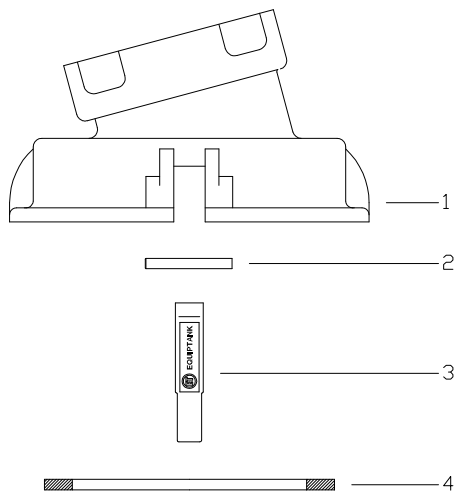
ACCESSORIES:
 Flat gasket Art. 746030

4" API Short Gravity Drop Adaptor

Art. 765000



Weight: 1,5 Kg



CHARACTERISTICS:

Complies with API RP-1004 regulation.
 Complies with EN 13315 regulation.
 BVQI-E certified with certificate N° 5000661-G-CPI.
 4" Female BSP thread.
 Body pressure tested at 500 kPa.

MATERIALS:

Body in treated lightweight aluminium alloy.
 Components in stainless steel.
 Cam arms in forged brass.
 Gaskets in fluoroelastomer

| Fig. | Qty. | Description | Art, |
|------|------|-----------------|--------|
| 1 | 1 | Body | 765001 |
| 2 | 2 | Cam arm rivet | 746025 |
| 3 | 2 | Closing cam arm | 746021 |
| 4 | 1 | Gasket | 746030 |

ACCESSORIES:

| | |
|-------------------|-------------|
| M4" – M3" Bushing | Art. 764090 |
| Bushing gasket | Art. 764091 |
| Flat gasket | Art. 746030 |

4" API Short Gravity Drop Adaptor with sightglass Art. 765500



Weight: 2,25Kg

CHARACTERISTICS:

Complies with API RP-1004 regulation.

Complies with EN 13315 regulation.

BVQI-E certified with certificate N° 5000661-G-CPI.

3" Male BSP thread.

Body pressure tested at 500 kPa.

MATERIALS:

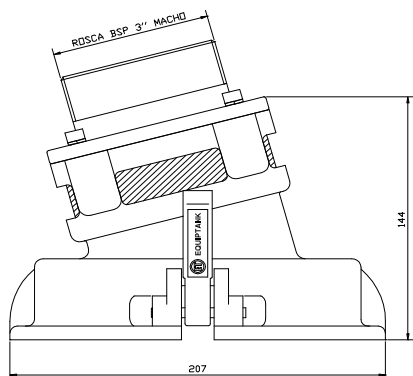
Body in treated lightweight aluminium alloy.

Components in stainless steel.

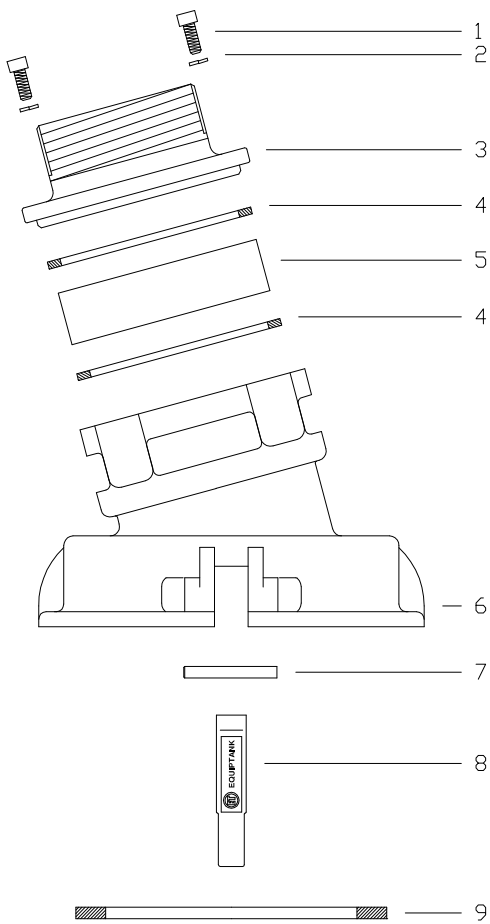
Cam arms in forged brass.

Sightglass in PYREX crystal.

Gaskets in fluoroelastomer



4" API Short Gravity Drop Adaptor with sightglass Art. 765500



| Fig. | Qty. | Description | Art. |
|------|------|-------------------|--------|
| 1 | 4 | Bushing screw | 764516 |
| 2 | 4 | Bushing washer | 464517 |
| 3 | 1 | Bushing | 764591 |
| 4 | 2 | Sightglass gasket | 764514 |
| 5 | 1 | Sightglass | 764505 |
| 6 | 1 | Body | 765501 |
| 7 | 2 | Cam arm rivet | 746025 |
| 8 | 2 | Closing cam arm | 746021 |
| 9 | 1 | Gasket | 746030 |



ACCESSORIES:

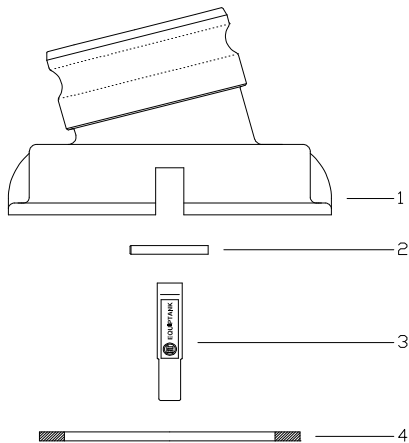
Flat gasket

Art. 746030

4" API Short Gravity Drop Adaptor with 4" kamlock outlet Art. 765600



Weight: 2,3 Kg



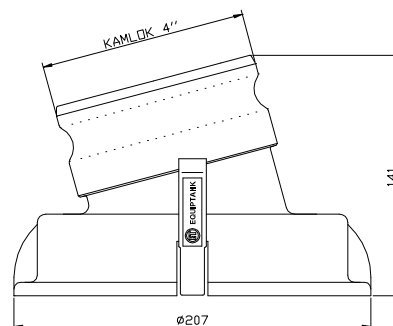
| Fig. | Qty. | Description | Art. |
|------|------|-----------------|--------|
| 1 | 1 | Body | 765601 |
| 2 | 2 | Cam arm rivet | 746025 |
| 3 | 2 | Closing cam arm | 746021 |
| 4 | 1 | Gasket | 746030 |

CHARACTERISTICS:

Complies with API RP-1004 regulation.
 Complies with EN 13315 regulation.
 BVQI-E certified with certificate N° 5000661-G-CPI.
 4" kamlock outlet
 Body pressure tested at 500 kPa.

MATERIALS:

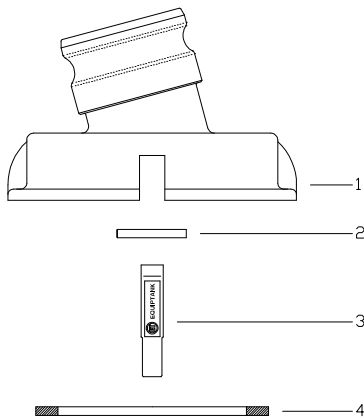
Body in treated lightweight aluminium alloy.
 Components in stainless steel.
 Cam arms in forged brass.
 Gaskets in fluoroelastomer



4" API Short Gravity Drop Adaptor with 3" kamlock outlet Art. 765700



Weight: 2,2 Kg



CHARACTERISTICS:

Complies with API RP-1004 regulation.

Complies with EN 13315 regulation.

BVQI-E certified with certificate N° 5000661-G-CPI.

3" kamlock outlet

Body pressure tested at 500 kPa.

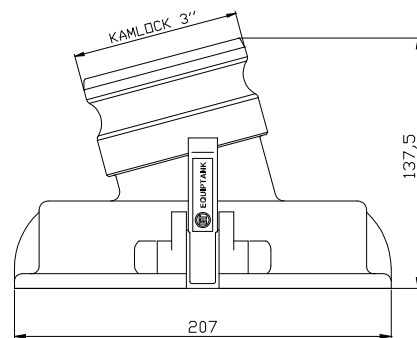
MATERIALS:

Body in treated lightweight aluminium alloy.

Components in stainless steel.

Cam arms in forged brass.

Gaskets in fluoroelastomer



| Fig. | Cant. | Denominación | Art. |
|------|-------|-----------------|--------|
| 1 | 1 | Body | 765701 |
| 2 | 2 | Cam arm rivet | 746025 |
| 3 | 2 | Closing cam arm | 746021 |
| 4 | 1 | Gasket | 746030 |

3" Pneumatic Bottom Valve

Art. 93 00 00



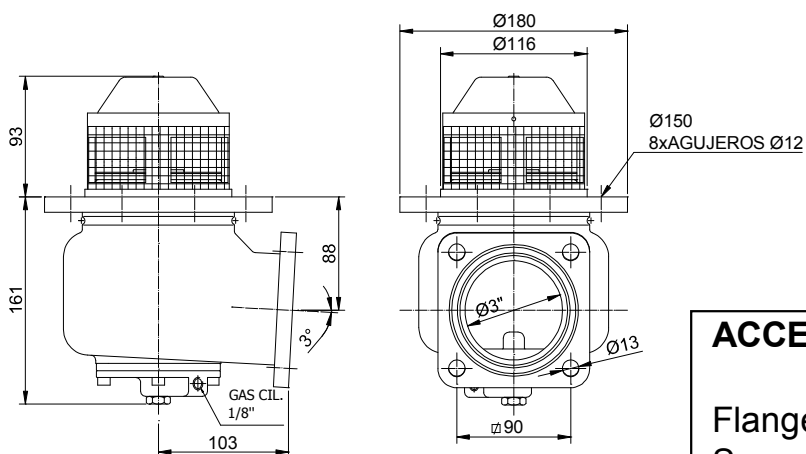
Weight: 3,4 Kg

CHARACTERISTICS:

- Pneumatic command.
- Emergency manual command.
- Body pressure tested at 750 kPa.
- Air feed pressure 400 to 800 kPa.

MATERIALS:

- Body and components in treated lightweight aluminium alloy.
- Axles and springs in stainless steel.
- Gaskets in fluoroelastomer.

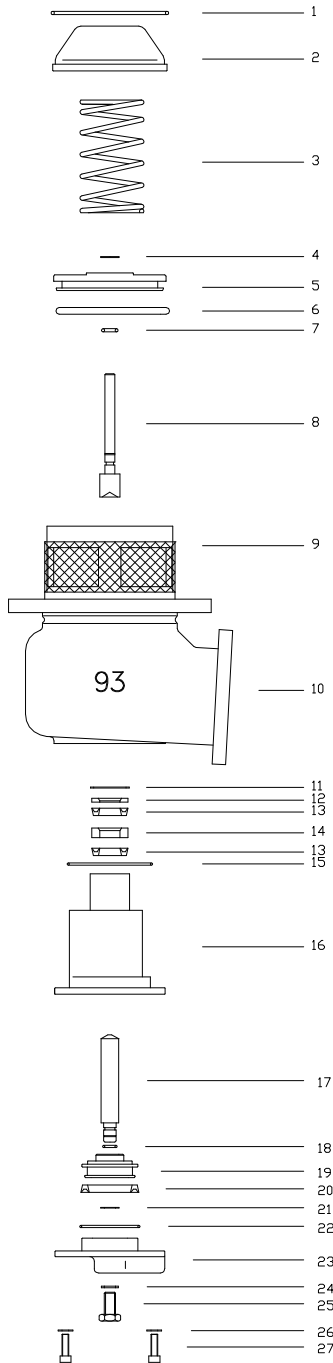


ACCESSORIES:

| | |
|----------------------|--------------|
| Flange gasket | Art. 930050N |
| Square flange gasket | Art. 930051N |
| 3" flange | Art. 930890 |
| 3" square flange | Art. 930891 |

3" Pneumatic Bottom Valve

Art. 93 00 00



| Fig. | Cant. | Denominación | Art. |
|------|-------|----------------------------|----------|
| 1 | 1 | Hood fixing ring | 930034 |
| 2 | 1 | Hood | 930003 |
| 3 | 1 | Closing saucer spring | 930028 |
| 4 | 1 | Closing saucer axle Seeger | 940071 |
| 5 | 1 | Closing saucer | 930010V2 |
| 6 | 1 | Saucer gasket | 930047 |
| 7 | 1 | Saucer axle gasket | 940044 |
| 8 | 1 | Closing saucer axle | 930020 |
| 9 | 1 | Filter mesh | 930090 |
| 10 | 1 | Body | 930001 |
| 11 | 1 | Cylinder body Seeger | 940070 |
| 12 | 1 | Retention ring | 940082 |
| 13 | 2 | Piston axle retainer | 940061 |
| 14 | 1 | Separator retainer housing | 940080 |
| 15 | 1 | Cylinder body gasket | 940042 |
| 16 | 1 | Cylinder body | 940005 |
| 17 | 1 | Piston axle | 940015 |
| 18 | 1 | Piston axle gasket | 940048 |
| 19 | 1 | Piston | 940025 |
| 20 | 1 | Piston retainer | 940060 |
| 21 | 1 | Piston axle gasket | 940048 |
| 22 | 1 | Butt gasket | 940040 |
| 23 | 1 | Butt | 940006 |
| 24 | 1 | Butt gasket washer | 940037 |
| 25 | 1 | Emergency plug | 940036 |
| 26 | 4 | Butt washer | 940039 |
| 27 | 4 | Butt screw | 942038 |

3" Sequential Pneumatic Bottom Valve

Art. 93 20 00



Weight: 3,4 Kg

CHARACTERÍSTICS:

Pneumatic command.

Emergency manual command.

Sequential pneumatic outlet for other device or opening sightglass.

Sequentiality acts once the shutter saucer is 75% open.

Body pressure tested at 750 kPa.

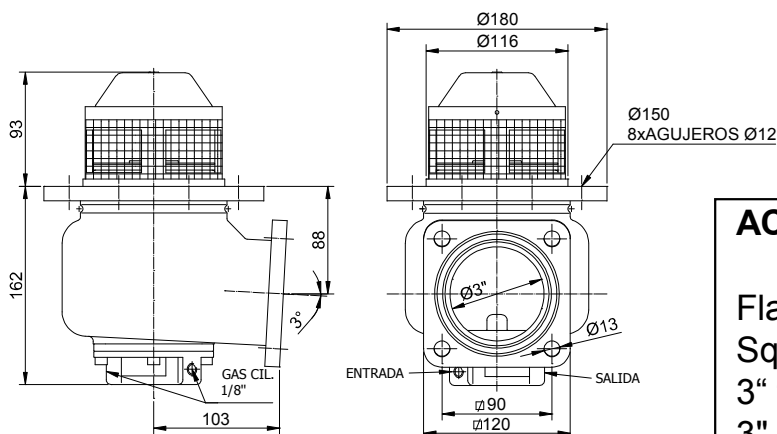
Air feed pressure 400 to 800 kPa.

MATERIALS:

Body and components in treated lightweight aluminium alloy.

Axles and spring in stainless steel.

Gaskets in fluoroelastomer.

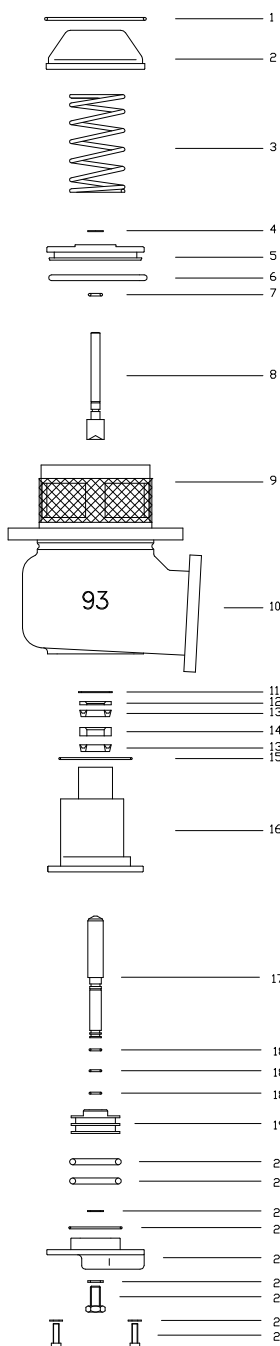


ACCESSORIES:

| | |
|----------------------|----------------|
| Flange gasket | Art. 93 00 50N |
| Square flange gasket | Art. 93 00 51N |
| 3" flange | Art. 93 08 90 |
| 3" square flange | Art. 93 08 91 |

3" Sequential Pneumatic Bottom Valve

Art. 93 20 00



| Fig. | Cant. | Denominación | Art. |
|------|-------|----------------------------|----------|
| 1 | 1 | Hood fixing ring | 930034 |
| 2 | 1 | Hood | 930003 |
| 3 | 1 | Closing saucer spring | 930028 |
| 4 | 1 | Closing saucer axle Seeger | 940071 |
| 5 | 1 | Closing saucer | 930010V2 |
| 6 | 1 | Saucer gasket | 930047 |
| 7 | 1 | Saucer axle gasket | 940044 |
| 8 | 1 | Closing saucer axle | 930020 |
| 9 | 1 | Filter mesh | 930090 |
| 10 | 1 | Body | 930001 |
| 11 | 1 | Cylinder body Seeger | 940070 |
| 12 | 1 | Retention ring | 940082 |
| 13 | 2 | Piston axle retainer | 940061 |
| 14 | 1 | Separator retainer housing | 940080 |
| 15 | 1 | Cylinder body gasket | 940042 |
| 16 | 1 | Sequential cylinder body | 942005 |
| 17 | 1 | Piston axle | 940015 |
| 18 | 1 | Piston axle gasket | 940048 |
| 19 | 1 | Piston | 940025 |
| 20 | 1 | Piston retainer | 940060 |
| 21 | 1 | Piston axle gasket | 940048 |
| 22 | 1 | Butt gasket | 940040 |
| 23 | 1 | Butt | 940006 |
| 24 | 1 | Butt gasket washer | 940037 |
| 25 | 1 | Emergency plug | 940036 |
| 26 | 4 | Butt washer | 940039 |
| 27 | 4 | Butt screw | 942038 |

3" Mechanical Bottom Valve

Art. 93 40 00



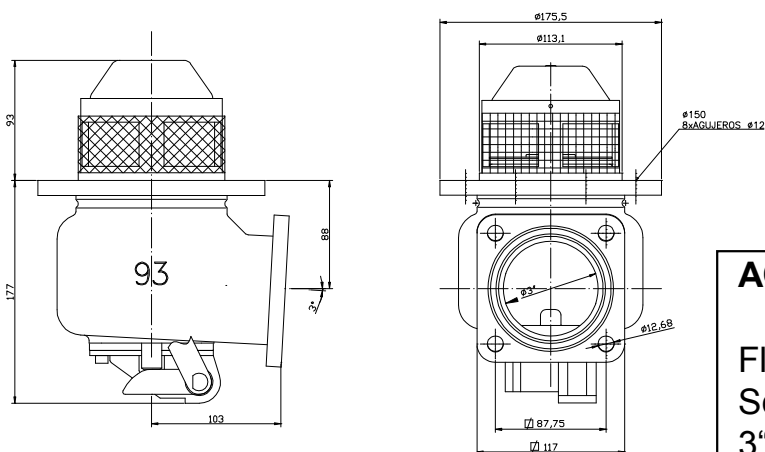
Weight: 3,5 Kg

CHARACTERISTICS:

Mechanical command.
Body pressure tested at 750 kPa.

MATERIALS:

Body and components in treated lightweight aluminium alloy.
Axles and spring in stainless steel.
Gaskets in fluoroelastomer.

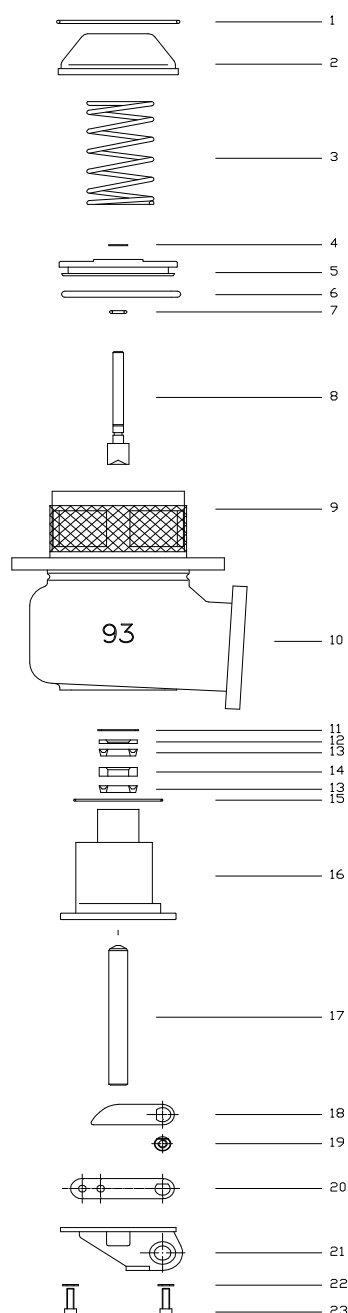


ACCESSORIES:

| | |
|----------------------|--------------|
| Flange gasket | Art. 930050N |
| Square flange gasket | Art. 930051N |
| 3" flange | Art. 930890 |
| 3" square flange | Art. 930891 |

3" Mechanical Bottom Valve

Art. 93 40 00



| Fig. | Qty. | Description | Art. |
|------|------|----------------------------|----------|
| 1 | 1 | Hood fixing ring | 930034 |
| 2 | 1 | Hood | 930003 |
| 3 | 1 | Closing saucer spring | 930030 |
| 4 | 1 | Closing saucer seeger axle | 940071 |
| 5 | 1 | Closing saucer | 930010V2 |
| 6 | 1 | Saucer gasket | 930047 |
| 7 | 1 | Saucer axle gasket | 940044 |
| 8 | 1 | Closing saucer axle | 930020 |
| 9 | 1 | Filter mesh | 930090 |
| 10 | 1 | Body | 930001 |
| 11 | 1 | Seeger cylinder body | 940070 |
| 12 | 1 | Seal ring | 940082 |
| 13 | 2 | Piston axle seal | 940061 |
| 14 | 1 | Seal separator housing | 940080 |
| 15 | 1 | Cylinder body gasket | 940042 |
| 16 | 1 | Cylinder body | 934005 |
| 17 | 1 | Intermediate axle | 934015 |
| 18 | 1 | Cam arm axle screw | 934060 |
| 19 | 1 | Cam arm axle washer | 934062 |
| 20 | 1 | Cam arm | 934025 |
| 21 | 1 | Cam arm axle | 934020 |
| 22 | 1 | Handle | 934030 |
| 23 | 1 | Butt | 934006 |
| 24 | 3 | Butt washer | 940039 |
| 25 | 3 | Butt screw | 942038 |

4" DN100 Pneumatic Bottom Valve

Art. VF9402



CHARACTERISTICS:

Complies with A.D.R. regulations

Complies with UNE EN 13308 regulations.

BVQI-E certified with certificate N°5000661-C-CPI

Body pressure tested at 750 kPa.

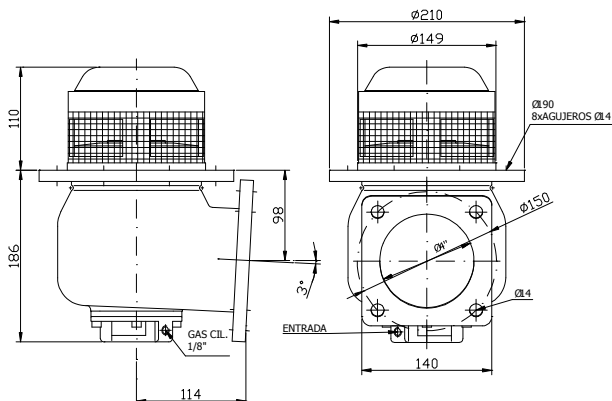
Has an easy to use emergency manual system for opening the valve in case of failure, due to lack of air in the circuit.

Weight: 5,05Kg

MATERIALS:

One piece body in treated lightweight aluminium alloy for long lasting and high performance. Internal components in stainless steel designed to offer better durability and performance.

Steel mesh that prevents dirt from getting into the tank's interior.



ACCESSORIES:

Flange Art. 940890EM

Flange gasket

Art. 940052N / 940052V

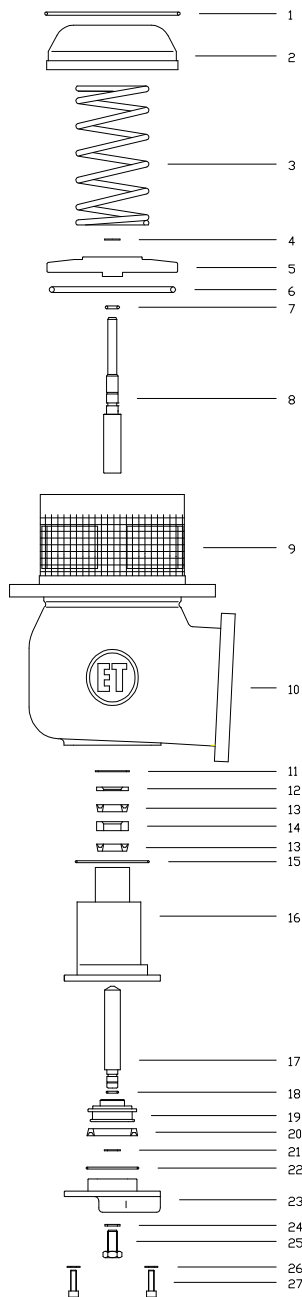
Square flange Art. 940891E

Square flange gasket

Art. 940053N / 940053V

4" DN100 Pneumatic Bottom Valve

Art. VF9402



| Fig. | Qty. | Description | Art. |
|------|------|----------------------------|--------|
| 1 | 1 | Hood fixing ring | 940034 |
| 2 | 1 | Hood | 940003 |
| 3 | 1 | Closing saucer spring | 940030 |
| 4 | 1 | Closing saucer seeger axle | 940071 |
| 5 | 1 | Closing saucer | 940012 |
| 6 | 1 | Saucer gasket | 940048 |
| 7 | 1 | Saucer axle gasket | 940044 |
| 8 | 1 | Closing saucer axle | 940023 |
| 9 | 1 | Mesh | 940090 |
| 10 | 1 | Body | 940001 |
| 11 | 1 | Seeger cylinder body | 940070 |
| 12 | 1 | Seal ring | 940082 |
| 13 | 2 | Piston axle seal | 940061 |
| 14 | 1 | Seal separator housing | 940080 |
| 15 | 1 | Cylinder body gasket | 940042 |
| 16 | 1 | Cylinder body | 940005 |
| 17 | 1 | Piston axle | 940016 |
| 18 | 1 | Piston axle gasket | 940048 |
| 19 | 1 | Piston | 940025 |
| 20 | 1 | Piston seal | 940060 |
| 21 | 1 | Seeger piston axle | 940071 |
| 22 | 1 | Butt gasket | 940040 |
| 23 | 1 | Butt | 940006 |
| 24 | 1 | Butt gasket washer | 940037 |
| 25 | 1 | Emergency plug | 940036 |
| 26 | 4 | Butt washer | 940039 |
| 27 | 4 | Butt screw | 942038 |

ACCESSORIES:

Emergency key Art. 940095

4" DN100 Sequential Pneumatic Bottom Valve Art. VF9422



CHARACTERISTICS:

Complies with A.D.R. regulations

Complies with EN 13308 regulations.

BVQI-E certified with certificate N°5000661-C-CPI.

Pneumatic command

Emergency manual operation.

Sequential pneumatic outlet for other device or opening sightglass.

Sequentiality acts once the shutter saucer is 75% open.

Body pressure tested at 750 kPa.

Air feed pressure 400 to 800 kPa.

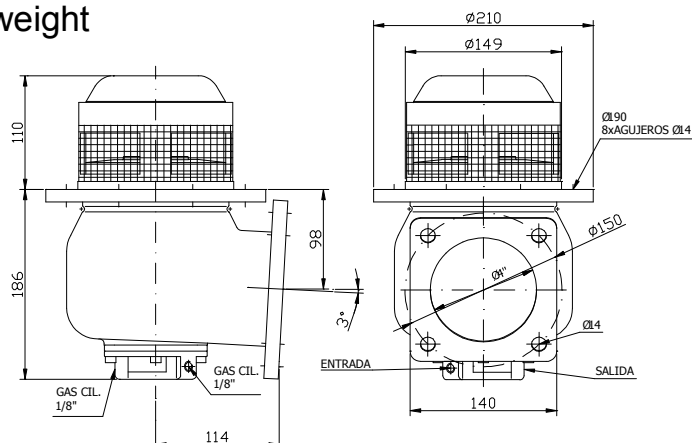
Weight: 5,05Kg

MATERIALS:

Body and components in treated lightweight aluminium alloy.

Axles and spring in stainless steel.

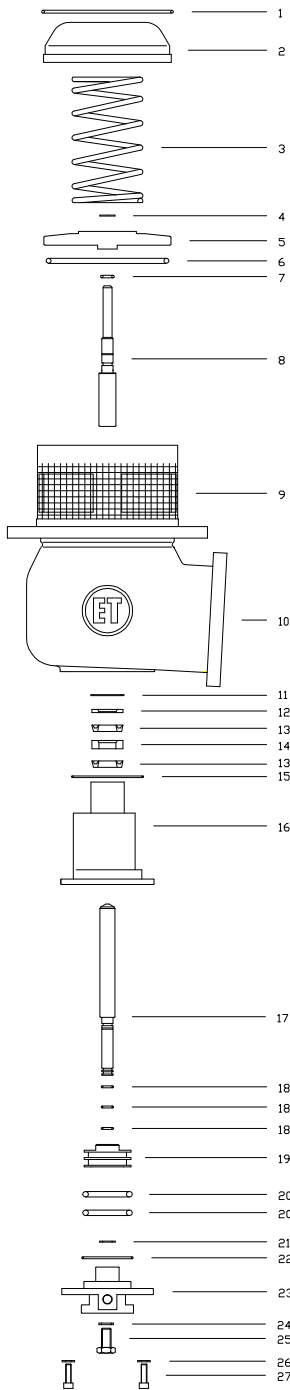
Gaskets in fluoroelastomer



ACCESSORIES:

| | | | |
|---------------|---------------|----------------------|------------------------|
| Flange | Art. 940890EM | Flange gasket | Art. 940052N / 940052V |
| Square flange | Art. 940891E | Square flange gasket | Art. 940053N / 940053V |

4"DN100 Sequential Pneumatic Bottom valve Art. VF9422



| Fig. | Qty. | Description | Art. |
|------|------|-------------------------------|--------|
| 1 | 1 | Hood fixing screw | 940034 |
| 2 | 1 | Hood | 940003 |
| 3 | 1 | Closing saucer spring | 940030 |
| 4 | 1 | Closing saucer seeger axle | 940071 |
| 5 | 1 | Closing saucer | 940012 |
| 6 | 1 | Saucer gasket | 940048 |
| 7 | 1 | Saucer axle gasket | 940044 |
| 8 | 1 | Closing saucer axle | 940023 |
| 9 | 1 | Filter mesh | 940090 |
| 10 | 1 | Body | 940001 |
| 11 | 1 | Seeger cylinder body | 940070 |
| 12 | 1 | Seal ring | 940082 |
| 13 | 2 | Piston axle seal | 940061 |
| 14 | 1 | Seal separator housing | 940080 |
| 15 | 1 | Cylinder body gasket | 940042 |
| 16 | 1 | Sequential cylinder body | 942005 |
| 17 | 1 | Sequential piston axle | 942016 |
| 18 | 3 | Piston axle gasket | 940048 |
| 19 | 1 | Sequential piston | 942025 |
| 20 | 2 | Piston gasket | 942060 |
| 21 | 1 | Sequential piston seeger axle | 940071 |
| 22 | 1 | Butt gasket | 940040 |
| 23 | 1 | Sequential butt | 942006 |
| 24 | 1 | Butt gasket washer | 940037 |
| 25 | 1 | Emergency plug | 940036 |
| 26 | 4 | Butt washer | 940039 |
| 27 | 4 | Butt screw | 942038 |

ACCESSORIES:

Emergency key Art. 940095

4" DN100 Mechanical Bottom Valve

Art. VF9440



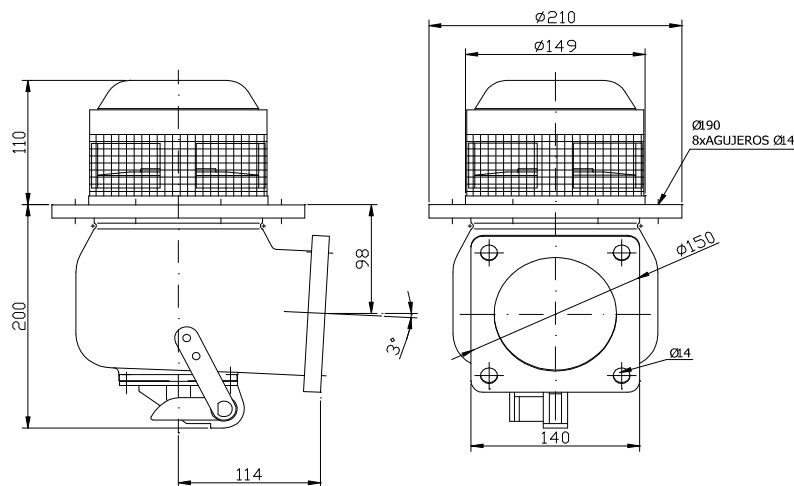
Weight: 5,1 Kg

CHARACTERISTICS:

Complies with A.D.R. regulations.
Complies with EN 13308 regulations.
Manual operation.
Body pressure tested at 750 kPa.

MATERIALS:

Body and components in treated lightweigh aluminium alloy.
Axles and spring in stainless steel.
Gaskets in fluoroelastomer.

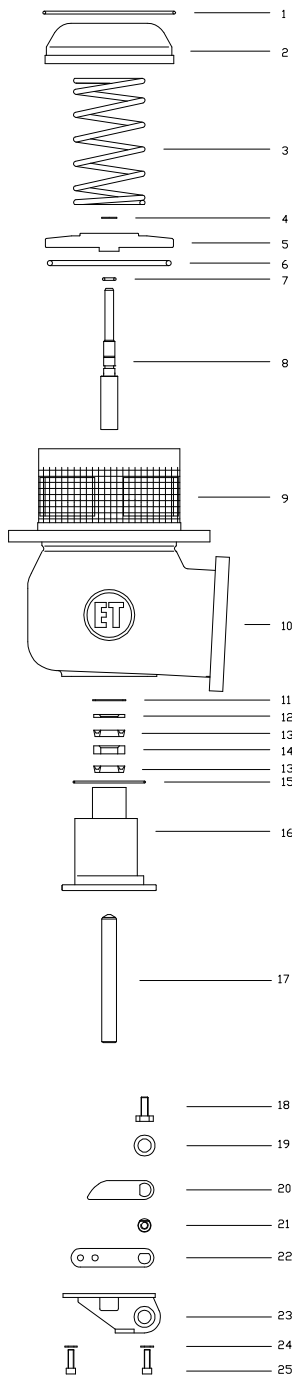


ACCESSORIES:

| | | | |
|---------------|---------------|----------------------|------------------------|
| Flange | Art. 940890EM | Flange gasket | Art. 940052N / 940052V |
| Square flange | Art. 940891E | Square flange gasket | Art. 940053N / 940053V |

4" DN100 Mechanical Bottom Valve

Art. VF9440



| Fig. | Qty. | Description | Art. |
|------|------|----------------------------|--------|
| 1 | 1 | Hood fixing ring | 940034 |
| 2 | 1 | Hood | 940003 |
| 3 | 1 | Closing saucer spring | 940030 |
| 4 | 1 | Closing saucer seeger axle | 940071 |
| 5 | 1 | Closing saucer | 940012 |
| 6 | 1 | Saucer gasket | 940048 |
| 7 | 1 | Saucer axle gasket | 940044 |
| 8 | 1 | Closing saucer axle | 940023 |
| 9 | 1 | Filter mesh | 940090 |
| 10 | 1 | Body | 940001 |
| 11 | 1 | Seeger cylinder body | 940070 |
| 12 | 1 | Seal ring | 940082 |
| 13 | 2 | Piston axle seal | 940061 |
| 14 | 1 | Seal separator housing | 940080 |
| 15 | 1 | Cylinder body gasket | 940042 |
| 16 | 1 | Cylinder body | 934005 |
| 17 | 1 | Intermediate axle | 944016 |
| 18 | 1 | Cam arm axle screw | 934060 |
| 19 | 1 | Cam arm axle washer | 934062 |
| 20 | 1 | Cam arm | 934025 |
| 21 | 1 | Cam arm axle | 934020 |
| 22 | 1 | Handle | 934030 |
| 23 | 1 | Butt | 934006 |
| 24 | 3 | Butt washer | 940039 |
| 25 | 3 | Butt screw | 942038 |

ACCESSORIES:

Emergency key Art. 940095

4" Low Profile Sequential Pneumatic Bottom Valve Art. VF9422MP



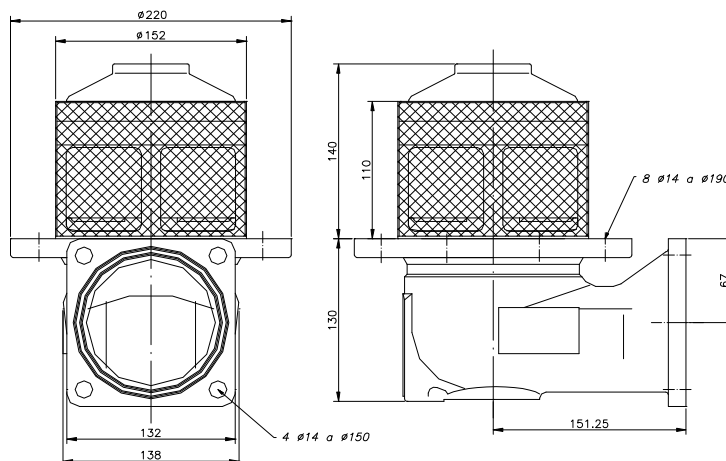
Weight: 4,8Kg

CHARACTERISTICS:

Complies with A.D.R. regulations.
Complies with EN 13308 regulations.
Pneumatic command.
Emergency manual operation.
Sequential pneumatic outlet for other device or opening sightglass.
Body pressure tested at 750 kPa.

MATERIALS:

Body and components in treated lightweight aluminium alloy.
Axles and spring in stainless steel.
Gaskets in fluoroelastomer "vitón".

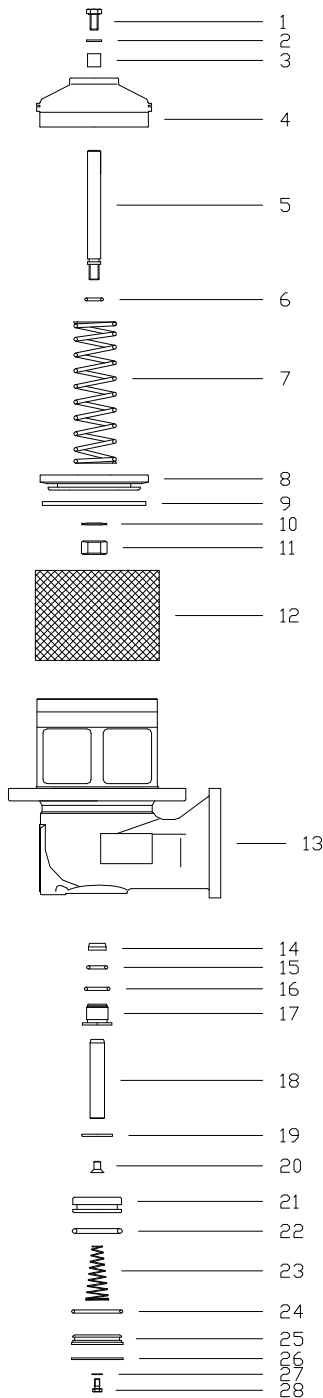


ACCESSORIES:

TTMA Sump flange Art. 940887
Flange Art. 940890EM
Square flange Art. 940891E

EN Sump flange Art. 940888
Flange gasket Art. 940052N / 940052V
Square flange gasket Art. 940053N / 940053V

4" Low Profile Sequential Pneumatic Bottom Valve Art. VF9422MP



| Fig. | Qty. | Description | Art. |
|------|------|---------------------------|---------|
| 1 | 1 | Hex screw | 94LP042 |
| 2 | 1 | Washer | 94LP043 |
| 3 | 2 | Saucer axle housing guide | 94LP038 |
| 4 | 1 | Hood | 94LP003 |
| 5 | 1 | Hood axle | 94MP009 |
| 6 | 1 | Saucer axle gasket | 94LP010 |
| 7 | 1 | Closing spring | 94LP030 |
| 8 | 1 | Closing saucer | 94MP012 |
| 9 | 1 | Closing gasket | 94LP036 |
| 10 | 1 | Saucer nut washer | 94MP045 |
| 11 | 1 | Saucer nut | 94MP044 |
| 12 | 1 | Filter mesh | 94LP037 |
| 13 | 1 | Body | 94MP001 |
| 14 | 1 | Piston axle scratcher | 94LP013 |
| 15 | 1 | Piston axle gasket | 94LP014 |
| 16 | 1 | Housig gasket | 94LP019 |
| 17 | 1 | Piston axle housing guide | 94MP017 |
| 18 | 1 | Piston axle | 94MP015 |
| 19 | 1 | Butt saucer | 94LP016 |
| 20 | 1 | Saucer fixing screw | 94LP020 |
| 21 | 1 | Piston | 94LP025 |
| 22 | 1 | Piston gasket | 94LP011 |
| 23 | 1 | Sequential piston spring | 94LP034 |
| 24 | 1 | Butt gasket | 94LP018 |
| 25 | 1 | Butt | 94MP006 |
| 26 | 1 | Seeger butt | 94LP039 |
| 27 | 1 | Metal rubber gasket | 94LP041 |
| 28 | 1 | Butt plug | 94LP040 |

ACCESSORIES:

Emergency key Art. 94MP095

4" Sequential Emergency Valve

Art. VF94MP



Weight: 4,8Kg

CHARACTERISTICS:

Complies with EN 13308 regulations.

Pneumatic command.

BVQI-E certified with certificate N° 5000661-C1-CPI.

Sequential pneumatic outlet for other device or opening sightglass.

Has an easy to use emergency manual system for opening the valve

Body pressure tested at 750 kPa.

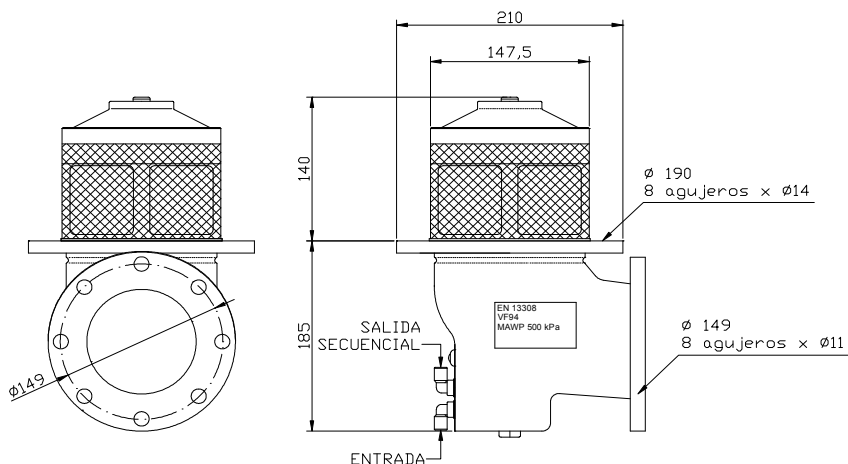
MATERIALS:

Body and components in treated light aluminium alloy.

Axles and springs in stainless steel.

Steel mesh that prevents dirt from getting into the tank's interior.

Gaskets in fluoroelastomer.



ACCESSORIES:

TTMA Sump flange Art. 940887

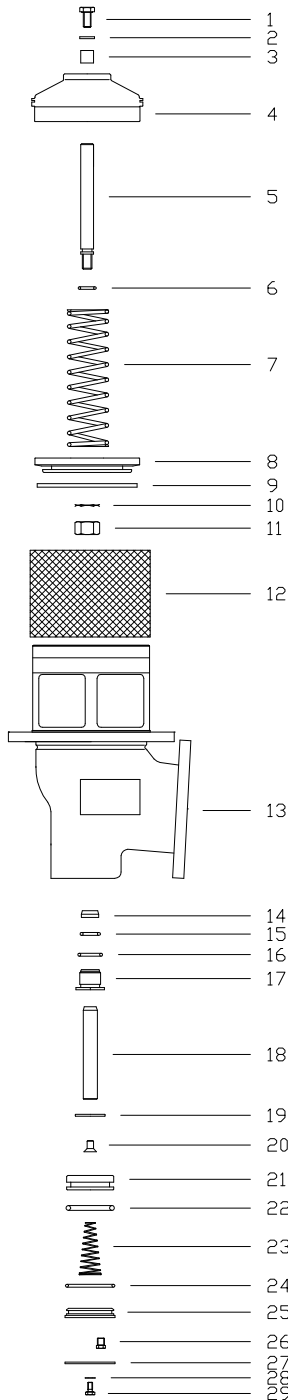
TTMA Flange Art. 740890

Flange gasket Art. 94SP0890

TTMA flange gasket Art. 740078

4" Sequential Emergency Valve

Art. VF94MP



| Fig. | Qty. | Description | Art. |
|------|------|---------------------------|---------|
| 1 | 1 | Hex screw | 94LP042 |
| 2 | 1 | Washer | 94LP043 |
| 3 | 2 | Saucer axle housing guide | 94LP038 |
| 4 | 1 | Hood | 94LP003 |
| 5 | 1 | Hood axle | 94MP009 |
| 6 | 1 | Saucer axle gasket | 94LP010 |
| 7 | 1 | Closing spring | 94LP030 |
| 8 | 1 | Closing saucer | 94MP012 |
| 9 | 1 | Closing gasket | 94LP036 |
| 10 | 1 | Saucer nut washer | 94MP045 |
| 11 | 1 | Saucer nut | 94MP044 |
| 12 | 1 | Filter mesh | 94LP037 |
| 13 | 1 | Body | 94SP001 |
| 14 | 1 | Piston axle srtacher | 94LP013 |
| 15 | 1 | Piston axle gasket | 94LP014 |
| 16 | 1 | Housing gasket | 94LP019 |
| 17 | 1 | Piston axle housing guide | 94MP017 |
| 18 | 1 | Piston axle | 94SP015 |
| 19 | 1 | Butt saucer | 94LP016 |
| 20 | 1 | Saucer fixing screw | 94LP020 |
| 21 | 1 | Piston | 94LP025 |
| 22 | 1 | Piston gasket | 94LP011 |
| 23 | 1 | Seeger butt | 94LP034 |
| 24 | 1 | Butt gasket | 94LP018 |
| 25 | 1 | Butt | 94SP006 |
| 26 | 1 | Temperature fuse | 94SP050 |
| 27 | 1 | Seeger butt | 94LP039 |
| 28 | 1 | Metal rubber gasket | 94LP041 |
| 29 | 1 | Butt plug | 94LP040 |

ACCESSORIES:

Emergency key Art. 94SP095

4" Extra Low Profile Sequential Pneumatic Bottom Valve Art. VF9422LP



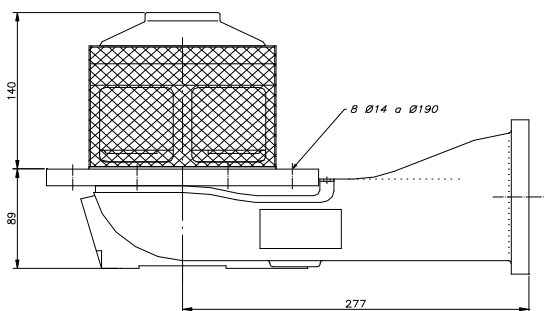
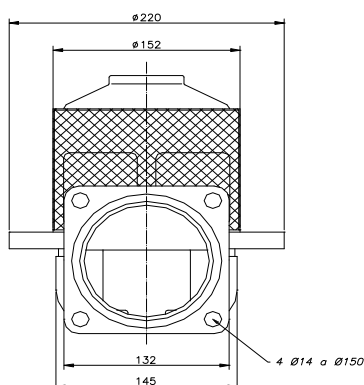
Weight: 5,15Kg

CHARACTERISTICS:

Complies with A.D.R. regulations
Complies with EN 13308 regulations.
Pneumatic command.
Emergency manual operation.
Sequential pneumatic outlet for other device or opening sightglass.
Body pressure tested at 750 kPa..

MATERIALS:

Body and components in treated lightweight aluminium alloy.
Axles and spring in stainless steel.
Gaskets in fluoroelastomer "vitón".

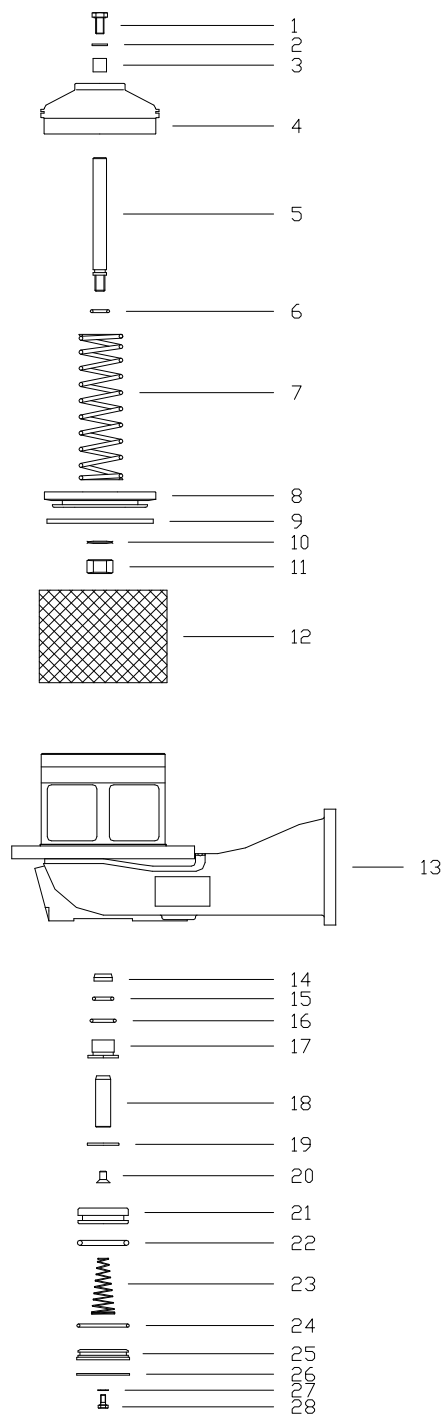


ACCESSORIES:

TTMA Sump flange Art: 940887
Flange Art: 940890EM
Square flange Art: 940891E

EN Sump flange Art: 940888
Flange gasket Art: 940052N / 940052V
Square flange gasket Art: 940053N / 940053V

4" Extra Low Profile Sequential Pneumatic Bottom Valve Art. VF94LP



| Fig. | Qty. | Description | Art, |
|------|------|---------------------------|---------|
| 1 | 1 | Hex screw | 94LP042 |
| 2 | 1 | Washer | 94LP043 |
| 3 | 2 | Saucer axle housing guide | 94LP038 |
| 4 | 1 | Hood | 94LP003 |
| 5 | 1 | Saucer axle | 94LP009 |
| 6 | 1 | Saucer axle gasket | 94LP010 |
| 7 | 1 | Closing spring | 94LP030 |
| 8 | 1 | Closing saucer | 94LP012 |
| 9 | 1 | Closing gasket | 94LP036 |
| 10 | 1 | Saucer nut washer | 94MP045 |
| 11 | 1 | Saucer nut | 94MP044 |
| 12 | 1 | Filter mesh | 94LP037 |
| 13 | 1 | Body | 94LP001 |
| 14 | 1 | Piston axle scratcher | 94LP013 |
| 15 | 1 | piston axle gasket | 94LP014 |
| 16 | 1 | Housing gasket | 94LP019 |
| 17 | 1 | Piston axle housing guide | 94LP017 |
| 18 | 1 | piston axle | 94LP015 |
| 19 | 1 | Butt saucer | 94LP016 |
| 20 | 1 | Saucer fixing screw | 94LP020 |
| 21 | 1 | Piston | 94LP025 |
| 22 | 1 | Piston gasket | 94LP011 |
| 23 | 1 | Sequential piston spring | 94LP034 |
| 24 | 1 | Butt gasket | 94LP018 |
| 25 | 1 | Butt | 94LP006 |
| 26 | 1 | Seeger butt | 94LP039 |
| 27 | 1 | Metal rubber gasket | 94LP041 |
| 28 | 1 | Butt plug | 94LP040 |

ACCESSORIES:

- Emergencia key Art. 94MP095

Sump flange for bottom valve

Art. 940887 / 940888



Weight: 1,69 Kg

Manufactured in carbon steel.

4" diameter TW (EN).

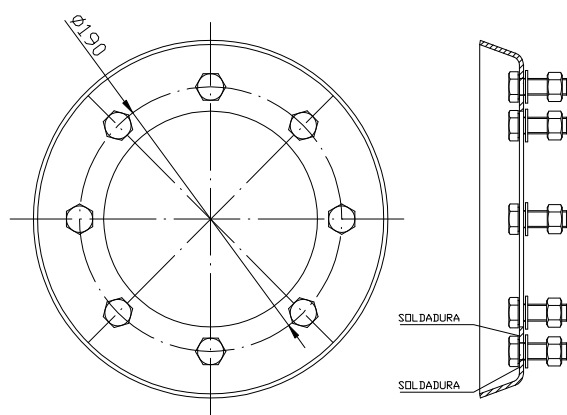
Diameter between centers 7,25" Art: 940887

Diameter between centers 190 mm Art:
940888

Welded to the bottom part of the tanker.

Compatible with EQUIPTANK's VF94 series.

The sump flange is branded with the art.
number 940887 / 940888 and with the
EQUIPTANK logo.



APPROVALS:

According to TTMA

According to EN

Tank flanges / gaskets

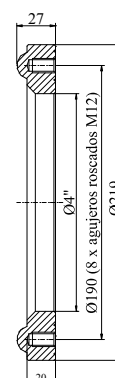
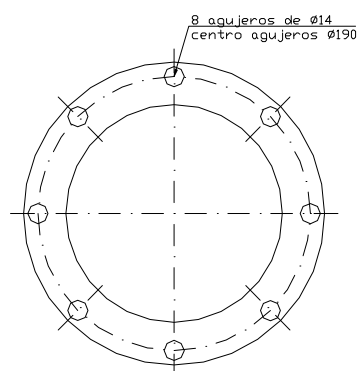


Steel tank flange

Art: 940890FE

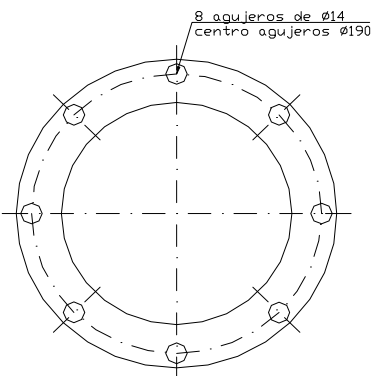
Aluminium tank flange

Art: 940890EM



NBR tank flange gasket

Art: 940052N



“Vitón” tank flange gasket

Art: 940052V

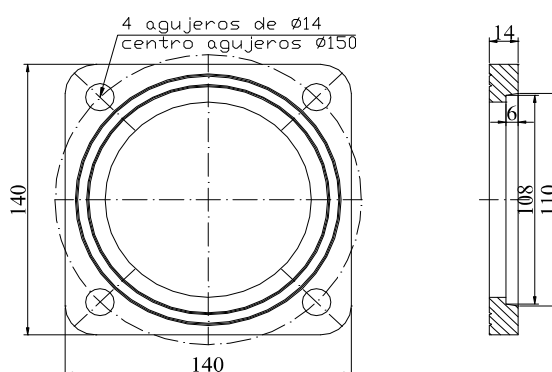
Square flanges / gaskets



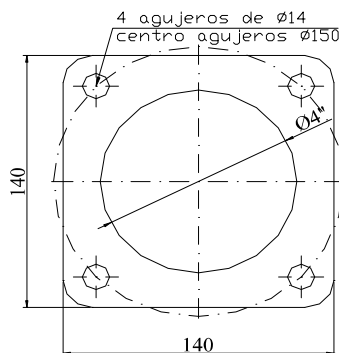
Steel square flange

Art: 940891H

Cast aluminium square flange Art: 940891E



NBR square flange gasket Art: 940053N



"Vitón" square flange gasket Art: 940053V

4" Pneumatic Manifold

Art. VC4N



CHARACTERISTICS:

Designed for bottom loading according to API RP-1004.

Body constructed of aluminum alloy to reduce total weight.

Gravity discharge through the API valves and discharge of any compartment using pump and/or metering system, through the manifold.

Of easy installation.

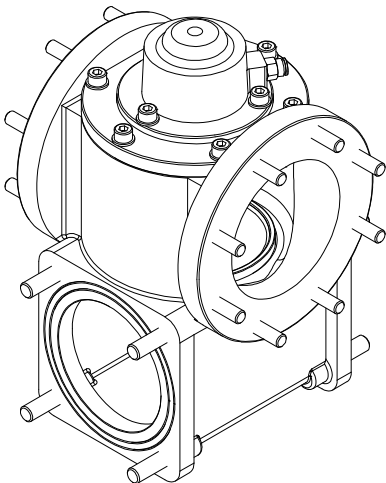


MATERIALS:

Body and components of aluminium alloy, treated and anodized.

Internal components made of stainless steel.

Gaskets made of fluoroelastomer.



GENERAL DIMENSIONS:

Total height: 630mm

Distance between round flanges: 360mm

Distance between square flanges: 340mm

Ø centers round flange: 150mm

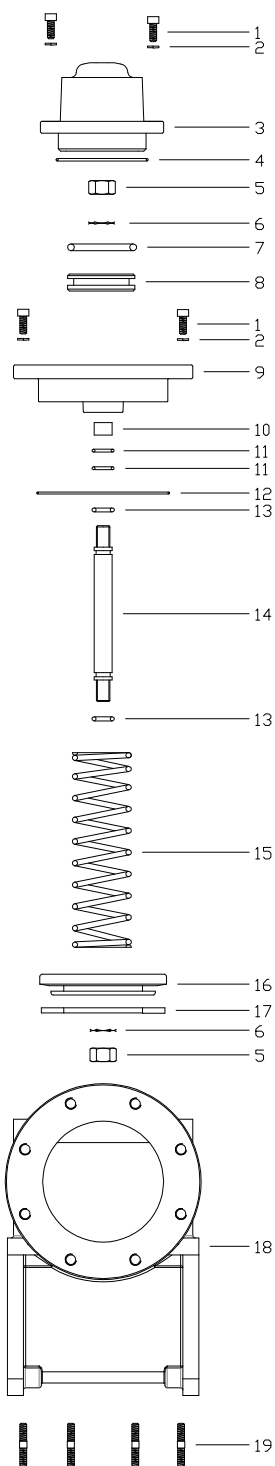
Ø centers square flange: 150mm



Weight: 8,25 Kg

4" Pneumatic Manifold

Art. VC4N



| Fig. | Qty. | Description | Art. |
|------|------|------------------------|----------|
| 1 | 9 | M8 allen screw | VC4N4012 |
| 2 | 9 | M8 glower washer | VC4N011 |
| 3 | 1 | Cylinder cover | VC4N005 |
| 4 | 1 | Cylinder cover o-ring | VC4N018 |
| 5 | 2 | M12 autolocking washer | VC4N014 |
| 6 | 2 | M12 toothed washer | VC4N013 |
| 7 | 1 | Piston o-ring | VC4N015 |
| 8 | 1 | Piston | VC4N003 |
| 9 | 1 | Butt | VC4N002 |
| 10 | 1 | Piston axle bushing | VC4N009 |
| 11 | 2 | Butt axle gasket | VC4N019 |
| 12 | 1 | Butt gasket | VC4N017 |
| 13 | 2 | Piston axle gasket | VC4N016 |
| 14 | 1 | Piston axle | VC4N004 |
| 15 | 1 | Closing spring | 94LP030 |
| 16 | 1 | Closing saucer | VC4N006 |
| 17 | 1 | Closing saucer gasket | VC4N007 |
| 18 | 1 | Manifold body | VC4N001 |
| 19 | 16 | Threaded stud | VC4N010 |



Flange gasket NBR



Square flange gasket NBR

Art. 740078N

Art. 940053N

3" Ball Valve flange / flange

Art. VB23BB



Weight: 3,85 Kg

CHARACTERISTICS:

Body pressure tested at 600 KPa.
Square flange outlet 140x140 m/m.

MATERIALS:

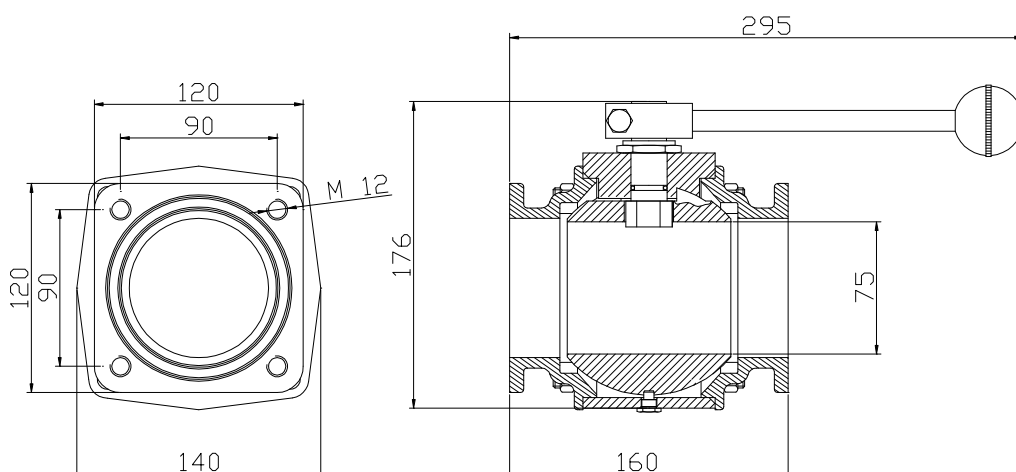
Body in extruded aluminium.

Components in treated lightweight aluminium alloy.

Axles and components in stainless steel.

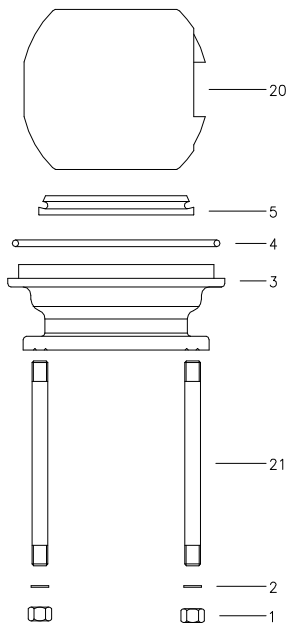
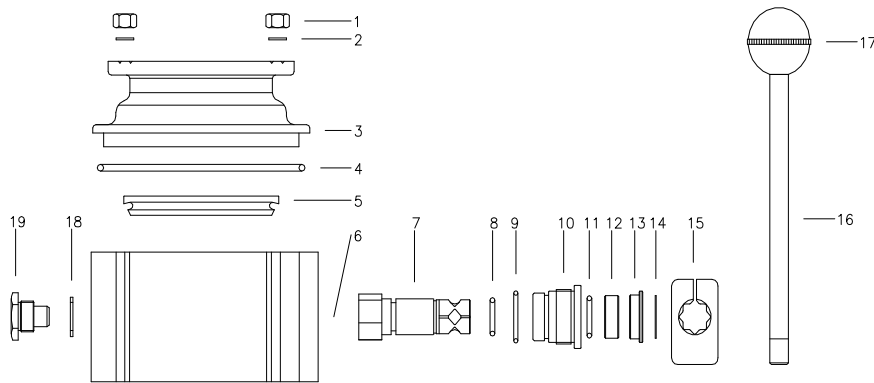
Internal axles and components in brass.

Gaskets in NBR / "Viton".



3" Ball Valve flange / flange

Art. VB23BB



Square flange gasket NBR

Art: 930053N

| Fig. | Qty. | Description | Art. |
|------|------|----------------------|--------|
| 1 | 8 | M10 Nut | 230056 |
| 2 | 8 | M10 Washer | 230057 |
| 3 | 1 | 3" flange outlet | 230005 |
| 4 | 2 | Body gasket | 230050 |
| 5 | 2 | 3" ball gasket | 230040 |
| 6 | 1 | Body | 230001 |
| 7 | 1 | Handle axle | 230020 |
| 8 | 1 | Internal axle gasket | 230045 |
| 9 | 1 | Axle body gasket | 230047 |
| 10 | 1 | Axle body | 230021 |
| 11 | 1 | External axle gasket | 230046 |
| 12 | 1 | Separator housing | 230022 |
| 13 | 1 | Seal housing | 230023 |
| 14 | 1 | Seeger ring | 230024 |
| 15 | 1 | Handle base | 230025 |
| 16 | 1 | Handle shank | 230030 |
| 17 | 1 | Handle knob | 230035 |
| 18 | 1 | Centering washer | 230017 |
| 19 | 1 | Ball centering | 230015 |
| 20 | 1 | 3" Ball | 230010 |
| 21 | 4 | Flange stud | 230055 |

3" Ball Valve flange / thread

Art. VB23BR



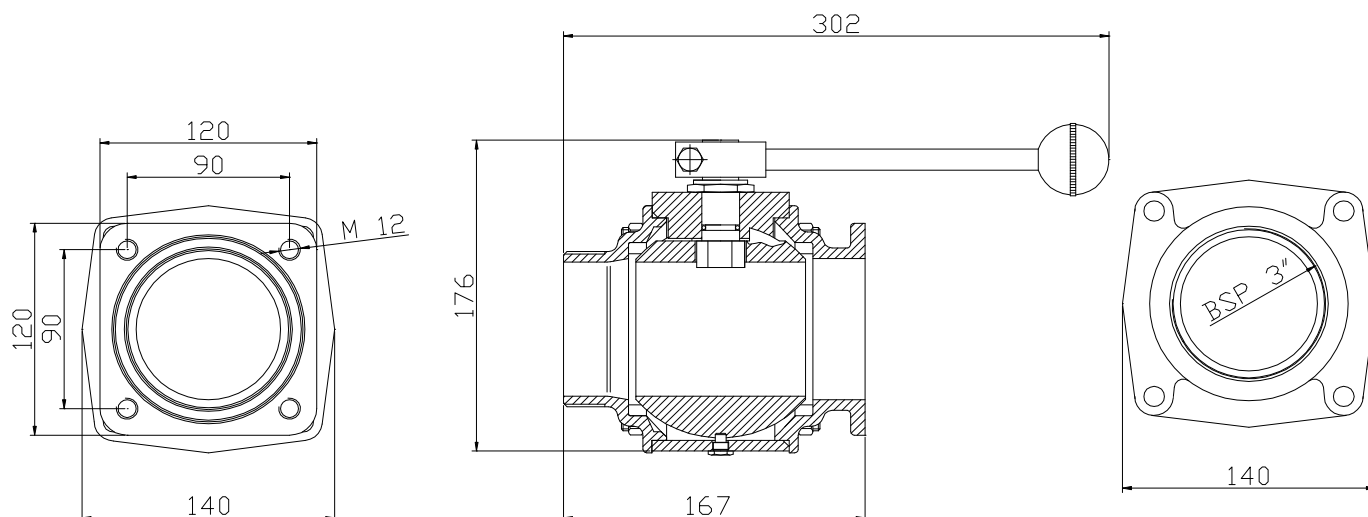
Weight: 3,85 Kg

CHARACTERISTICS:

Body pressure tested at 600 KPa.
3" BSP threaded flange outlet.

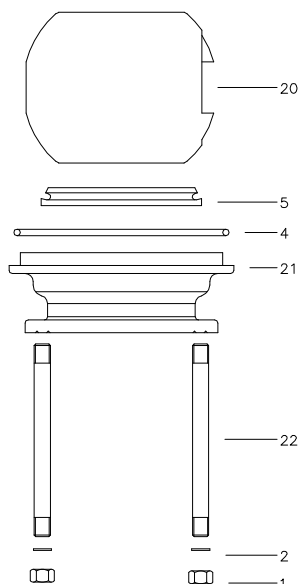
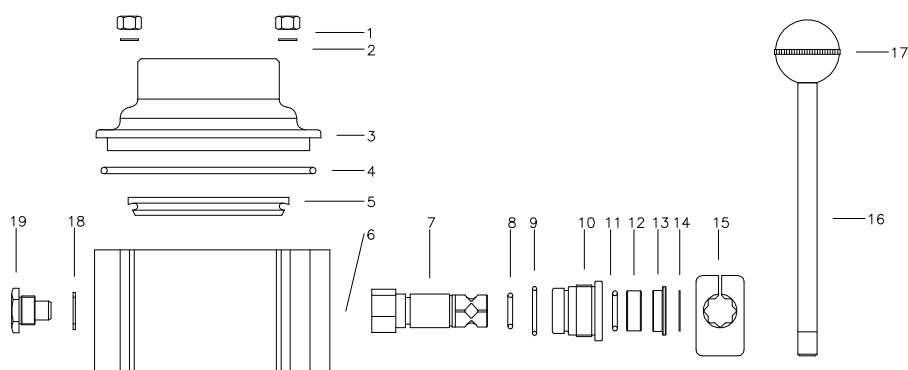
MATERIALS:

Body in extruded aluminium.
Components in treated lightweight aluminium alloy.
Axles and components in stainless steel.
Axle and internal components in brass.
Gaskets in NBR / "Viton".



3" Ball Valve flange / thread

Art. VB23BR



Square flange gasket NBR

Art: 930053N

| Fig. | Qty. | Description | Art. |
|------|------|----------------------|--------|
| 1 | 8 | M10 Nut | 230056 |
| 2 | 8 | M10 Washer | 230057 |
| 3 | 1 | 3" threaded outlet | 230008 |
| 4 | 2 | Body gasket | 230050 |
| 5 | 2 | 3" Ball gasket | 230040 |
| 6 | 1 | Body | 230001 |
| 7 | 1 | Handle axle | 230020 |
| 8 | 1 | Internal axle gasket | 230045 |
| 9 | 1 | Axle body gasket | 230047 |
| 10 | 1 | Axle body | 230021 |
| 11 | 1 | External axle gasket | 230046 |
| 12 | 1 | Separator housing | 230022 |
| 13 | 1 | Seal housing | 230023 |
| 14 | 1 | Seeger ring | 230024 |
| 15 | 1 | Handle base | 230025 |
| 16 | 1 | Handle shank | 230030 |
| 17 | 1 | Handle knob | 230035 |
| 18 | 1 | Centering washer | 230017 |
| 19 | 1 | Ball centering | 230015 |
| 20 | 1 | 3" Ball | 230010 |
| 21 | 1 | 3" Flange | 230005 |
| 21 | 4 | Flange stud | 230055 |

Pneumatic Control System

The VFC pneumatic control system units are modular in design. Their function is to open and close the safety and vapor vent valves. The emergency brake allows fast closing of said valves.

EQUIPTANK's pneumatic control system is made up of the following elements:

Stainless steel control panel.

Pressure gauge: indicates existing pressure in the panel.

Manually operated pneumatic valve that ensures the opening of the safety and vent valves.

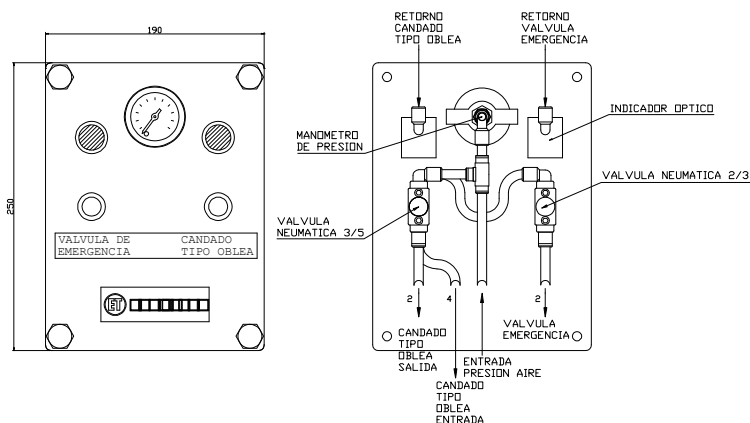
Quick escape valve: executes a quick discharge of the valve's supply circuit.

The optic indicator shows the status of the bottom valve.

Green indicator means the valve is open.

Black indicator means the valve is closed.

Flexible tubes for the air system, in various colors, for easy recognition and differentiation of the circuits.



1 compartment panel example



Art. VFC10STM

Pneumatic Control System

EXAMPLE VFC 1 0 S T M

PRODUCT FAMILY

VFC = Pneumatic control system

COMPARTMENT NUMBER

1 = 1 compartment
2 = 2 compartment
X = N° compartment

EMERGENCY STOP

E = With emergency stop
0 = Without emergency stop

SEQUENTIAL

S = Sequential
0 = Non sequential

WAFER SYSTEM

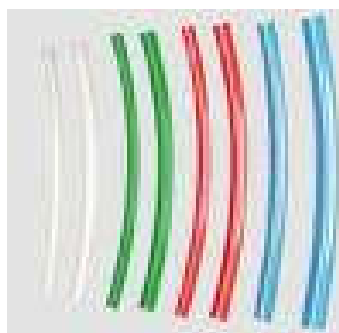
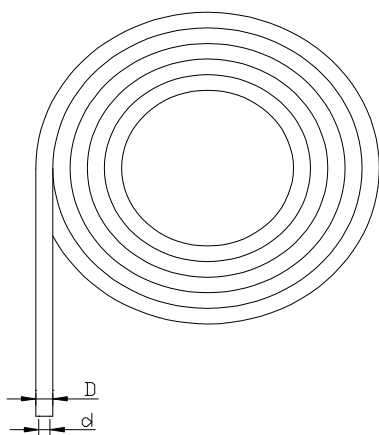
T = With wafer system
0 = Without wafer system

GAUGE

M = With gauge
0 = Without gauge

Air system installation

Art. CTN6 / CTN7 / CTN8 / CTN9



CHARACTERISTICS:

These type of polyurethane pipes are suitable for pneumatic, robotic and industrial machinery piping, especially when great flexibility is required.

Characteristics:

Working pressure: 26 bar, -40°C / +70°C

Test pressure: 90 bar

Breaking radius: 30 mm.

Supplied in different colors for ease of installation.

Emergency brake button

Art. VFC327

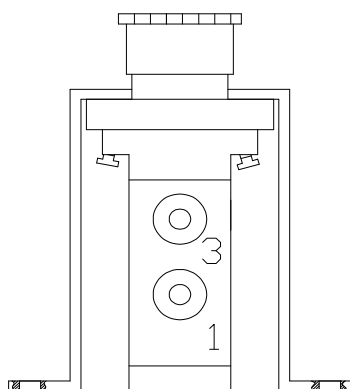
CHARACTERISTICS:

Emergency brake: closes the pneumatic system in case of emergency.

The system can be restarted, once the danger is over, from the pneumatic control panel.

Air connections for Ø6 mm pipes.

Can be fitted in different parts of the truck for ease of access.



Filter Regulator/Lubricator

Art. VFC035V2

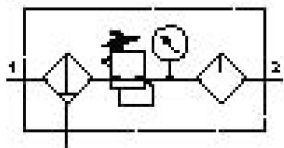
- Regulator and lubricator filter in one unit.
- High flow and efficiency in retention of dirt particles.
- Good regulation characteristics with low hysteresis..
- Lockable head to ensure the set values.
- Rotary knob with integrated lock.
- With semi-automatic condensation drain with pressure gauge.

Technical Data:

- Pneumatic connection G ¼
- Fixing type: With accesories / in-line mounting.
- Pressure regulation range: 0,5...7 bar / 0,5...12 bar
- Maximum condensation : 22 cm3

Materials:

- Body: Die-cast zinc.
- Mother board: Die-cast zinc / aluminium
- Deposit: Polycarbonate.
- Seals: Nitrile



Options:

- Art. VFC0352V2 Fixing bracket
- Art. VFC0355V2 Fixing nut

Product Indicator

Art: CGI4012



MATERIALS:

Body of treated light aluminium alloy.
Spring and components of stainless steel
and treated steel.

Plastic knob.

Methacrylate sightglass.

GENERAL DIMENSIONS:

Total length 153 mm.

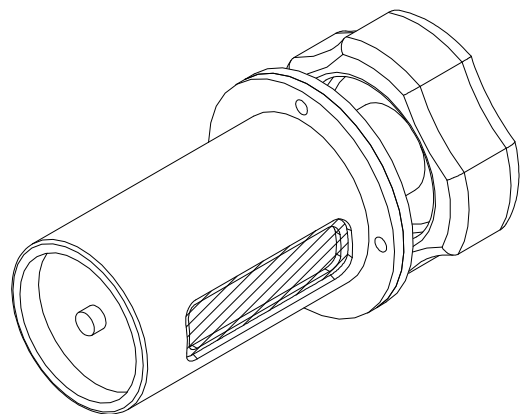
Maximum diameter 79 mm.

Minimum diameter 58 mm.

OPTIONS:

Customized labels.

8 or 10 positions (products).



PRECINTANK ICC

PRECINTANK is a loading and unloading monitoring unit, that allows for load control during the complete process of transport and delivery of petroleum products.

The system works separately from the normal operation of the tank truck, thus never interfering with it, and can be installed in tankers of one to ten compartments.

The system has been designed to offer maximum security and adaptability in its working environment.

It represents a complete solution for all the sector's needs providing information of the distribution, loading, unloading, important events and productivity control.



Safety Features:

Cargo control during transportation, quantity and quality wise.

Work Safety: avoids worker from having to climb to the top part of the tanker to verify existing fuel level.

VOC emissions: avoids emissions of environmentally hazardous particles to the atmosphere due to unauthorized openings.

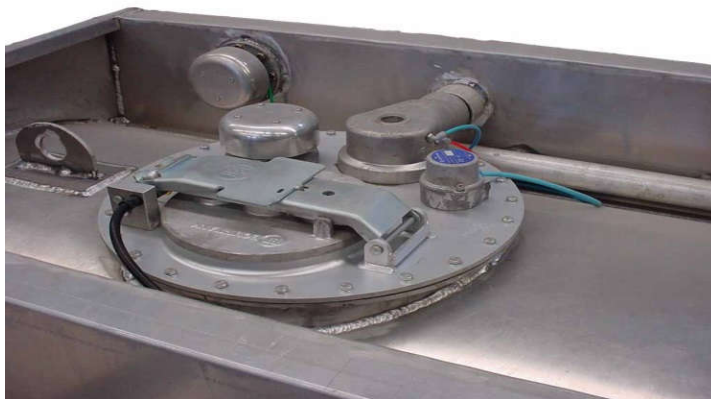
Detection of retained product in the pipes and compartments (optional).

PRECINTANK ICC.

Cargo Control:

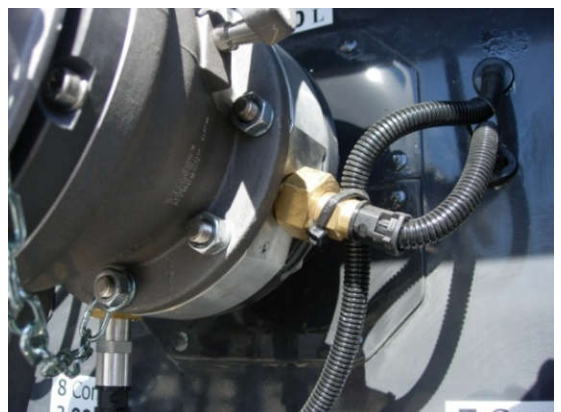
Avoids theft and manipulation of the product transported by monitoring the sensors placed at all the possible openings of the tanker.

All sensors used are namur type (which allows to see if the sensor is open, closed or shortcircuited), Sick or Turck brands, with Ex II2(1)G Ex ia (ib) IIC T6 certification.



API valve sensor: The movement sensor detects opening and closing of the valve. Sensitivity is adjustable.

The wet sensor detects the existence of product inside the pipes and / or inside the compartments.



PRECINTANK ICC.

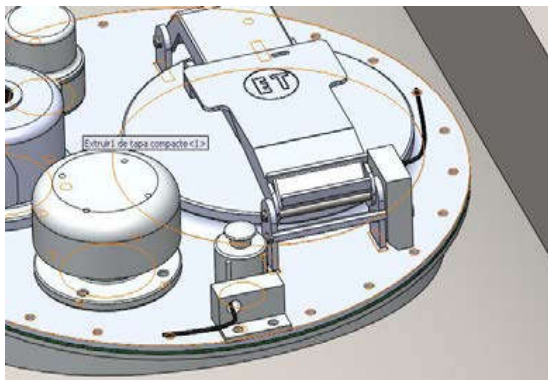
Cargo Control:



Bottom valve sensor: internally fitted to avoid tampering.

Sensor detects opening and closing of the valve (optional).

Manhole cover sensor: detects opening and closing.



Pressure relieve cap sensor: detects opening (optional).

PRECINTANK ICC.

Characteristics:

Bluetooth wireless module for data unloading.

Rechargeable Lithium Ion battery. 72 H battery life.

Internal power source to feed the whole system in intrinsic security and to safely recharge the battery. Ex II2(1)G e mb Ex ib(ia) IIA T4 Certification.

Graphic LCD screen with back light. Display can be configured to suit the client's requirements.

2 GB to 4GB internal memory for registration and storage of events.

Precitank software for HP iPAQ Pocket PC type.

GPS location module (optional).

System developed in accordance with the directives of european regulation EN 15208:2009 for electronic seals.



Equiptank Engineering, S.L.

Pol. Ind. La Serra
Parcelas 11 a 14
25320 Anglesola
(Lérida, Spain)
Telf. +34.973.30.80.41
Fax +34.973.30.81.06

Comercial Gasso, S.A.

Pol. Ind. Can Calderón,
C/ Murcia, 35 N-C.
08830 St.Boi del LL. (Barcelona,
Spain)
Telf. +34.936.52.98.00
Fax +34.936.52.98.04

Equiptank Engineering, S.L. is member of GASSO Group

The specifications in this catalog are for reference only and may contain typographical errors.
The company reserves the right to alter product specifications without notice