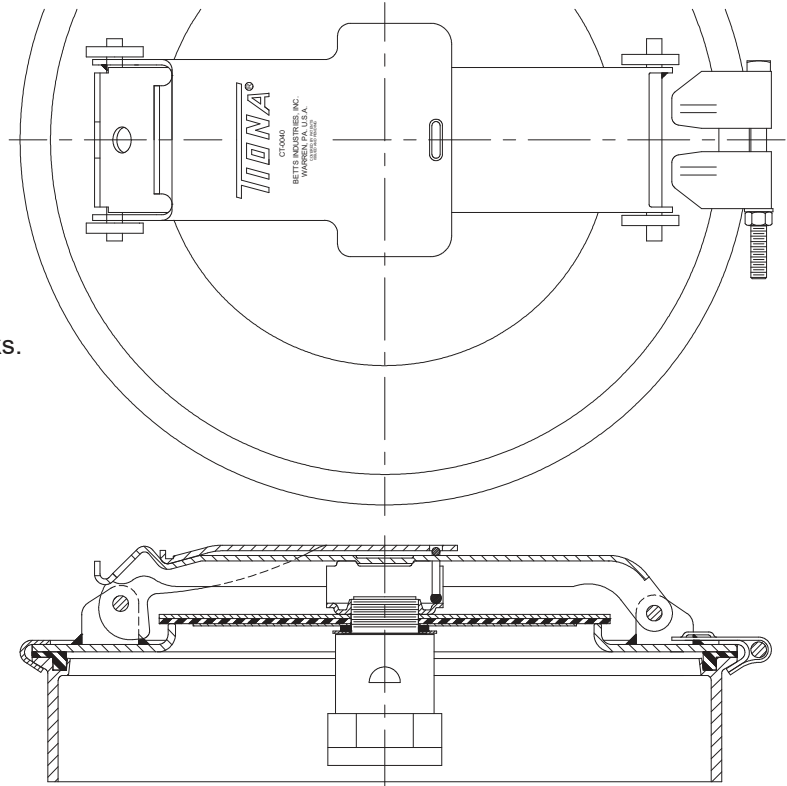




16" ROUND MANHOLE WITH 10" FILL

- LIGHT WEIGHT**
- LESS MAINTENANCE**
- LOW SILHOUETTE**

NOTE: Not legal for DOT specification cargo tanks.



Model 8016

The 16" Manhole is fabricated for lighter weight and greater strength. The advanced design has low silhouette and clean lines. Fill gasket will not pull out; is easily replaced. To compensate for wear, tension on fill cover is easily adjusted by adding shim washers. Hinge pins welded in place to prevent removal. Adequate means provided for use of seal wire. One outside clamping ring provides means for attaching cover to collar. Cover may be oriented throughout 360°. Secondary Latch is standard on all assemblies.

Cover Plate Fill Gasket Retainer Shim Washer	Clamping Ring Fill Cover Strongback Latch	Clamping Bolt and Washer	Clamping Bolt Nut	Vent	Wt.	Assembly No.
Steel	Steel	Steel Zinc Plt.	Brass	Alum.	20.5	FVA8016SXB
Steel Zinc Plt.	Steel Zinc Plt.	Steel Zinc Plt.	Brass	Alum.	20.5	FVA8016BXB
‡ Stnls 304	Steel Zinc Plt.	Steel Zinc Plt.	Brass	Alum.	20.7	FVA8016GXB
Stnls 304	Stnls 304	Stnls 304	Stnls 304	Alum.	20.7	FVA8016CXB
Stnls 316	Stnls 304*	Stnls 304	Stnls 304	Alum.	20.7	FVA8016DXB

‡ Fill Gasket Retainer and Shims-Aluminum

* Fill Cover Material-Stainless 316

Note: Manhole assemblies, as listed above, have a 6238AL vent (prefix "FVA") and Buna-N gaskets (suffix "B"). For variation or additional vents see catalog Section 95 for proper prefix or assembly number. For variation in gasketing change suffix as follows.

Suffix "V" indicates Viton gaskets.

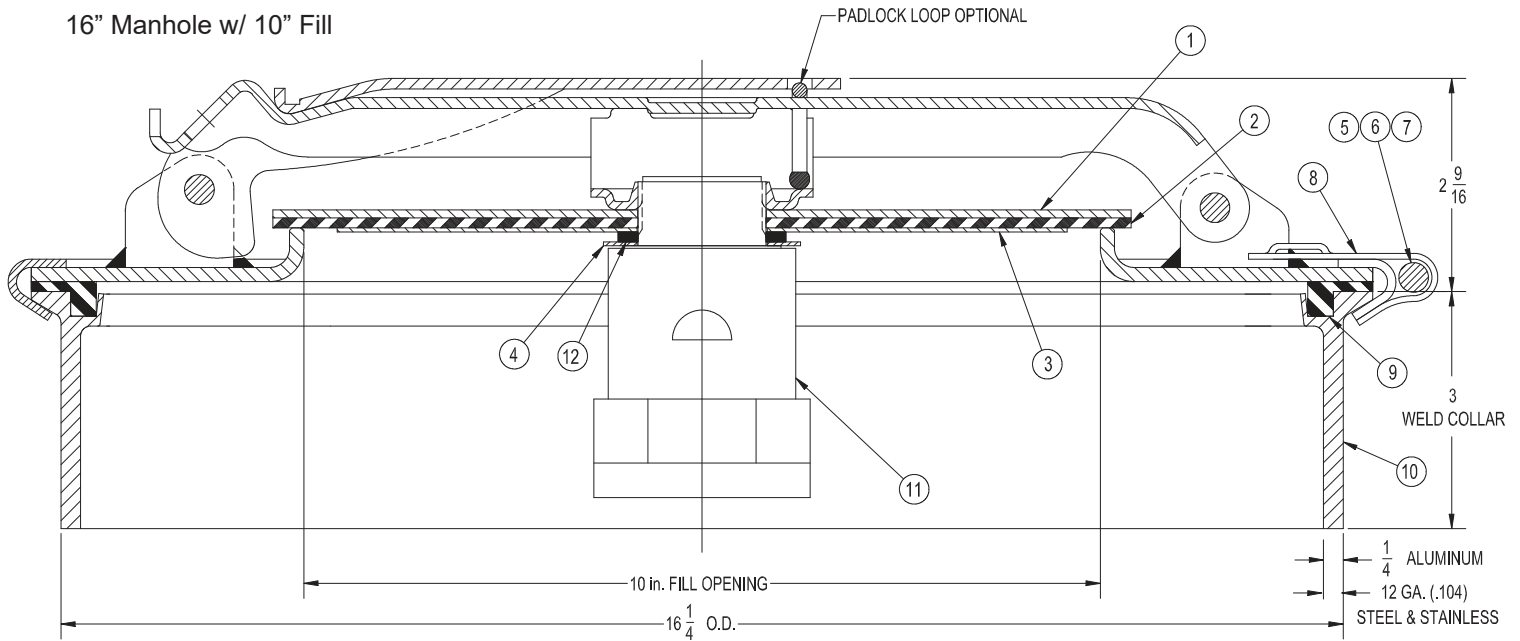
Suffix "W" indicates White Hypalon gaskets.

Suffix "T" indicates Teflon fill and collar gasket w/ White Hypalon backer

Manhole collars are available in aluminum, steel and stainless steel. Please see parts page for correct numbers. When welding collars to tank, care should be exercised to insure collar remains flat and round.

PARTS LIST

16" Manhole w/ 10" Fill



No.	Description	Material	Part No.
1	Fill Cover	Steel	3021MS
		Steel Zinc Plt.	3021ZC
		Stnls 304	3021SL
		Stnls 316	3021SS
2	Fill Gasket	Bethane	3024BU
		Viton	3024VT
		Wh. Hypalon	3024WH
		Non-Asbestos	3024NA
		Teflon	3024TF
3	Retainer	Steel	3213MS
		Aluminum	3213AL
		Stnls 304	3213SL
		Stnls 316	3213SS
4	Shim Washer	Steel	3023MS
		Aluminum	3023AL
		Stnls 316	3023SS
5	Bolt-Clamp	Steel Zinc Plt.	3029ZC
		Stnls 304	3029SL
6	Nut-Clamp 3/8 -16 Thd.	Brass	3030BR
		Stnls 304	9Q5809
7	Washer-Clamp	Steel Zinc Plt.	3031ZC
		Stnls 304	3031SL

No.	Description	Material	Part No.	
8	Clamping Ring	Steel	3028MS	
		Steel Zinc Plt.	3028ZC	
		Stnls 304	3028SL	
9	Manhole Gasket Channel Type	B	Buna-N	3559BN
		V	Viton	3559VT
		W	Wh. Hypalon	3559WH
		T	Teflon Env. w/ Wh. Hypalon	3025TF
10	Manhole Collar Channel Type	Steel	3057MS	
		1/4 Aluminum	3057AE	
		Stnls 304	3057SL	
		Stnls 316	3057SS	
11	Vent Assembly	Alum./Stnls	6238AL	
12	Gasket	Buna-N	3716BN	

Gasket Maximum Temperature

Bethane	250°F
Viton	400°F
White Hypalon	250°F
Teflon	400°F
Teflon Envelope w/ White Hypalon Insert	250°F
Non-Asbestos	350°F

MAINTENANCE: Manhole assemblies should be inspected with sufficient frequency and due regard to the products carried to insure a liquid tight closure. Any worn, damaged or missing parts must be replaced. Gaskets should be replaced if their effectiveness is impaired in any way. Replacement gaskets must be compatible with products carried. Adjustment due to gasket wear may be necessary to insure proper sealing of the 10" fill. A shim washer, item No. 4, is provided for this purpose. To increase the sealing force of the 10" fill, remove shim from location shown above and re-position it above fill cover No. 1.

WARNING Use only genuine Betts Industries Inc. replacement parts. Use of substitute parts can impair the proper functioning of this product.