

mod.

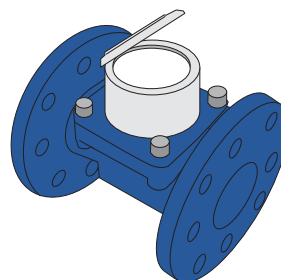
# IWM-MB4

MBUS wired module  
for meters with inductive interface

M-Bus



Compatible water meters



mod. WDE-K50

The IWM-MB4 is suitable for remote reading applications in a residential, commercial and industrial context. This is an MBUS module that allows the consumption of the meter to be acquired by connecting them to the network using the standard MBUS protocol, historically developed for remote meter reading.

The use of an inductive target at the counter excludes the possibility of magnetic fraud and makes the application insensitive to the vibrations of the pipes.

The IWM-MB4 is compatible with all the predisposed Woltmann type water meters and allows:

- Consumption analysis with reverse flow compensation that provides an always perfect alignment between the meter clockwork and the totalizer.
- Fraud control (removal of the radio module, application of external magnetic field, reverse flow, identification of system loss). Magnetic tampering of the counter, removal, exceeding of the reverse flow and loss threshold are recorded and signaled in the telegram transmitted by the module.
- IP68 protection\* allows the use of the module also for meters installed in harsh environments.
- NFC interface allows configuration and commissioning of the device with the use of a simple smartphone app.

<b>Compatible water meters</b>	WDE-K50
<b>Cable length</b>	1.5 m
<b>Protocol</b>	MBUS EN13757-2\3
<b>Sensitivity measure</b>	10 liters (up to DN125) or 100 liters (from DN125)
<b>Reverse flow</b>	Activate for the backward flow amount after user-settable threshold
<b>Battery</b>	Non-replaceable lithium, rechargeable (automatic recharge from the BUS network). Backup for measuring function in absence of BUS voltage
<b>Transmitted data</b>	Volume (consumption), alarms
<b>Alarms</b>	Discharged battery, module removal, magnetic fraud attempt, backward flow, leakage detection.
<b>Protection class</b>	IP68*
<b>Weight</b>	120 g
<b>Size (l x p x h, cable excluded)</b>	88 x 70 x 25 mm
<b>Working Temperature</b>	+1° / +55°C
<b>Module programming requirements</b>	Android device (smartphone, tablet, etc.) with an NFC interface and the NFC IWM Config APP freely downloadable from GOOGLE PLAY

\* IP68: maximum 24 hours of continuous submersion at 1 m depth