



PETROLEUM PRODUCT CATALOG

January 2024
Information subject to change

WE PROVIDE OUR CUSTOMERS WITH THE BEST PROTECTION AGAINST FUEL CONTAMINATION AROUND THE WORLD.

We Have 68 Years of Expertise

Cim-Tek Filtration has been developing superior products to protect your fuel for decades. It's what we do. While others spread their development efforts across a wide range of targets, we remain dedicated to developing products that promote cleaner fluids.

We're Still Family Owned and Operated

We Provide Service You Can Count On

We also remain dedicated to exceptional service. We've been the leading name in reliability since we launched our very first product 68 years ago. Our phone number connects you straight to our office in Illinois.

We've Been A Major Innovator Since Day 1

As the industry and performance requirements evolve, so do our filter designs and materials. We focus on providing products that stand up to the high cleanliness standards of today **and** tomorrow.

We Build Products Unmatched In

Value,
Reliability,
Performance,
And Technology.

With expansive distribution, a broad range of products, quick delivery times, and exceptional quality, we are ready to help you whether you are servicing machinery or manufacturing it.

CONTENTS

 201 N. CHAMPAIGN ST. BEMENT, IL 61813
 217.693.6555
 CUSTOMER SERVICE: 844.447.7663
 FAX: 217.693.6673
 INFO@CIM-TEK.COM
 WWW.CIM-TEK.COM

A REGISTERED ISO 9001:2015 COMPANY

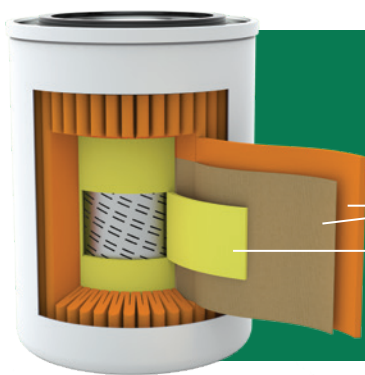
4	OUR MEDIAS
6	SELECTING A FILTER
8	WATER CONTAMINATION
10	PRODUCT TRACEABILITY
11	READING THE LABEL
12	SPIN ON FILTERS
15	- 250 SERIES
16	- 260 SERIES
17	- 260A SERIES
18	- 300 SERIES
19	- 400 SERIES
20	- 450 SERIES
21	- 475 SERIES
22	- 800 SERIES
23	- 800SL SERIES
24	MOUNTING ADAPTORS
26	CENTURIONS
28	D.E.F.-TEK
30	VIKINGS
32	VIKING BAG FILTER HOUSINGS
34	FUEL CLEANLINESS & MAINTENANCE
36	REPLACEMENT PARTS
37	INDEX

OUR FILTER MEDIAS

TODAY'S FUELS REQUIRE MORE THAN A "ONE-FILTER-FITS-ALL" SOLUTION

Detect Water & Remove Particulate

These filters capture particulate **and** detect excess water. When water-contaminated fuel passes through the filter, the media swells and restricts flow to notify the operator that water is present and action is required.

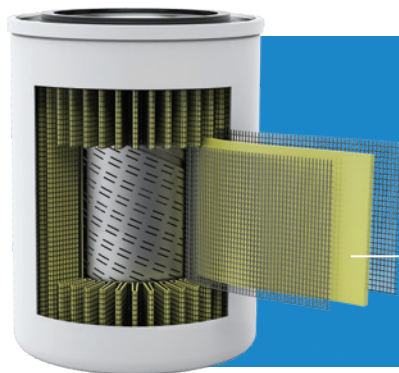


Multi-Fuel®

For Gasoline and Ethanol Blends up to 25%

Proprietary Microglass-Cellulose hybrid pleat pack

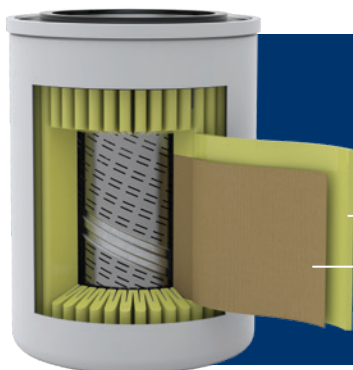
Advanced water **and** phase separation detection material between two Microglass layers restricts flow when water is detected



Hydroglass®

For Gasoline, Diesel/ULSD and Biodiesel Blends up to 20%, and 100% Biodiesel

Advanced water detection material between two Microglass layers restricts flow when water is detected



Hydrosorb®

For Gasoline, Diesel, and ULSD

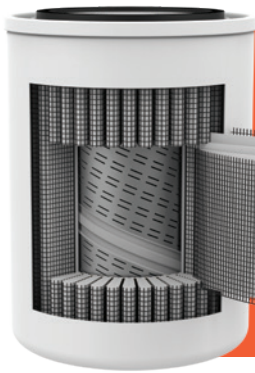
Proprietary Microglass-Cellulose hybrid pleat pack

Water detection material between Microglass-Cellulose laminate restricts flow when water is detected

We build our medias to meet the specific needs of the various fuels you filter, ensuring optimal protection against fuel contamination no matter what fuel you're filtering.

Remove Particulate

When contaminants such as dirt, rust, and microbial growth (non-liquid contamination) pass through the filter, the media captures the particulate.



Microglass

For Gasoline and Ethanol Blends up to 25%, Diesel/ULSD and Biodiesel Blends up to 20%, and 100% Biodiesel

- Spun bond synthetic material for support and filter media protection
- Coated steel wire for strength and rigidity
- Wet laid synthetic fibers



Cellulose

For Gasoline and Ethanol Blends up to 25%, Diesel, and ULSD

- Resin bound plant-based fiber material



Ultimate Defense

When you see the Ultimate Defense label (or the shield), you're seeing the best media we offer. Filters with this label all contain at least one layer of Microglass media. Compared to Cellulose, Microglass's synthetic fibers generally provide increased retention, lower clean filter differential pressure, and less resistance to fluid flow.

SELECTING A FILTER FOR YOUR APPLICATION

Selecting a Media

What to consider when choosing a media:

Fuel type: Each fuel type has distinct properties that influence its filtration requirements.

Water contamination: Water is the largest threat to your fuel supply. We recommend using water-detecting medias in almost every situation. See pages 8-9 for more information.

Performance: Some of our medias provide more protection than others. Look for the Ultimate Defense label (or the shield) to ensure you are getting maximum performance from your filter. See page 14 for more information.

Use these factors and the chart below to select the media that's right for your application:

	Remove Particulate & Detect Water	Remove Particulate
Straight Gasoline	<div style="display: flex; justify-content: space-around; align-items: center;"> <div style="background-color: #003366; color: white; padding: 2px 5px; border-radius: 3px;">HYDROSORB</div> <div style="display: flex; align-items: center;"> <div style="background-color: #003366; color: white; padding: 2px 5px; border-radius: 3px;">HYDROGLASS</div> </div> </div> <div style="display: flex; justify-content: space-around; align-items: center; margin-top: 5px;"> <div style="display: flex; align-items: center;"> <div style="background-color: #006633; color: white; padding: 2px 5px; border-radius: 3px;">MULTI-FUEL</div> </div> </div>	<div style="display: flex; justify-content: space-around; align-items: center;"> <div style="background-color: #cc0000; color: white; padding: 2px 5px; border-radius: 3px;">CELLULOSE</div> <div style="display: flex; align-items: center;"> <div style="background-color: #cc0000; color: white; padding: 2px 5px; border-radius: 3px;">MICROGLASS</div> </div> </div>
Ethanol Blends up to 25%	<div style="display: flex; justify-content: space-around; align-items: center;"> <div style="display: flex; align-items: center;"> <div style="background-color: #006633; color: white; padding: 2px 5px; border-radius: 3px;">MULTI-FUEL</div> </div> </div>	<div style="display: flex; justify-content: space-around; align-items: center;"> <div style="background-color: #cc0000; color: white; padding: 2px 5px; border-radius: 3px;">CELLULOSE</div> <div style="display: flex; align-items: center;"> <div style="background-color: #cc0000; color: white; padding: 2px 5px; border-radius: 3px;">MICROGLASS</div> </div> </div>
Ethanol Blends up to 85%		<div style="display: flex; justify-content: space-around; align-items: center;"> <div style="display: flex; align-items: center;"> <div style="background-color: #cc0000; color: white; padding: 2px 5px; border-radius: 3px;">MICROGLASS</div> </div> <p style="font-size: 0.8em; margin-top: 2px;">WITH "HA" IN MODEL #</p> </div>
Diesel/ULSD	<div style="display: flex; justify-content: space-around; align-items: center;"> <div style="background-color: #003366; color: white; padding: 2px 5px; border-radius: 3px;">HYDROSORB</div> <div style="display: flex; align-items: center;"> <div style="background-color: #003366; color: white; padding: 2px 5px; border-radius: 3px;">HYDROGLASS</div> </div> </div>	<div style="display: flex; justify-content: space-around; align-items: center;"> <div style="background-color: #cc0000; color: white; padding: 2px 5px; border-radius: 3px;">CELLULOSE</div> <div style="display: flex; align-items: center;"> <div style="background-color: #cc0000; color: white; padding: 2px 5px; border-radius: 3px;">MICROGLASS</div> </div> </div>
Biodiesel Blends up to 100%	<div style="display: flex; justify-content: space-around; align-items: center;"> <div style="display: flex; align-items: center;"> <div style="background-color: #003366; color: white; padding: 2px 5px; border-radius: 3px;">HYDROGLASS</div> </div> </div>	<div style="display: flex; justify-content: space-around; align-items: center;"> <div style="display: flex; align-items: center;"> <div style="background-color: #cc0000; color: white; padding: 2px 5px; border-radius: 3px;">MICROGLASS</div> </div> </div>



Selecting a Series

Flow rate, maximum pressure conditions, and thread size (on existing installations) all influence the filter series you choose. Once you've determined these factors, use the chart below to select a series:

Series/Model	Max Flow*	Max PSI
200, 250, 260, 300, 400, 450, 475	25 GPM (94.6 LPM)	50 (3.4 BAR)
800, 800SL	40 GPM (151.4 LPM) 80 GPM (302.8 LPM) if using Dual Head Adaptor	50 (3.4 BAR)
Centurions	Depending on Adaptor: 30 GPM (113.6 LPM), 60 GPM (227.1 LPM), or 90 GPM (340.7 LPM)	50 (3.4 BAR)
Vikings	Depending on Model: 120 (454.2 LPM), 150 GPM (567.8 LPM), 300 GPM (1135.6 LPM), or 500 GPM (1892.7 LPM)	150 (10.3 BAR)

*These rates assume good conditions and moderate temperatures.

Remember that the filter isn't the only thing that affects flow...

Using a 35 GPM pump and an 800 series filter does not guarantee you will get 35 GPM out of the nozzle at all times. Other variables that can restrict flow include:

- Excessive or undersized plumbing
- Low temperatures (cold temperatures can lead to reduced flow in some fuels due to changes in viscosity)
- Filter nearing the end of its useful life, meaning that it is clogged with contamination (water, particulate, etc.)

If you anticipate low temperatures and/or a flow rate at or near the maximum rate for a given filter series, we recommend moving up to the next series.

PROTECTING FUEL FROM WATER

Water continues to reign as the largest threat to your fuel supply. It can find its way into your fuel during delivery; from rain, humidity, or condensation; via leaks; and a number of other ways. Water causes significant problems in fuel no matter what type of fuel you're using. That's why we recommend using water-detecting filters in almost every situation.

How our water-detecting filters work:

1. Fuel containing water and particulate enters the filter.
2. Water detection material swells and causes reduced flow.
3. Slow flow notifies the operator that water is present and action is required.

Detecting Excess Water in Fuel

The restricted flow that occurs when excess water passes through our water-detecting medias is the most obvious and immediate indication of water contamination, but it's not the only indication. Signs of water contamination can also manifest in these ways:

- Shorter than typical service intervals for the filter
- Rapid decrease in system flow rate
- Rapid increase in differential pressure

Particulate contamination can also create these conditions. If any of these conditions occur or persist, this may indicate a potentially larger scale issue. Be sure to monitor changes that occur in your fueling system and act when concerned about the presence of water or other contaminants.

When Using:

70094 (260-10)

70095 (260-30)

70010 (300-10)

70012 (300-30)

70015 (400-10)

70016 (400-30)

70034 (450-10)

70027 (450-30)

70097 (475-10)

70092 (475-30)

70019 (800-10)

70020 (800-30)

Follow this simple guide to find your best defense against water:

For Straight Gasoline		For Ethanol Blends up to 25%		For Diesel or ULSD		For Biodiesel*
Better Defense	Best Defense	Better Defense	Best Defense	Better Defense	Best Defense	Best Defense
70062 (260HS-10)	70232 (260HG-02) 70236 (260HG-10) 70117 (260MB-10)	-	70117 (260MB-10)	70062 (260HS-10)	70232 (260HG-02) 70236 (260HG-10)	70232 (260HG-02) 70236 (260HG-10)
70062 (260HS-10) 70067 (260HS-30)	70232 (260HG-02) 70236 (260HG-10) 70117 (260MB-10)	-	70117 (260MB-10)	70062 (260HS-10) 70067 (260HS-30)	70232 (260HG-02) 70236 (260HG-10)	70232 (260HG-02) 70236 (260HG-10)
70059 (300HS-10)	70235 (300HG-10) 70122 (300MB-10)	-	70122 (300MB-10)	70059 (300HS-10)	70235 (300HG-10)	70235 (300HG-10)
70059 (300HS-10) 70064 (300HS-30)	70235 (300HG-10) 70122 (300MB-10) 70018 (300MB-30)	70018 (300MB-30)	70122 (300MB-10)	70059 (300HS-10) 70064 (300HS-30)	70235 (300HG-10)	70235 (300HG-10)
70060 (400HS-10)	70008 (400HG-10) 70120 (400MB-10)	-	70120 (400MB-10)	70060 (400HS-10)	70008 (400HG-10)	70008 (400HG-10)
70060 (400HS-10) 70065 (400HS-30)	70008 (400HG-10) 70120 (400MB-10) 70106 (400MB-30)	70106 (400MB-30)	70120 (400MB-10)	70060 (400HS-10) 70065 (400HS-30)	70008 (400HG-10)	70008 (400HG-10)
-	70075 (450HS-10) 70023 (450MB-10)	-	70023 (450MB-10)	-	70075 (450HS-10)	-
70076 (450HS-30)	70075 (450HS-10) 70023 (450MB-10)	-	70023 (450MB-10)	70076 (450HS-30)	70075 (450HS-10)	-
-	70098 (475HS-10) 70111 (475MB-10)	-	70111 (475MB-10)	-	70098 (475HS-10)	-
70043 (475HS-30)	70098 (475HS-10) 70111 (475MB-10)	-	70111 (475MB-10)	70043 (475HS-30)	70098 (475HS-10)	-
70063 (800HS-30)	70037 (800HG-02) 70024 (800HG-10)	-	-	70063 (800HS-30)	70037 (800HG-02) 70024 (800HG-10)	70037 (800HG-02) 70024 (800HG-10)
70063 (800HS-10) 70068 (800HS-30)	70037 (800HG-02) 70024 (800HG-10)	-	-	70063 (800HS-10) 70068 (800HS-30)	70037 (800HG-02) 70024 (800HG-10)	70037 (800HG-02) 70024 (800HG-10)

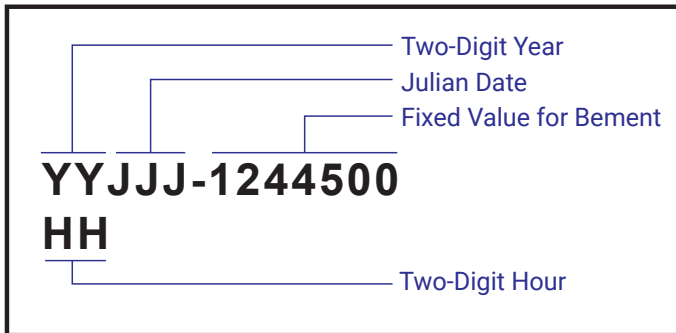
WATER CONTAMINATION

*Includes biodiesel blends up to 20% and 100% biodiesel. We only show best defense options because the distinct properties of biodiesel require the specific filters listed. Please contact us with questions or to learn more.

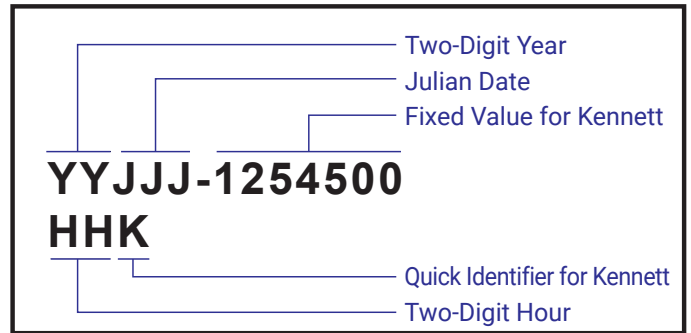
PRODUCT TRACEABILITY

Cim-Tek Filters are traceable to the manufacturing plant and production date.

Bement Date Code



Kennett Date Code



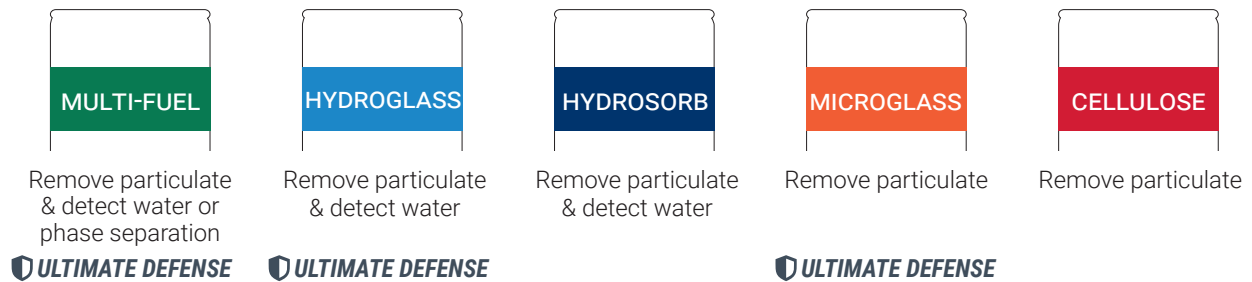
Starting September 18, 2023, Cim-Tek Filters have new production date codes identifying when and where a filter was made. Filters are manufactured in either Bement, Illinois or Kennett, Missouri. Date codes can be found on the bottom of the filter can or dome.



READING OUR LABEL

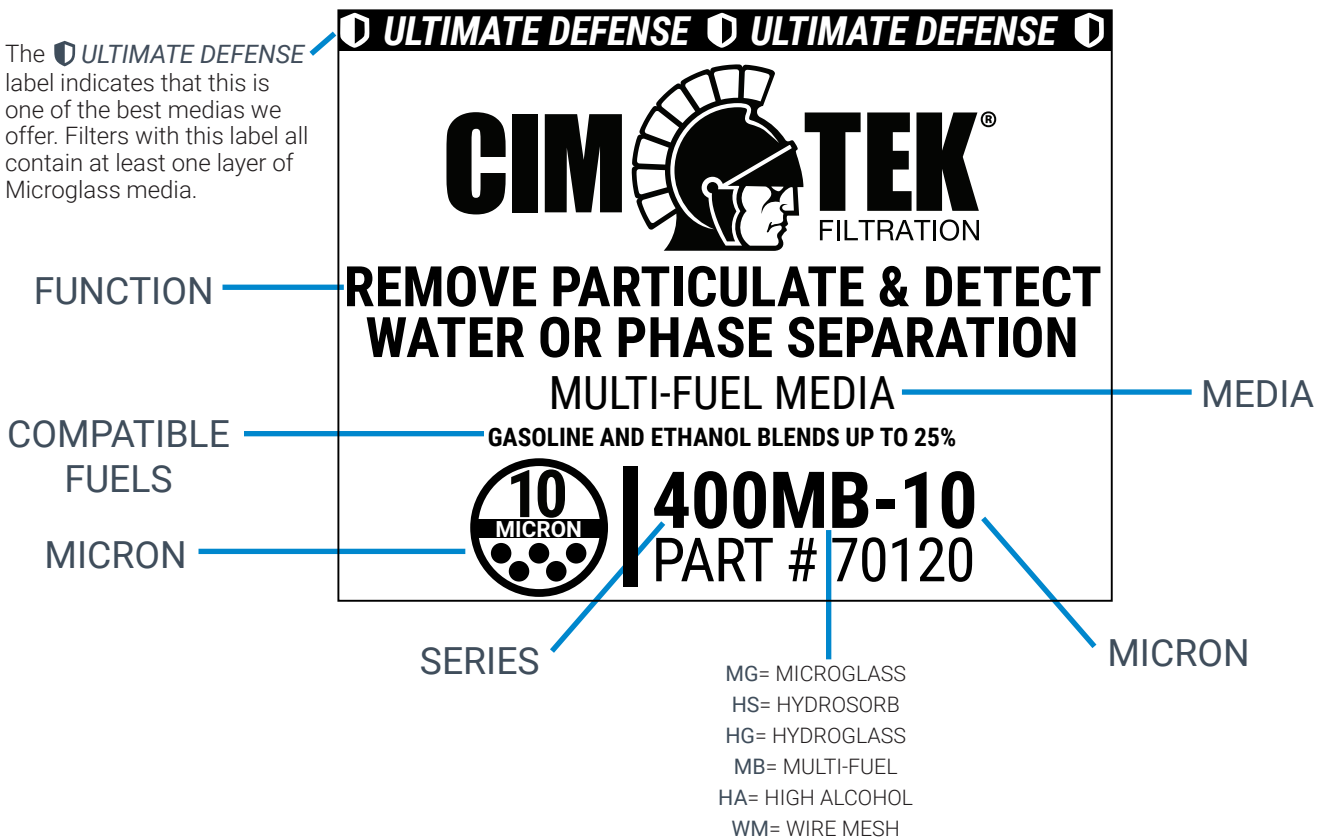
Our labels help you quickly identify everything you need to know about our filters. Use the guide below to understand every element of the filter label.

The color tells you what the filter does



The label gives you all the details

The **ULTIMATE DEFENSE** label indicates that this is one of the best medias we offer. Filters with this label all contain at least one layer of Microglass media.



READING OUR LABEL

SPIN ON FILTERS

250Series



Thread:
1³/₈"-12 [or] 1"-12

Max Flow:
25 GPM (94.6 LPM)

Micron Options:



Media Options:

CELLULOSE

260Series



Thread:
1³/₈"-12 [or] 1"-12

Max Flow:
25 GPM (94.6 LPM)

Micron Options:



Media Options:

- MULTI-FUEL**
- HYDROGLASS**
- HYDROSORB**
- MICROGLASS**
- CELLULOSE**

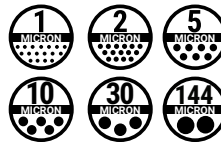
300Series



Thread: 1"-12

Max Flow:
25 GPM (94.6 LPM)

Micron Options:



Media Options:

- MULTI-FUEL**
- HYDROGLASS**
- HYDROSORB**
- MICROGLASS**
- CELLULOSE**

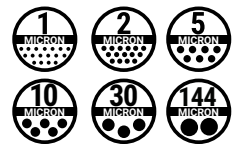
400Series



Thread: 1¹/₂"-16

Max Flow:
25 GPM (94.6 LPM)

Micron Options:



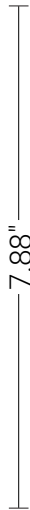
Media Options:

- MULTI-FUEL**
- HYDROGLASS**
- HYDROSORB**
- MICROGLASS**
- CELLULOSE**

OPTIONS FOR GASOLINE, ETHANOL BLENDS, DIESEL, ULSD, AND BIODIESEL*
 1, 2, 5, 10, 30, AND 144 MICRON OPTIONS
 50 PSI (3.4 BAR) MAX WORKING PRESSURE

*SEE PAGES 4-9 FOR DETAILS ON FUEL COMPATIBILITY

450Series



3.75"

Thread: 1 1/2"-16

Max Flow:
25 GPM (94.6 LPM)

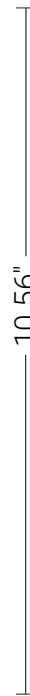
Micron Options:



Media Options:

- MULTI-FUEL
- HYDROSORB
- MICROGLASS
- CELLULOSE

475Series



3.75"

Thread: 1 1/2"-16

Max Flow:
25 GPM (94.6 LPM)

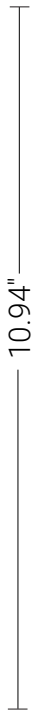
Micron Options:



Media Options:

- MULTI-FUEL
- HYDROSORB
- CELLULOSE

800Series



5.06"

Thread: 1 1/2"-16

Max Flow:
40 GPM (151.4 LPM)

Micron Options:



Media Options:

- HYDROGLASS
- HYDROSORB
- MICROGLASS
- CELLULOSE

SPIN ON FILTERS

NOT FOR USE WITH AVIATION APPLICATIONS

www.cim-tek.com | 844.447.7663 13

ULTIMATE DEFENSE

THE PROTECTION YOUR FUEL & EQUIPMENT NEED

We all know that today's equipment and engines are more advanced (and more expensive) than ever before. What you may not realize is that they also require cleaner fuel than ever before. Additionally, the use of additives and fuel blends (biodiesel, ULSD, etc.) further increase the need for advanced protection. Basic filtration just doesn't cut it—your fuel and equipment need more.

That's why we always recommend using an Ultimate Defense media whenever possible. Our Ultimate Defense medias all contain at least one layer of Microglass, which consists of synthetic fibers that are smaller in size and more uniform in diameter than the natural fibers of Cellulose. This generally means increased retention, lower clean filter differential pressure, and less resistance to fluid flow. In other words, these filters are better equipped to provide the advanced protection that today's fuels and equipment require.

250Series



MADE IN USA

Thread: 1"-12 | Width: 3.75" | Length: 7.13" | Max Flow: 25 GPM (94.6 LPM)

Remove Particulate



250-02
Part # 70819

CELLULOSE



250-10
Part # 70003

CELLULOSE



250-30
Part # 70088

CELLULOSE



250A Series



MADE IN USA

Thread: 1³/₈"-12 | Width: 3.75" | Length: 7.13" | Max Flow: 25 GPM (94.6 LPM)

Remove Particulate



250A-02
Part # 70821

CELLULOSE



250A-10
Part # 70005

CELLULOSE



250A-30
Part # 70089

CELLULOSE



250-250A SERIES

Quickly identify which filter colors are compatible with each fuel type:

STRAIGHT GASOLINE



UP TO 25% ETHANOL



25-85% ETHANOL



DIESEL/ULSD



BIODIESEL UP TO 100%



Not for use with aviation applications

SEE PAGES 4-9 FOR MORE DETAILS ON FUEL COMPATIBILITY // SEE PAGE 24 FOR ADAPTORS

260Series



MADE IN USA

Thread: 1"-12 | Width: 3.75" | Length: 8.75" | Max Flow: 25 GPM (94.6 LPM)

Remove Particulate



260MG-02
Part # 70230
MICROGLASS



260MG-10
Part # 70234
MICROGLASS



260-10
Part # 70094
CELLULOSE



260-30
Part # 70095
CELLULOSE



Detect Water & Remove Particulate



260HG-02
Part # 70232
HYDROGLASS



260HG-10
Part # 70236
HYDROGLASS



260HS-10
Part # 70062
HYDROSORB



260HS-30
Part # 70067
HYDROSORB



Detect Water or Phase Separation & Remove Particulate



260MB-10
Part # 70117
MULTI-FUEL



Quickly identify which filter colors are compatible with each fuel type:

STRAIGHT GASOLINE



UP TO 25% ETHANOL



25-85% ETHANOL



DIESEL/ULSD



BIODIESEL UP TO 100%



Not for use with aviation applications

SEE PAGES 4-9 FOR MORE DETAILS ON FUEL COMPATIBILITY // SEE PAGE 24 FOR ADAPTORS

260A Series



MADE IN USA

Thread: 1³/₈"-12 | Width: 3.75" | Length: 8.75" | Max Flow: 25 GPM (94.6 LPM)

Remove Particulate



260AMG-02

Part # 70221

MICROGLASS



260AMG-10

Part # 70225

MICROGLASS



Detect Water & Remove Particulate



260AHG-02

Part # 70223

HYDROGLASS



260AHG-10

Part # 70227

HYDROGLASS



260AHS-10

Part # 70061

HYDROSORB



260AHS-30

Part # 70066

HYDROSORB



260-260A SERIES

Quickly identify which filter colors are compatible with each fuel type:

STRAIGHT GASOLINE



UP TO 25% ETHANOL



25-85% ETHANOL



DIESEL/ULSD



BIODIESEL UP TO 100%



Not for use with aviation applications

SEE PAGES 4-9 FOR MORE DETAILS ON FUEL COMPATIBILITY // SEE PAGE 24 FOR ADAPTORS

300Series



MADE IN USA

Thread: 1"-12 | Width: 3.75" | Length: 5.38" | Max Flow: 25 GPM (94.6 LPM)

Remove Particulate

 300MG-02 Part # 70057 MICROGLASS 	 300MG-10 Part # 70058 MICROGLASS 	 300HA-01 Part # 70025 MICROGLASS 	 300HA-05 Part # 70993 MICROGLASS
 300-02 Part # 70806 CELLULOSE 	 300-10 Part # 70010 CELLULOSE 	 300-30 Part # 70012 CELLULOSE 	 300WM-144 Part # 70077 WIRE MESH

Detect Water & Remove Particulate

 300HG-10 Part # 70235 HYDROGLASS 	 300HS-10 Part # 70059 HYDROSORB 	 300HS-30 Part # 70064 HYDROSORB
--	---	---

Detect Water or Phase Separation & Remove Particulate

 300MB-10 Part # 70122 MULTI-FUEL 	 300MB-30 Part # 70018 MULTI-FUEL
--	--

Quickly identify which filter colors are compatible with each fuel type:

STRAIGHT GASOLINE
 UP TO 25% ETHANOL
 25-85% ETHANOL
 DIESEL/ULSD
 BIODIESEL UP TO 100%

"HA" IN MODEL NAME

Not for use with aviation applications

SEE PAGES 4-9 FOR MORE DETAILS ON FUEL COMPATIBILITY // SEE PAGE 24 FOR ADAPTORS

400Series



MADE IN USA

Thread: 1½"-16 | Width: 3.75" | Length: 5.31" | Max Flow: 25 GPM (94.6 LPM)

Remove Particulate

 400MG-02 Part # 70105 MICROGLASS 	 400MG-10 Part # 70104 MICROGLASS 	 400HA-01 Part # 70039 MICROGLASS 	 400HA-05 Part # 70991 MICROGLASS
 400HA-10 Part # 70898 MICROGLASS 	 400HA-20 Part # 70580 MICROGLASS 	 400-02 Part # 70808 CELLULOSE 	 400-10 Part # 70015 CELLULOSE
 400-30 Part # 70016 CELLULOSE 	 400WM-144 Part # 70081 WIRE MESH 		

Detect Water & Remove Particulate

 400HG-10 Part # 70008 HYDROGLASS 	 400HS-10 Part # 70060 HYDROSORB 	 400HS-30 Part # 70065 HYDROSORB
--	---	---

Detect Water or Phase Separation & Remove Particulate

 400MB-10 Part # 70120 MULTI-FUEL 	 400MB-30 Part # 70106 MULTI-FUEL
--	--

Quickly identify which filter colors are compatible with each fuel type:

STRAIGHT GASOLINE
 UP TO 25% ETHANOL
 25-85% ETHANOL *HA* IN MODEL NAME
 DIESEL/ULSD
 BIODIESEL UP TO 100%

Not for use with aviation applications

SEE PAGES 4-9 FOR MORE DETAILS ON FUEL COMPATIBILITY // SEE PAGE 24 FOR ADAPTORS

300-400 SERIES

450Series



MADE IN USA

Thread: 1 1/2"-16 | Width: 3.75" | Length: 7.88" | Max Flow: 25 GPM (94.6 LPM)

Remove Particulate



450MG-10

Part # 70032

MICROGLASS



450-10

Part # 70034

CELLULOSE



450-30

Part # 70027

CELLULOSE



Detect Water & Remove Particulate



450HS-10

Part # 70075

HYDROSORB



450HS-30

Part # 70076

HYDROSORB



Detect Water or Phase Separation & Remove Particulate



450MB-10

Part # 70023

MULTI-FUEL



Quickly identify which filter colors are compatible with each fuel type:

STRAIGHT GASOLINE



UP TO 25% ETHANOL



25-85% ETHANOL



DIESEL/ULSD



BIODIESEL UP TO 100%



Not for use with aviation applications

SEE PAGES 4-9 FOR MORE DETAILS ON FUEL COMPATIBILITY // SEE PAGE 24 FOR ADAPTORS

475Series



MADE IN USA

Thread: 1 1/2"-16 | Width: 3.75" | Length: 10.56" | Max Flow: 25 GPM (94.6 LPM)

Remove Particulate



475-10
Part # 70097
CELLULOSE



475-30
Part # 70092
CELLULOSE



Detect Water & Remove Particulate



475HS-10
Part # 70098
HYDROSORB



475HS-30
Part # 70043
HYDROSORB



Detect Water or Phase Separation & Remove Particulate



475MB-10
Part # 70111
MULTI-FUEL



450-475 SERIES

Quickly identify which filter colors are compatible with each fuel type:

STRAIGHT GASOLINE	UP TO 25% ETHANOL	25-85% ETHANOL	DIESEL/ULSD	BIODIESEL UP TO 100%
		HA IN MODEL NAME		

Not for use with aviation applications

SEE PAGES 4-9 FOR MORE DETAILS ON FUEL COMPATIBILITY // SEE PAGE 24 FOR ADAPTORS

800Series



MADE IN USA

Thread: 1 1/2"-16 | Width: 5.06" | Length: 10.94" | Max Flow: 40 GPM (151.4 LPM)

Remove Particulate

	<p>800MG-02 Part # 70036 MICROGLASS</p>		<p>800MG-10 Part # 70028 MICROGLASS</p>		<p>800MG-30 Part # 70074 MICROGLASS</p>		<p>800-02 Part # 70814 CELLULOSE</p>
	<p>800-10 Part # 70019 CELLULOSE</p>		<p>800-30 Part # 70020 CELLULOSE</p>		<p>800WM-144 Part # 70080 WIRE MESH</p>		

Detect Water & Remove Particulate

	<p>800HG-02 Part # 70037 HYDROGLASS</p>		<p>800HG-10 Part# 70024 HYDROGLASS</p>		<p>800HS-10 Part # 70063 HYDROSORB</p>		<p>800HS-30 Part # 70068 HYDROSORB</p>

Quickly identify which filter colors are compatible with each fuel type:

STRAIGHT GASOLINE	UP TO 25% ETHANOL	25-85% ETHANOL	DIESEL/ULSD	BIODIESEL UP TO 100%
		HA IN MODEL NAME		

Not for use with aviation applications

SEE PAGES 4-9 FOR MORE DETAILS ON FUEL COMPATIBILITY // SEE PAGE 24 FOR ADAPTORS

800SL Series



MADE IN USA

Thread: 1 1/2"-16 | Width: 5.06" | Length: 6.94" | Max Flow: 40 GPM (151.4 LPM)

Remove Particulate



800SL-30

Part # 70053

CELLULOSE



800-800SL SERIES

Quickly identify which filter colors are compatible with each fuel type:

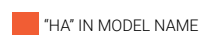
STRAIGHT GASOLINE



UP TO 25% ETHANOL



25-85% ETHANOL



DIESEL/ULSD



BIODIESEL UP TO 100%



Not for use with aviation applications

SEE PAGES 4-9 FOR MORE DETAILS ON FUEL COMPATIBILITY // SEE PAGE 24 FOR ADAPTORS

MOUNTING ADAPTORS

1"-12 Thread

For 200, 250, 260, & 300 Series

Cast Iron



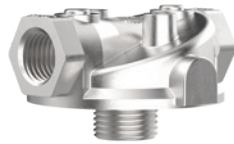
3/4" NPT Inlet/Outlet Ports

Part # 50003



1" NPT Inlet/Outlet Ports

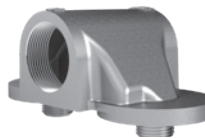
Part # 50002



1/2" NPT Inlet/Outlet Ports

Part # 50244

1/8" NPT Gauge Ports



1 1/2" NPT Inlet/Outlet Ports

Part # 50006

Dual Adaptor

Aluminum



3/4" NPT Inlet/Outlet Ports

Part # 50181

Part # 50183

3 PSI Bypass

Part # 50185

25 PSI Bypass



3/4" NPT Inlet/Outlet Ports

Part # 50182

1/8" NPT Gauge Ports

Part # 50186

1/8" NPT Gauge Ports

25 PSI Bypass

For 300HA Series

Nickel-Plated Cast Iron



3/4" NPT Inlet/Outlet Ports

Part # 50017N



1" NPT Inlet/Outlet Ports

Part # 50016N

1 3/8"-12 Thread

For 200A, 250A, & 260A Series



Cast Iron

1" NPT Inlet/Outlet Ports

Part # 50004

1 1/2"-16 Thread

For 400, 450, & 475 Series



Aluminum
1" NPT Inlet/Outlet Ports
Made in India
Part # 50032



Nickel-Plated Aluminum
1" NPT Inlet/Outlet Ports
Made in India
Part # 50032N

For 800 Series

Aluminum



1" NPT Inlet/Outlet Ports
Part # 50109
Part # 50115
25 PSI Bypass



1" NPT Inlet/Outlet Ports
Part # 50026
1/8" NPT Gauge Ports
Part # 50116
1/8" NPT Gauge Ports
25 PSI Bypass



1 1/4" NPT Inlet/Outlet Ports
Part # 50136



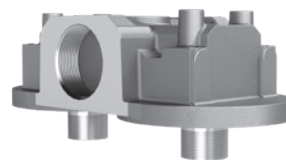
1 1/4" NPT Inlet/Outlet Ports
Part # 50137
1/8" NPT Gauge Ports
Part # 50143
1/8" NPT Gauge Ports
25 PSI Bypass



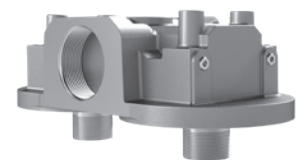
1 1/2" NPT Inlet/Outlet Ports
Part # 50163



1 1/2" NPT Inlet/Outlet Ports
Part # 50027
1/8" NPT Gauge Ports
Part # 50170
1/8" NPT Gauge Ports
25 PSI Bypass



2" NPT Inlet/Outlet Ports
Part # 50011
Dual Adaptor



2" NPT Inlet/Outlet Ports
Part # 50028
Dual Adaptor with 1/8" NPT
Gauge Ports

ADAPTORS

CENTURIONS

Options for Gasoline, Ethanol Blends up to 85%, Diesel, ULSD, and Biodiesel Blends up to 100%*

Micron Options:



MADE IN USA

*SEE PAGES 4-9 FOR DETAILS ON FUEL COMPATIBILITY

NOT FOR USE WITH AVIATION APPLICATIONS



Centurion Single

PART # 40001

MAX FLOW:
30 GPM (113.6 LPM)

MAX WORKING PRESSURE:
50 PSI (3.4 BAR)

1" NPT IN/OUT

USES 1 ELEMENT

Centurion Double

PART # 40013

MAX FLOW:
60 GPM (227.1 LPM)

MAX WORKING PRESSURE:
50 PSI (3.4 BAR)

1½" NPT IN/OUT

USES 2 ELEMENTS

Centurion Triple

PART # 40020

MAX FLOW:
90 GPM (340.7 LPM)

MAX WORKING PRESSURE:
50 PSI (3.4 BAR)

2" NPT IN/OUT

USES 3 ELEMENTS

Elements

E02

PART # 30065

CELLULOSE



E10

PART # 30002

CELLULOSE



E30

PART # 30004

CELLULOSE



E-10M

PART # 30195

MICROGLASS



EHS-10

PART # 30033

HYDROSORB



EHS-30

PART # 30036

HYDROSORB



DIESEL EXHAUST FLUID DISPENSER FILTER

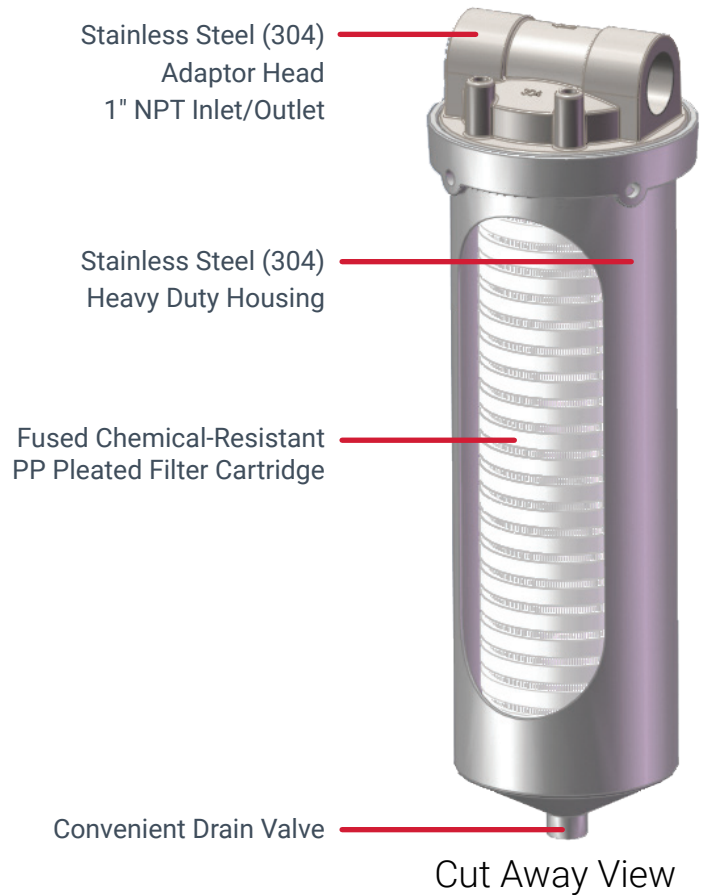
Cim-Tek® Filtration understands that diesel exhaust fluid (DEF) is a key ingredient for allowing the selective catalytic reduction (SCR) system to reduce emission pollutants such as NOx (nitrogen oxides). In response to truck regulations for SCR systems, we have developed D.E.F.-TEK® filters for particulate and crystal removal from DEF fluid at the dispenser to ensure SCR systems function properly.

- Filter removes particulates & crystalized urea from DEF fluid (Available in 1 and 5 micron filtration)
- Ultra-clean DEF fluid is critical in making the SCR system and dosing valve function properly
- Filter housings manufactured of heavy duty 304 stainless steel
- 150 PSI (10.3 BAR) operating pressure
- All materials compatible with DEF



**DIESEL EXHAUST FLUID
DISPENSER FILTER HOUSING
PART # 41060**

SPECIALLY DESIGNED STAINLESS STEEL FILTER HOUSING WITH EPDM GASKETS
150 PSI (10.3 BAR) MAX WORKING PRESSURE
1" NPT INLET/OUTLET
4 1/4" WIDE
13 1/4" LENGTH FROM TOP TO BOTTOM
1 PER CARTON
FILTER CARTRIDGE NOT INCLUDED



**DIESEL EXHAUST FLUID
DISPENSER FILTER CARTRIDGE**

PART # 31011 - 1 MICRON
PART # 31015 - 5 MICRON
FUSED CHEMICAL-RESISTANT PP PLEATED FILTER CARTRIDGE, EPDM GASKETS
4 PER CARTON

MADE IN CHINA
NOT FOR USE WITH AVIATION APPLICATIONS
HOUSING AND CARTRIDGES NOT FOR USE WITH PETROLEUM PRODUCTS (GASOLINE, DIESEL, ETC.)

VIKINGS

- Made of carbon steel
- Epoxy coating inside and out
- Powder coated for weatherability
- Swing lid for easy access
- Gauge ports for improved monitoring

Elements

E-1300-02 PART # 30066	E-1300-10 PART # 30008	E-1300-30 PART # 30009
CELLULOSE	CELLULOSE	CELLULOSE



E-1300MG-03 PART # 30204	E-1300MG-05 PART # 30203	E-1300MG-10 PART # 30202	E-1300MG-30 PART # 30201
MICROGLASS	MICROGLASS	MICROGLASS	MICROGLASS



E-1300HS-10 PART # 30034	E-1300HS-30 PART # 30037
HYDROSORB	HYDROSORB



Differential Pressure Gauges

PART # 90601 FOR VIKING 1, 1F, 2, 2F, 3F	PART # 90602 FOR VIKING 4F	PART # 90603 FOR VIKING 1, 1F, 2, 2F, 3F, 4F *2 GAUGES
---	--------------------------------------	--



VIKING 1
PART # 40186

Max Flow Rate:
120 GPM (454.2 LPM)

Max Working Pressure:
150 PSI (10.3 BAR)

2" NPT In/Out
uses 1 filter element

11.63" width from
Inlet to Outlet*

31.56" length from
top to bottom*



VIKING 1F
PART # 40187

Max Flow Rate:
120 GPM (454.2 LPM)

Max Working Pressure:
150 PSI (10.3 BAR)

Flanged In/Out
2" RFSO Flange
uses 1 filter element

13.5" width from
Flange to Flange*

31.56" length from
top to bottom*

NOT FOR USE WITH AVIATION APPLICATIONS



MADE IN USA



VIKING 2

PART # 40188

Max Flow Rate:
150 GPM (567.8 LPM)

Max Working Pressure:
150 PSI (10.3 BAR)

2" NPT In/Out

uses 2 filter elements

11.63" width from
Inlet to Outlet*

49.69" length from
top to bottom*

VIKING 2F

PART # 40189

Max Flow Rate:
150 GPM (567.8 LPM)

Max Working Pressure:
150 PSI (10.3 BAR)

Flanged In/Out

2" RFSO Flange

uses 2 filter elements

13.5" width from
Flange to Flange*

49.69" length from
top to bottom*

VIKING 3F

PART # 40190

Max Flow Rate:
300 GPM (1,135.6 LPM)

Max Working Pressure:
150 PSI (10.3 BAR)

Flanged In/Out

3" RFSO Flange

uses 4 filter elements

24" width from
Flange to Flange*

56.25" length from
top to bottom*

VIKING 4F

PART # 40191

Max Flow Rate:
500 GPM (1,892.7 LPM)

Max Working Pressure:
150 PSI (10.3 BAR)

Flanged In/Out

4" RFSO Flange

uses 8 filter elements

28" width from
Flange to Flange*

78.5" length from
top to bottom*

VIKINGS

*SEE PAGES 4-9 FOR DETAILS ON FUEL COMPATIBILITY

VIKING

BAG FILTER HOUSINGS

- Capable of filtering gasoline, ethanol blends up to E85, biodiesel blends up to B100, diesel fuel, ultra-low sulfur diesel, and fuel oils.
- Industrial fluids such as lubrication oils, hydraulic oils, synthetic oils, transformer oils, many solvents, and thinners may be filtered.
- Ideal for suction applications

Benefits

- Removes common contaminants such as dirt, dust, and rust
- Increased filtering capacity
- Mesh bag options can be reused
- Low cost replacements

Design Features

- 40 GPM (151.4 LPM) up to 120 GPM (454.2 LPM) Maximum Flow
- 150 PSI (10.3 BAR) Rating
- 3 Bolt Swing Down Lid
- Carbon Steel Housing
- 1/4" port for the optional pressure gauge kit
- All bag filters require 1 bag

Bag Filters

Polyester Media	Viking Housing	Bag Part Number
5 Micron Polyester Media	B1	90591
	B2	90575
	B3	90583
10 Micron Polyester Media	B1	90592
	B2	90576
	B3	90584
25 Micron Polyester Media	B1	90593
	B2	90577
	B3	90585

Nylon Mesh Media	Viking Housing	Bag Part Number
75 Micron Nylon Mesh Media	B1	90594
	B2	90578
	B3	90586
150 Micron Nylon Mesh Media	B1	90595
	B2	90579
	B3	90587
300 Micron Nylon Mesh Media	B1	90596
	B2	90580
	B3	90588

NOT FOR USE WITH AVIATION APPLICATIONS



VIKING B1 HOUSING

PART # 40192

Max Flow Rate:
40 GPM (151.4 LPM)

1.5" NPT

6³/₄" Inlet to Outlet Dimensions
24¹/₂" length from top to bottom
Bag and Stand Not Included



VIKING B2 HOUSING

PART # 40193

Max Flow Rate:
80 GPM (302.8 LPM)

2" NPT

11³/₈" Inlet to Outlet Dimensions
32³/₈" length from top to bottom
Bag Not Included



VIKING B3 HOUSING

PART # 40194

Max Flow Rate:
120 GPM (454.2 LPM)

2" NPT

11³/₈" Inlet to Outlet Dimensions
44¹/₂" length from top to bottom
Bag Not Included

B1 BAG STAND

PART # 90565

FUEL CLEANLINESS & MAINTENANCE

Tank Sampler Kit

Portable hand-operated vacuum suction pump designed to determine fuel conditions present in fuel storage tanks

For use in above and underground fuel storage tanks as well as fuel oil tanks

Allows up to 20' of suction hose

Equipped with 3 shatter-resistant sample containers

PART # 60035



Pre-Vent

Fill cap with a pressure and vacuum release

Reduces evaporation in fuel storage tanks

Helps maintain the quality of stored fuel

2" NPT

PART # 60001
CAST IRON BASE



PART # 60002
CAST IRON BASE
WITH ANTI-THEFT
SECURITY ARM



PART # 60003
REPLACEMENT CAP



Diesel Nozzle Shield

- Covers approx. 4.5" of nozzle for maximum protection
- Tethered for convenience and retention to nozzle
- Ribbed on the inside for optimal fit and simple removal
- Easy to clean and maintain
- Durable to withstand the seasons
- Fits diesel nozzle sizes 7/8" through 1 3/16" O.D.

⚠ WARNING: This product can expose you to chemicals including Diisononyl Phthalate, which is known to the State of California to cause cancer. For more information, go to www.P65Warnings.ca.gov.

PART # 60074



Filter Cup

- Grips the filter and catches fuel
- Allows for faster change-outs and less dispenser downtime
- Helps prevent fuel spills
- Compatible with all brands and styles of dispenser fuel filters

⚠ WARNING: This product can expose you to chemicals including Diisononyl Phthalate, which is known to the State of California to cause cancer. For more information, go to www.P65Warnings.ca.gov.

PART # 60070
FOR 4" DIAMETER FILTERS

PART # 60072
FOR 5" DIAMETER FILTERS



REPLACEMENT PARTS

CENTURION PARTS

90001	Centurion Series Brass Washer
90002	Centurion 1, 3, 4 Canister
90003	Centurion Series Acorn Nut
90004	Centurion 1 Replacement Head
90005	Centurion Small Gasket Buna-N
90006	Centurion Grommet Buna-N
90007	Centurion Large Buna-N Gasket
90011	Centurion Draincock
90014	Centurion 3 Replacement Head
90015	Centurion 4 Replacement Head
90094	Centurion Gasket & Washer Kit

DEF PARTS

90057	Lip Gasket/Radial Seal (For 41060 & 41070)
90058	Replacement Canister (For 41060 & 41070)
91002	DEF SS Housing Viton® Gasket (For 41010)
91008	Install Tool For DEF (For 41010)
91010	DEF SS Canister Only (For 41010)
91011	DEF Bagged Components (For 41060 & 41070)
91235	New DEF SS Retainer Ring Only (For 41060 & 41070)

SPIN ON GASKETS

90025	Prelubed Gasket for 260 and 300 Series
90026	Viton® Gasket for 260 and 300 Series
90036	400 Series Prelubed Gasket
90037	300 Series, High Alcohol Viton® Gasket
90039	Viton® 800 Series Gasket
90041	800 Prelube Gasket

TANK SAMPLER PARTS

90025	300G Prelube Gasket
90030	Replacement Case
90218	Plastic Coated Jar
90220	Jar Lid
90222	14' Replacement Hose
90223	Replacement Pump
90224	Orifice Weight Replacement

VIKING PARTS

90243	Viking 1 Closure .50FW Washer
90244	Clevis Bolt & Eye Nut Assembly for Viking
90354	Buna-N Lid Gasket General IV
90517	Titan 1 Buna Lid Gasket Replacement
90518	Titan 1 Viton® Lid Gasket Replacement
90560	Std. Viking I & II Main Seal Buna
90561	Std. Viking 3 & 4 Main Seal Buna-N (Serial#3528522 and Lower)
90562	Viking B2 & B3 Seal Main Viton®
90563	Viking B2 & B3 Interior Bucket Seal Viton®
90564	Viking B1 Main Seal Viton®
90569	Viking 1, 2, 3, 4 Element Hold Down
90570	Viking 1, 2, 3, 4 Element Knob
90571	Eye Nut, Viking I, II, B1, B2, B3
90572	Clevis Bolt Viking I, II, B1, B2, B3
90573	Viking 3 & 4 Closure 7/8" Eye Nut
90574	Viking 3 & 4 Closure 7/8" Eye Bolt
90598	Viking 3 & 4 Lid Lift Crank
90599	Opt. Viking 1 & 2 Main Seal Viton®
90600	Opt. Viking 3 & 4 Main Seal Viton® (Serial#3528522 and Lower)
90601	Viking 1, 2, 3 Differential Pressure Gauge Kit
90602	Viking 4 Differential Pressure Gauge Kit
90603	Pressure Gauge Kit for Viking 1-4, B1, B2, & B3
90604	Vacuum Gauge Kit - Viking Bag Housings
90626	Viking B1 Main Seal Buna-N
90627	Viking B2 & B3 Main Seal Buna-N
90633	Viking Differential Pressure Gauge Only
90703	Std. Viking 3 & 4 Main Seal Buna-N (Serial#3528523 and Higher or No Build Code)
90704	Opt. Viking 3 & 4 Main Seal Viton®
90706	40191 Hand Wheel - Stainless Steel
90707	40191 Hand Wheel
90708	Viking 1 Lid

VIKING BAGS

90565	Viking B1 Stand
90566	Viking B2 & B3 Stand
90567	Viking B3 Interior Support Basket
90568	Viking B1 Interior Bag Support Basket
90575	Viking B2 (5 Micron) Polyester
90576	Viking B2 (10 Micron) Polyester
90577	Viking B2 (25 Micron) Polyester
90578	Viking B2 (75 Micron) Nylon
90579	Viking B2 (150 Micron) Nylon
90580	Viking B2 (300 Micron) Nylon
90583	Viking B3 (5 Micron) Polyester
90584	Viking B3 (10 Micron) Polyester
90585	Viking B3 (25 Micron) Polyester
90586	Viking B3 (75 Micron) Nylon
90587	Viking B3 (150 Micron) Nylon
90588	Viking B3 (300 Micron) Nylon
90591	Viking B1 (5 Micron) Polyester
90592	Viking B1 (10 Micron) Polyester
90593	Viking B1 (25 Micron) Polyester
90594	Viking B1 (75 Micron) Nylon
90595	Viking B1 (150 Micron) Nylon
90596	Viking B1 (300 Micron) Nylon
90597	Viking B2 Interior Bag Basket

INDEX

PART#	MODEL#	PAGE	PART#	MODEL#	PAGE	PART#	MODEL#	PAGE
30002	E10 Centurion Element	27	50115	Aluminum Mounting Adaptor	25	70059	300HS-10 Filter	18
30004	E30 Centurion Element	27	50116	Aluminum Mounting Adaptor	25	70060	400HS-10 Filter	19
30008	E-1300-10 Viking Element	30	50136	Aluminum Mounting Adaptor	25	70061	260AHS-10 Filter	17
30009	E-1300-30 Viking Element	30	50137	Aluminum Mounting Adaptor	25	70062	260HS-10 Filter	16
30033	EHS-10 Centurion Element	27	50143	Aluminum Mounting Adaptor	25	70063	800HS-10 Filter	22
30034	E-1300HS-10 Viking Element	30	50163	Aluminum Mounting Adaptor	25	70064	300HS-30 Filter	18
30036	EHS-30 Centurion Element	27	50170	Aluminum Mounting Adaptor	25	70065	400HS-30 Filter	19
30037	E-1300HS-30 Viking Element	30	50181	Aluminum Mounting Adaptor	24	70066	260AHS-30 Filter	17
30065	E02 Centurion Element	27	50182	Aluminum Mounting Adaptor	24	70067	260HS-30 Filter	16
30066	E-1300-02 Viking Element	30	50183	Aluminum Mounting Adaptor	24	70068	800HS-30 Filter	22
30195	E-10M Centurion Element	27	50185	Aluminum Mounting Adaptor	24	70074	800MG-30 Filter	22
30201	E-1300MG-30 Viking Element	30	50186	Aluminum Mounting Adaptor	24	70075	450HS-10 Filter	20
30202	E-1300MG-10 Viking Element	30	50244	Aluminum Mounting Adaptor	24	70076	450HS-30 Filter	20
30203	E-1300MG-05 Viking Element	30	60001	Pre-Vent Base	34	70077	300WM-144 Filter	18
30204	E-1300MG-03 Viking Element	30	60002	Pre-Vent Lock	34	70080	800WM-144 Filter	22
31011	1 Micron DEF Filter Cartridge	29	60003	Pre-Vent Cap	34	70081	400WM-144 Filter	19
31015	5 Micron DEF Filter Cartridge	29	60035	Tank Sampler Kit	34	70088	250-30 Filter	15
40001	Centurion Single	27	60070	Filter Cup	35	70089	250A-30 Filter	15
40013	Centurion Double	27	60072	Filter Cup, Large	35	70092	475-30 Filter	21
40020	Centurion Triple	27	60074	Diesel Nozzle Shield	35	70094	260-10 Filter	16
40186	Viking 1	30	70003	250-10 Filter	15	70095	260-30 Filter	16
40187	Viking 1F	30	70005	250A-10 Filter	15	70097	475-10 Filter	21
40188	Viking 2	31	70008	400HG-10 Filter	19	70098	475HS-10 Filter	21
40189	Viking 2F	31	70010	300-10 Filter	18	70104	400MG-10 Filter	19
40190	Viking 3F	31	70012	300-30 Filter	18	70105	400MG-02 Filter	19
40191	Viking 4F	31	70015	400-10 Filter	19	70106	400MB-30 Filter	19
40192	Viking B1	33	70016	400-30 Filter	19	70111	475MB-10 Filter	21
40193	Viking B2	33	70018	300MB-30 Filter	18	70117	260MB-10 Filter	16
40194	Viking B3	33	70019	800-10 Filter	22	70120	400MB-10 Filter	19
41060	DEF-TEK Housing	29	70020	800-30 Filter	22	70122	300MB-10 Filter	18
50002	Cast Iron Mounting Adaptor	24	70023	450MB-10 Filter	20	70221	260AMG-02 Filter	17
50003	Cast Iron Mounting Adaptor	24	70024	800HG-10 Filter	22	70223	260AHG-02 Filter	17
50004	Cast Iron Mounting Adaptor	24	70025	300HA-01 Filter	18	70225	260AMG-10 Filter	17
50006	Dual Adaptor	24	70027	450-30 Filter	20	70227	260AHG-10 Filter	17
50011	Dual Adaptor	25	70028	800MG-10 Filter	22	70230	260MG-02 Filter	16
50016N	Nickel Plated C.I. Mounting Adaptor	24	70032	450MG-10 Filter	20	70232	260HG-02 Filter	16
50017N	Nickel Plated C.I. Mounting Adaptor	24	70034	450-10 Filter	20	70234	260MG-10 Filter	16
50026	Aluminum Mounting Adaptor	25	70036	800MG-02 Filter	22	70235	300HG-10 Filter	18
50027	Aluminum Mounting Adaptor	25	70037	800HG-02 Filter	22	70236	260HG-10 Filter	16
50028	Dual Adaptor	25	70039	400HA-01 Filter	19	70580	400HA-20 Filter	19
50032	Aluminum Mounting Adaptor	25	70043	475HS-30 Filter	21	70806	300-02 Filter	18
50032N	Nickel-Plated Aluminum Mounting Adaptor	25	70053	800SL-30 Filter	23	70808	400-02 Filter	19
50109	Aluminum Mounting Adaptor	25	70057	300MG-02 Filter	18	70814	800-02 Filter	22
			70058	300MG-10 Filter	18	70819	250-02 Filter	15

INDEX

PART#	MODEL#	PAGE
70821	250A-02 Filter	15
70898	400HA-10 Filter	19
70991	400HA-05	19
70993	300HA-05 Filter	18
90565	Viking B1 Bag Stand	33
90575	B2 5 Micron Bag Filter	32
90576	B2 10 Micron Bag Filter	32
90577	B2 25 Micron Bag Filter	32
90578	B2 75 Micron Bag Filter	32
90579	B2 150 Micron Bag Filter	32
90580	B2 300 Micron Bag Filter	32
90583	B3 5 Micron Bag Filter	32
90584	B3 10 Micron Bag Filter	32
90585	B3 25 Micron Bag Filter	32
90586	B3 75 Micron Bag Filter	32
90587	B3 150 Micron Bag Filter	32
90588	B3 300 Micron Bag Filter	32
90591	B1 5 Micron Bag Filter	32
90592	B1 10 Micron Bag Filter	32
90593	B1 25 Micron Bag Filter	32
90594	B1 75 Micron Bag Filter	32
90595	B1 150 Micron Bag Filter	32
90596	B1 300 Micron Bag Filter	32
90601	Differential Pressure Gauge	30
90602	Differential Pressure Gauge	30
90603	Differential Pressure Gauge	30



VITON IS A REGISTERED TRADEMARK OF DU PONT DE NEMOURS & COMPANY CORPORATION.

© 2024 CENTRAL ILLINOIS MANUFACTURING COMPANY. ALL RIGHTS RESERVED.
CENTRAL ILLINOIS MANUFACTURING COMPANY RESERVES THE RIGHT TO CHANGE OR
DISCONTINUE ANY MODEL OR SPECIFICATION AT ANY TIME AND WITHOUT NOTICE.

PRINTED IN THE USA.



A REGISTERED ISO 9001:2015 COMPANY

📍 201 N. CHAMPAIGN ST. BEMENT, IL 61813

☎ 217.693.6555

☎ CUSTOMER SERVICE: 844.447.7663

📠 FAX: 217.693.6673

✉ info@cim-tek.com

🌐 www.cim-tek.com

#P-C01
12.20.23 Rev. A